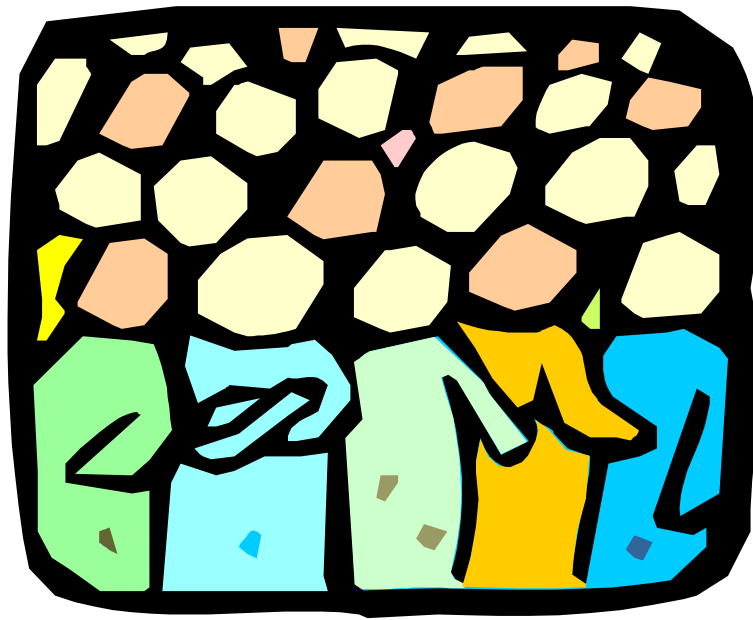


City of Richmond 2000 Census Data Report #12



1990 - 2000 Poverty Statistics by Census Tract



Prepared by
Department of Community Development
Division of Comprehensive Planning
October 2002

Introduction

Between 1990 and 2000, the City of Richmond experienced overall declines in number of households, number of families and total population. As noted in previous *City of Richmond 2000 Census Data* reports, these demographic shifts impacted individual neighborhoods across the City differently. Accordingly, the fluctuations also affected the number of households, families and persons living in poverty. This report highlights the changes occurring in poverty-related statistics at the census tract-level from 1990 to 2000.

It is important for users of the data to note that the information contained in this report is based upon Summary File 3, the long-form questionnaire-based, sample dataset, the Census Bureau compiled following the 2000 enumeration. Therefore, the totals for households, families and population do not necessarily match those provided in previous *City of Richmond 2000 Census Data* reports (based upon Summary File 1, the short-form questionnaire-based, 100% count dataset). Summary File 3 data is utilized for this report as detailed statistics including income, poverty, employment and education, amongst others, are only contained within the sample dataset.

Citywide Trends

While the number of persons and households in poverty in the City of Richmond increased between 1990 and 2000, the number of families in poverty decreased. Declines in the total number of *persons for whom poverty status is determined* (simply referred to as population in this report; see Census Glossary for definition) over the course of the decade intensified the effect of the increase on the City, as the percentage of persons in poverty as a portion of the population increased from 20.9% in 1990 to 21.4% in 2000. Although, as shown in Table 1, the African-American and White populations in poverty actually

Table 1. Change in number of families and persons in poverty by race from 1990-2000

In poverty	1990	2000	Change	Percent Change
Persons	40,103	40,185	+82	+0.2%
African-American	31,250	29,907	-1,343	-4.3%
White	8,398	7,746	-652	-7.8%
Asian/Pacific Islander ¹	293	688	+395	+134.8%
Other ²	162	1,114	+952	+587.7%
2 or more races ³	N/A	730	N/A	N/A
Families	8,239	7,568	-671	-8.1%
African-American	7,223	6,522	-701	-9.7%
White	955	702	-253	-26.5%
Asian/Pacific Islander ¹	44	84	+40	+90.9%
Other ²	17	158	+141	+829.4%
2 or more races ³	N/A	102	N/A	N/A

decreased in number from 1990. Similar to the population trend, the number of families within the City declined from 1990 to 2000, but the number of families in

poverty also decreased, and at a faster rate. Decreases in the number of African-American and White families in poverty lead the overall decline.

Persons in Poverty

As evident in many urban areas, the distribution of persons in poverty in Richmond was not uniform across census tracts (see Figure 1 on page 4). Certain census tracts carried a higher proportion of persons in poverty in 2000; some experienced a greater increase in the number of residents in poverty over the course of the decade, although those census tracts that experienced an increase of persons in poverty from 1990 were not necessarily those with the highest poverty numbers in 2000.

In fact, a number of census tracts, although containing some of the largest numbers of residents in poverty in 2000, actually experienced significant declines in the total number of persons in poverty. For example, Census Tract 301, which includes the Gilpin neighborhood, had the highest percentage of persons in poverty in 2000 (see Table 2), but the number of persons in poverty declined from 1990. A portion of this change is probably attributable to an overall decrease in population, but the population in poverty actually outpaced the overall decrease in population, falling by 21.5% from 1990. Encouragingly, Census Tract 202 (Creighton, Fairfield and portions of the Woodville neighborhood), while maintaining one of the higher poverty rates in the City, experienced a decline of nearly 10% in the poverty rate from 1990.

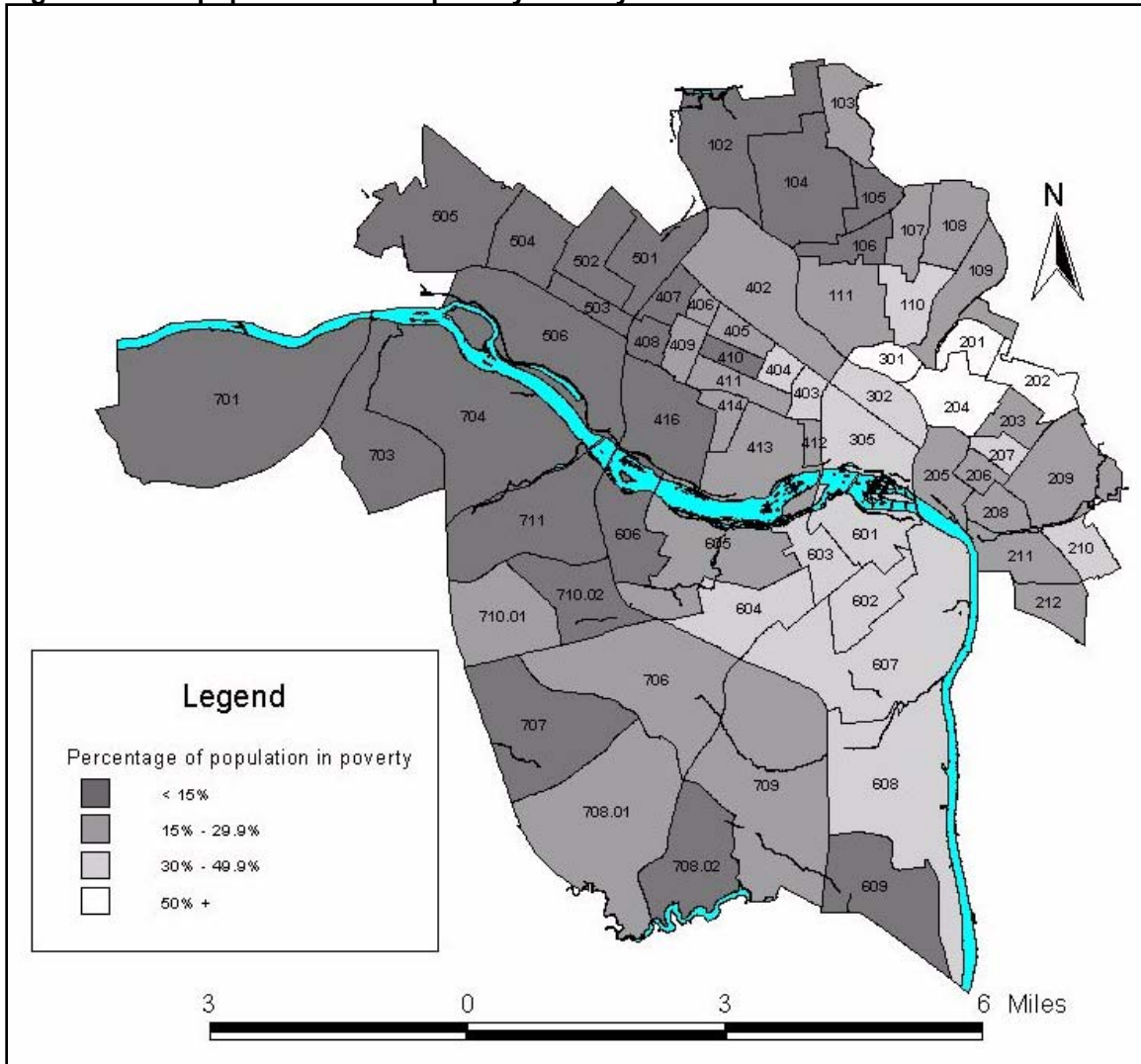
Table 2. Percentage of population (POP) in poverty in 2000

Census Tract	POP in poverty	Census Tract	POP in poverty	Census Tract	POP in poverty	Census Tract	POP in poverty	Census Tract	POP in poverty
102	7.5%	204	52.1%	403	35.6%	501	7.5%	608	32.8%
103	24.9%	205	26.4%	404	40.6%	502	2.3%	609	12.6%
104	13.8%	206	26.0%	405	17.9%	503	3.5%	701	1.2%
105	6.5%	207	40.8%	406	18.6%	504	2.3%	703	4.0%
106	14.2%	208	27.2%	407	9.4%	505	4.7%	704	3.4%
107	21.8%	209	27.7%	408	8.6%	506	1.2%	706	22.4%
108	23.1%	210	34.3%	409	19.6%	601	35.1%	707	13.2%
109	28.8%	211	25.0%	410	11.6%	602	33.9%	708.01	18.0%
110	31.5%	212	22.7%	411	23.6%	603	38.7%	708.02	6.8%
111	21.4%	301	72.5%	412	16.4%	604	32.9%	709	22.2%
201	54.4%	302	31.4%	413	24.3%	605	15.7%	710.01	16.7%
202	53.5%	305	36.6%	414	23.2%	606	5.2%	710.02	12.9%
203	21.3%	402	27.9%	416	8.6%	607	34.1%	711	7.6%

Other census tracts, with significantly lower overall levels of poverty than those mentioned above, also experienced declines in the number of persons living in poverty. Census Tract 601, which weathered a nearly 70% decline in total population due primarily to the demolition and relocation activities associated with the HOPE VI redevelopment project in Blackwell, experienced an 86.7% reduction in the number of persons living in poverty. The overall poverty rate for the population fell from 80.1% of all persons in 1990 to 35.1% in 2000. The ratio of market-rate to subsidized housing to be built in the redeveloped

Blackwell community will undoubtedly play a significant role in the poverty rate within Census Tract 601 in the future.

Figure 1. 2000 population⁴ below poverty level by census tract



Households and Families in Poverty

While the number of families in poverty decreased Citywide from 1990 to 2000, the bulk of the change was concentrated in a few census tracts. Of the 32 census tracts recording a reduction in the number of families living below the poverty level, only 6 experienced considerable change. Three of which were noted in the previous section (Census Tracts 202, 301 and 601). Combined, Census Tracts 201 and 209 accounted for a reduction of over 300 families in poverty. In Census Tract 710.01, the demolition of the Jefferson Village apartment complex certainly contributed to the 65.8% reduction in the number of families in poverty. Table 3, located on the following page, highlights the percentage of households and families in poverty in 2000 in each census tract.

Table 3. Percentage of households (HH) and families (FAM) in poverty in 2000

Census Tract	HH in poverty	FAM in poverty	Census Tract	HH in poverty	FAM in poverty	Census Tract	HH in poverty	FAM in poverty
102	9.6%	4.2%	301	68.4%	71.5%	506	2.2%	1.0%
103	19.4%	23.9%	302	27.4%	31.0%	601	39.7%	24.4%
104	12.8%	10.6%	305	28.8%	24.8%	602	27.1%	32.3%
105	6.3%	5.4%	402	25.5%	18.4%	603	30.2%	28.9%
106	13.4%	11.2%	403	40.5%	10.7%	604	28.6%	31.8%
107	17.6%	15.5%	404	42.4%	7.4%	605	15.4%	12.5%
108	23.2%	18.9%	405	17.6%	4.9%	606	4.7%	1.9%
109	33.0%	23.9%	406	17.1%	2.9%	607	37.4%	33.2%
110	23.1%	26.3%	407	10.4%	5.9%	608	29.9%	29.9%
111	19.0%	13.3%	408	10.8%	2.4%	609	14.8%	11.5%
201	49.7%	47.8%	409	18.9%	10.8%	701	1.8%	0.0%
202	49.5%	48.7%	410	10.4%	2.5%	703	3.4%	1.7%
203	20.1%	14.2%	411	25.8%	17.8%	704	2.7%	1.7%
204	50.2%	46.2%	412	13.5%	10.3%	706	19.0%	19.3%
205	21.4%	26.3%	413	25.9%	21.1%	707	13.9%	10.8%
206	22.0%	12.6%	414	18.7%	19.1%	708.01	16.9%	14.9%
207	50.2%	43.2%	416	10.4%	7.2%	708.02	8.9%	4.6%
208	25.1%	25.3%	501	4.5%	0.0%	709	18.1%	19.5%
209	30.1%	21.4%	502	1.8%	0.0%	710.01	17.1%	13.5%
210	32.0%	34.7%	503	3.4%	2.4%	710.02	15.9%	10.7%
211	18.2%	20.5%	504	3.6%	0.7%	711	6.2%	7.8%
212	17.0%	20.8%	505	4.2%	1.6%	N/A	N/A	N/A

Overall, the number of households in poverty in the City increased from 1990 to 2000; therefore, the decrease in the number of families in poverty (a subset of households) mentioned previously was bettered by an increase in the number of non-family households in poverty. While examining household poverty data it is important to remember that the counts are based solely upon the relationship of the individual householder to the threshold criteria and do not consider the presence or income of other unrelated persons that may cohabitate a particular housing unit. In order to accurately report any household or non-family poverty data, one must fully examine the complete demographic character of the area. For example, upon initial review, it appears that the income levels of residents in Census Tracts 305, 404, 405 and 411 did not keep pace with the national economy (each experienced significant increases in the number of non-family households in poverty); although, upon closer examination it is revealed that these census tracts, located in close proximity of Virginia Commonwealth University, may have been impacted by an influx of off-campus students without significant regular income, not by households considered to be impoverished in the traditional sense.

Conclusion

The review of overall trends in population and households does not necessarily provide a reliable measurement of the manner in which poverty may be increasing or decreasing. More important to accurately assessing changes in poverty is examination of the range of activities occurring in individual census tracts. These activities, such as demolitions or shifts in student population for example, which cause significant changes at the census tract-level, have the potential to greatly impact Citywide poverty-related statistics.

Appendix A. Poverty status by census tract

Census Tract	Citywide	102	103 ⁵	104 ⁵	105	106	107 ⁵	108	109
1990 Total households	85,268	2,320	579	3,094	638	900	1,099	1,545	1,195
Family Households	47,322	925	398	1,494	460	537	814	1,189	849
Below poverty level	8,239	42	54	69	10	39	107	149	135
Married couples	1,540	8	0	8	5	18	29	40	48
with related children under 18	813	8	0	0	0	18	15	21	28
Other Families	6,699	34	54	61	5	21	78	109	87
Male Householder, No Spouse Present	275	0	0	17	0	0	12	7	7
with related children under 18	198	0	0	9	0	0	12	7	0
Female Householder, No Spouse Present	6,424	34	54	44	5	21	66	102	80
with related children under 18	5,762	34	40	36	0	12	59	98	58
Non-Family Households	37,946	1,395	181	1,600	178	363	285	356	346
Below poverty level	7,423	97	55	159	20	60	61	91	189
1990 Population⁴	191,992	3,817	1,507	6,118	1,727	2,195	2,993	4,727	3,603
Below poverty level	40,103	242	269	401	44	271	511	785	798
Less than 18 years of age	14,819	62	81	63	0	62	199	322	230
18 to 64 years of age	20,490	124	140	289	37	152	227	377	349
65+ years of age	4,794	56	48	49	7	57	85	86	219
2000 Total Households	84,566	2,111	633	3,051	662	923	1,045	1,580	1,076
Family Households	44,225	831	418	1,421	447	545	722	1,075	679
Below poverty level	7,568	35	100	151	24	61	112	203	162
Married Couples	1,173	0	6	33	17	8	27	29	16
with related children under 18	674	0	6	17	5	0	27	10	7
Other Families	6,395	35	94	118	7	53	85	174	146
Male Householder, No Spouse Present	591	0	23	0	0	7	18	24	25
with related children under 18	417	0	16	0	0	7	18	24	19
Female Householder, No Spouse Present	5,804	35	71	118	7	46	67	150	121
with related children under 18	5,231	9	71	108	7	30	60	146	108
Non-Family Households	40,341	1,280	215	1,630	215	378	323	505	397
Below poverty level	8,765	167	23	240	18	63	72	163	193
2000 Population⁴	188,116	3,719	1,611	6,158	1,722	2,246	2,784	4,389	3,179
Below poverty level	40,185	279	401	852	112	320	607	1,013	916
Less than 18 years of age	14,040	7	194	211	38	70	260	398	299
18 to 64 years of age	22,107	176	183	539	49	189	282	452	483
65+ years of age	4,038	96	24	102	25	61	65	163	134
1990-2000 Change in Total Households	-702	-209	54	-43	24	23	-54	35	-119
Family Households	-3,097	-94	20	-73	-13	8	-92	-114	-170
Below poverty level	-671	-7	46	82	14	22	5	54	27
Married Couples	-367	-8	6	25	12	-10	-2	-11	-32
with related children under 18	-139	-8	6	17	5	-18	12	-11	-21
Other Families	-304	1	40	57	2	32	7	65	59
Male Householder, No Spouse Present	316	0	23	-17	0	7	6	17	18
with related children under 18	219	0	16	-9	0	7	6	17	19
Female Householder, No Spouse Present	-620	1	17	74	2	25	1	48	41
with related children under 18	-531	-25	31	72	7	18	1	48	50
Non-Family Households	2,395	-115	34	30	37	15	38	149	51
Below poverty level	1,342	70	-32	81	-2	3	11	72	4
1990-2000 Change in Population⁴	-3,876	-98	104	40	-5	51	-209	-338	-424
Below poverty level	82	37	132	451	68	49	96	228	118
Less than 18 years of age	-779	-55	113	148	38	8	61	76	69
18 to 64 years of age	1,617	52	43	250	12	37	55	75	134
65+ years of age	-756	40	-24	53	18	4	-20	77	-85

Data provided by U.S. Census Bureau (1990 STF3 and 2000 SF3)

Appendix A. Poverty status by census tract

Census Tract	110⁵	111	201	202	203	204	205	206	207	208
1990 Total households	1,152	1,192	665	1,612	723	1,559	766	602	681	803
Family Households	783	734	563	1,216	510	1,081	391	327	300	445
Below poverty level	221	89	351	721	98	413	68	69	83	92
Married couples	22	13	33	52	40	57	11	28	30	0
with related children under 18	16	5	27	10	14	49	11	18	0	0
Other Families	199	76	318	669	58	356	57	41	53	92
Male Householder, No Spouse Present	0	7	4	0	14	8	8	6	8	6
with related children under 18	0	7	4	0	9	8	0	6	8	6
Female Householder, No Spouse Present	199	69	314	669	44	348	49	35	45	86
with related children under 18	195	52	285	640	23	326	30	29	37	47
Non-Family Households	369	458	102	396	213	478	375	275	381	358
Below poverty level	66	90	35	196	69	212	99	77	239	150
1990 Population⁴	3,164	2,852	1,984	4,222	1,951	4,135	1,761	1,527	1,434	1,795
Below poverty level	1,019	498	1,233	2,636	477	1,900	394	399	562	500
Less than 18 years of age	502	182	681	1,457	68	984	125	130	75	82
18 to 64 years of age	448	271	500	1,037	319	735	221	213	267	308
65+ years of age	69	45	52	142	90	181	48	56	220	110
2000 Total Households	1,007	1,084	594	1,575	730	1,428	1,146	769	582	726
Family Households	737	618	454	1,177	466	957	407	285	301	364
Below poverty level	194	82	217	573	66	442	107	36	130	92
Married Couples	12	14	17	31	12	35	16	0	6	23
with related children under 18	12	14	17	31	5	28	11	0	0	5
Other Families	182	68	200	542	54	407	91	36	124	69
Male Householder, No Spouse Present	23	0	0	8	4	34	0	0	52	18
with related children under 18	16	0	0	0	4	21	0	0	31	18
Female Householder, No Spouse Present	159	68	200	534	50	373	91	36	72	51
with related children under 18	146	58	185	483	36	349	86	30	49	36
Non-Family Households	270	466	140	398	264	471	739	484	281	362
Below poverty level	39	124	78	207	81	275	138	133	162	90
2000 Population⁴	2,923	2,497	1,617	4,314	1,823	3,867	2,072	1,538	1,288	1,830
Below poverty level	920	534	879	2,307	388	2,015	547	400	525	497
Less than 18 years of age	452	178	490	1,266	125	1,052	172	108	108	164
18 to 64 years of age	416	264	353	922	189	810	324	249	236	285
65+ years of age	52	92	36	119	74	153	51	43	181	48
1990-2000 Change in Total Households	-145	-108	-71	-37	7	-131	380	167	-99	-77
Family Households	-46	-116	-109	-39	-44	-124	16	-42	1	-81
Below poverty level	-27	-7	-134	-148	-32	29	39	-33	47	0
Married Couples	-10	1	-16	-21	-28	-22	5	-28	-24	23
with related children under 18	-4	9	-10	21	-9	-21	0	-18	0	5
Other Families	-17	-8	-118	-127	-4	51	34	-5	71	-23
Male Householder, No Spouse Present	23	-7	-4	8	-10	26	-8	-6	44	12
with related children under 18	16	-7	-4	0	-5	13	0	-6	23	12
Female Householder, No Spouse Present	-40	-1	-114	-135	6	25	42	1	27	-35
with related children under 18	-49	6	-100	-157	13	23	56	1	12	-11
Non-Family Households	-99	8	38	2	51	-7	364	209	-100	4
Below poverty level	-27	34	43	11	12	63	39	56	-77	-60
1990-2000 Change in Population⁴	-241	-355	-367	92	-128	-268	311	11	-146	35
Below poverty level	-99	36	-354	-329	-89	115	153	1	-37	-3
Less than 18 years of age	-50	-4	-191	-191	57	68	47	-22	33	82
18 to 64 years of age	-32	-7	-147	-115	-130	75	103	36	-31	-23
65+ years of age	-17	47	-16	-23	-16	-28	3	-13	-39	-62

Data provided by U.S. Census Bureau (1990 STF3 and 2000 SF3)

Appendix A. Poverty status by census tract

Census Tract	209	210	211	212	301	302 ⁶	305 ⁶	402 ⁶	403	404
1990 Total households	1,256	692	377	585	1,232	663	892	670	369	2,114
Family Households	826	394	244	476	751	233	98	304	73	359
Below poverty level	329	172	43	81	607	36	5	61	19	27
Married couples	53	9	17	37	41	8	0	6	6	14
with related children under 18	22	0	6	23	35	8	0	0	0	0
Other Families	276	163	26	44	566	28	5	55	13	13
Male Householder, No Spouse Present	22	8	0	8	0	6	0	0	0	0
with related children under 18	17	8	0	8	0	0	0	0	0	0
Female Householder, No Spouse Present	254	155	26	36	566	22	5	55	13	13
with related children under 18	224	155	26	30	515	8	0	32	13	0
Non-Family Households	430	298	133	109	481	430	794	366	296	1,755
Below poverty level	172	90	27	18	329	156	126	78	156	660
1990 Population⁴	3,163	1,674	1,015	1,604	3,104	1,334	1,366	1,503	741	3,755
Below poverty level	1,226	705	217	257	2,514	377	326	325	385	1,416
Less than 18 years of age	458	349	103	80	1,303	33	0	65	55	0
18 to 64 years of age	560	320	79	147	973	239	294	183	330	1,341
65+ years of age	208	36	35	30	238	105	32	77	0	75
2000 Total Households	1,225	603	477	619	1,138	552	1,188	568	326	2,146
Family Households	737	409	361	408	664	168	157	283	56	391
Below poverty level	158	142	74	85	475	52	39	52	6	29
Married Couples	8	15	8	8	13	5	14	16	0	0
with related children under 18	0	8	0	0	13	0	0	0	0	0
Other Families	150	127	66	77	462	47	25	36	6	29
Male Householder, No Spouse Present	23	14	0	15	57	10	0	0	0	15
with related children under 18	23	14	0	15	50	0	0	0	0	15
Female Householder, No Spouse Present	127	113	66	62	405	37	25	36	6	14
with related children under 18	97	105	61	62	383	37	20	24	6	4
Non-Family Households	488	194	116	211	474	384	1,031	285	270	1,755
Below poverty level	211	51	13	20	303	99	303	93	126	881
2000 Population⁴	2,837	1,572	1,439	1,552	2,724	1,098	2,363	1,472	579	3,871
Below poverty level	786	539	360	352	1,974	345	865	411	206	1,570
Less than 18 years of age	253	286	162	184	1,039	67	18	105	9	20
18 to 64 years of age	382	233	155	154	807	238	796	251	188	1,371
65+ years of age	151	20	43	14	128	40	51	55	9	179
1990-2000 Change in Total Households	-31	-89	100	34	-94	-111	296	-102	-43	32
Family Households	-89	15	117	-68	-87	-65	59	-21	-17	32
Below poverty level	-171	-30	31	4	-132	16	34	-9	-13	2
Married Couples	-45	6	-9	-29	-28	-3	14	10	-6	-14
with related children under 18	-22	8	-6	-23	-22	-8	0	0	0	0
Other Families	-126	-36	40	33	-104	19	20	-19	-7	16
Male Householder, No Spouse Present	1	6	0	7	57	4	0	0	0	15
with related children under 18	6	6	0	7	50	0	0	0	0	15
Female Householder, No Spouse Present	-127	-42	40	26	-161	15	20	-19	-7	1
with related children under 18	-127	-50	35	32	-132	29	20	-8	-7	4
Non-Family Households	58	-104	-17	102	-7	-46	237	-81	-26	0
Below poverty level	39	-39	-14	2	-26	-57	177	15	-30	221
1990-2000 Change in Population⁴	-326	-102	424	-52	-380	-236	997	-31	-162	116
Below poverty level	-440	-166	143	95	-540	-32	539	86	-179	154
Less than 18 years of age	-205	-63	59	104	-264	34	18	40	-46	20
18 to 64 years of age	-178	-87	76	7	-166	-1	502	68	-142	30
65+ years of age	-57	-16	8	-16	-110	-65	19	-22	9	104

Data provided by U.S. Census Bureau (1990 STF3 and 2000 SF3)

Appendix A. Poverty status by census tract

Census Tract	405	406	407	408	409	410	411	412 ⁵	413 ⁶	414
1990 Total households	1,849	1,076	1,386	834	1,451	1,478	1,692	375	1,256	1,030
Family Households	450	205	408	283	471	435	569	202	761	626
Below poverty level	40	23	38	21	41	12	112	57	114	88
Married couples	10	7	17	15	7	9	37	7	25	35
with related children under 18	0	7	0	0	0	9	0	7	0	8
Other Families	30	16	21	6	34	3	75	50	89	53
Male Householder, No Spouse Present	0	16	0	6	0	0	12	0	7	8
with related children under 18	0	7	0	0	0	0	12	0	7	8
Female Householder, No Spouse Present	30	0	21	0	34	3	63	50	82	45
with related children under 18	9	0	21	0	27	0	53	43	71	45
Non-Family Households	1,399	871	978	551	980	1,043	1,123	173	495	404
Below poverty level	148	128	90	50	157	159	255	44	167	114
1990 Population⁴	3,210	1,764	2,359	1,425	2,700	2,611	3,493	850	2,842	2,446
Below poverty level	539	309	251	138	420	420	821	237	503	403
Less than 18 years of age	35	13	26	0	55	14	117	83	116	121
18 to 64 years of age	486	281	181	83	292	396	569	140	217	170
65+ years of age	18	15	44	55	73	10	135	14	170	112
2000 Total Households	1,873	1,015	1,472	809	1,389	1,525	1,693	415	1,256	990
Family Households	466	175	323	252	389	481	495	146	776	544
Below poverty level	23	5	19	6	42	12	88	15	164	104
Married Couples	9	0	6	6	10	0	11	4	58	20
with related children under 18	0	0	0	0	0	0	0	0	31	5
Other Families	14	5	13	0	32	12	77	11	106	84
Male Householder, No Spouse Present	0	0	0	0	2	0	16	0	0	0
with related children under 18	0	0	0	0	2	0	0	0	0	0
Female Householder, No Spouse Present	14	5	13	0	30	12	61	11	106	84
with related children under 18	0	0	13	0	24	12	41	11	94	79
Non-Family Households	1,407	840	1,149	557	1,000	1,044	1,198	269	480	446
Below poverty level	306	169	134	81	220	146	348	41	161	81
2000 Population⁴	3,302	1,648	2,396	1,332	2,487	2,695	3,328	812	2,905	2,414
Below poverty level	590	306	226	114	487	312	787	133	705	559
Less than 18 years of age	0	0	10	0	48	21	62	11	235	204
18 to 64 years of age	548	293	166	97	388	291	616	122	295	305
65+ years of age	42	13	50	17	51	0	109	0	175	50
1990-2000 Change in Total Households	24	-61	86	-25	-62	47	1	40	0	-40
Family Households	16	-30	-85	-31	-82	46	-74	-56	15	-82
Below poverty level	-17	-18	-19	-15	1	0	-24	-42	50	16
Married Couples	-1	-7	-11	-9	3	-9	-26	-3	33	-15
with related children under 18	0	-7	0	0	0	-9	0	-7	31	-3
Other Families	-16	-11	-8	-6	-2	9	2	-39	17	31
Male Householder, No Spouse Present	0	-16	0	-6	2	0	4	0	-7	-8
with related children under 18	0	-7	0	0	2	0	-12	0	-7	-8
Female Householder, No Spouse Present	-16	5	-8	0	-4	9	-2	-39	24	39
with related children under 18	-9	0	-8	0	-3	12	-12	-32	23	34
Non-Family Households	8	-31	171	6	20	1	75	96	-15	42
Below poverty level	158	41	44	31	63	-13	93	-3	-6	-33
1990-2000 Change in Population⁴	92	-116	37	-93	-213	84	-165	-38	63	-32
Below poverty level	51	-3	-25	-24	67	-108	-34	-104	202	156
Less than 18 years of age	-35	-13	-16	0	-7	7	-55	-72	119	83
18 to 64 years of age	62	12	-15	14	96	-105	47	-18	78	135
65+ years of age	24	-2	6	-38	-22	-10	-26	-14	5	-62

Data provided by U.S. Census Bureau (1990 STF3 and 2000 SF3)

Appendix A. Poverty status by census tract

Census Tract	416	501	502 ⁶	503	504	505 ⁶	506	601 ⁵	602	603 ⁵
1990 Total households	609	1,376	1,575	685	1,244	1,346	822	453	1,047	684
Family Households	423	586	831	238	823	785	619	359	683	328
Below poverty level	23	19	21	9	0	0	6	272	178	165
Married couples	13	6	12	9	0	0	6	14	39	30
with related children under 18	0	0	0	9	0	0	6	14	31	8
Other Families	10	13	9	0	0	0	0	258	139	135
Male Householder, No Spouse Present	6	5	0	0	0	0	0	0	0	7
with related children under 18	6	0	0	0	0	0	0	0	0	0
Female Householder, No Spouse Present	4	8	9	0	0	0	0	258	139	128
with related children under 18	0	8	9	0	0	0	0	238	131	123
Non-Family Households	186	790	744	447	421	561	203	94	364	356
Below poverty level	27	47	25	33	43	30	10	67	102	90
1990 Population⁴	1,484	2,321	2,997	1,103	2,743	2,830	2,111	1,586	2,811	1,680
Below poverty level	113	113	73	69	55	42	51	1,270	800	839
Less than 18 years of age	15	9	5	16	12	0	6	700	365	347
18 to 64 years of age	46	74	19	38	18	35	23	520	373	391
65+ years of age	52	30	49	15	25	7	22	50	62	101
2000 Total Households	635	1,429	1,594	799	1,182	1,325	848	156	757	777
Family Households	391	565	737	255	733	728	672	82	551	266
Below poverty level	28	0	0	6	5	12	7	20	178	77
Married Couples	0	0	0	0	5	0	7	10	48	13
with related children under 18	0	0	0	0	5	0	0	10	18	13
Other Families	28	0	0	6	0	12	0	10	130	64
Male Householder, No Spouse Present	6	0	0	0	0	7	0	0	7	0
with related children under 18	0	0	0	0	0	0	0	0	0	0
Female Householder, No Spouse Present	22	0	0	6	0	5	0	10	123	64
with related children under 18	22	0	0	6	0	5	0	10	104	51
Non-Family Households	244	864	857	544	449	597	176	74	206	511
Below poverty level	38	64	28	21	37	44	12	42	27	158
2000 Population⁴	1,454	2,545	2,997	1,225	2,752	2,782	2,186	481	2,122	1,521
Below poverty level	125	191	69	43	64	131	26	169	719	588
Less than 18 years of age	41	82	0	6	5	11	0	69	281	187
18 to 64 years of age	47	100	69	29	51	101	20	81	339	327
65+ years of age	37	9	0	8	8	19	6	19	99	74
1990-2000 Change in Total Households	26	53	19	114	-62	-21	26	-297	-290	93
Family Households	-32	-21	-94	17	-90	-57	53	-277	-132	-62
Below poverty level	5	-19	-21	-3	5	12	1	-252	0	-88
Married Couples	-13	-6	-12	-9	5	0	1	-4	9	-17
with related children under 18	0	0	0	-9	5	0	-6	-4	-13	5
Other Families	18	-13	-9	6	0	12	0	-248	-9	-71
Male Householder, No Spouse Present	0	-5	0	0	0	7	0	0	7	-7
with related children under 18	-6	0	0	0	0	0	0	0	0	0
Female Householder, No Spouse Present	18	-8	-9	6	0	5	0	-248	-16	-64
with related children under 18	22	-8	-9	6	0	5	0	-228	-27	-72
Non-Family Households	58	74	113	97	28	36	-27	-20	-158	155
Below poverty level	11	17	3	-12	-6	14	2	-25	-75	68
1990-2000 Change in Population⁴	-30	224	0	122	9	-48	75	-1,105	-689	-159
Below poverty level	12	78	-4	-26	9	89	-25	-1,101	-81	-251
Less than 18 years of age	26	73	-5	-10	-7	11	-6	-631	-84	-160
18 to 64 years of age	1	26	50	-9	33	66	-3	-439	-34	-64
65+ years of age	-15	-21	-49	-7	-17	12	-16	-31	37	-27

Data provided by U.S. Census Bureau (1990 STF3 and 2000 SF3)

Appendix A. Poverty status by census tract

Census Tract	604	605⁵	606⁵	607	608	609	701	703⁶	704	706
1990 Total households	2,065	2,775	1,210	1,956	1,891	518	1,843	1,312	1,858	2,901
Family Households	1,414	1,338	764	1,450	1,297	333	1,378	837	1,306	1,763
Below poverty level	332	125	37	543	320	9	15	16	32	177
Married couples	104	51	14	63	80	0	9	8	13	27
with related children under 18	63	21	6	40	80	0	0	0	0	20
Other Families	228	74	23	480	240	9	6	8	19	150
Male Householder, No Spouse Present	0	14	0	0	9	0	0	0	0	8
with related children under 18	0	14	0	0	9	0	0	0	0	8
Female Householder, No Spouse Present	228	60	23	480	231	9	6	8	19	142
with related children under 18	185	50	16	451	218	9	0	4	19	129
Non-Family Households	651	1,437	446	506	594	185	465	475	552	1,138
Below poverty level	136	174	61	154	161	49	22	30	30	220
1990 Population⁴	5,538	5,495	2,515	5,435	4,909	1,127	4,292	2,819	4,070	6,702
Below poverty level	1,362	659	197	2,111	1,453	118	84	127	114	823
Less than 18 years of age	584	184	68	1,109	640	20	7	27	26	263
18 to 64 years of age	635	336	68	895	705	81	38	88	59	436
65+ years of age	143	139	61	107	108	17	39	12	29	124
2000 Total Households	2,046	2,951	1,128	1,898	1,304	534	2,032	1,480	1,861	3,096
Family Households	1,341	1,427	648	1,379	843	321	1,304	866	1,103	1,940
Below poverty level	426	178	12	458	252	37	0	15	19	375
Married Couples	76	65	5	58	31	5	0	4	12	109
with related children under 18	40	34	5	25	25	0	0	4	6	65
Other Families	350	113	7	400	221	32	0	11	7	266
Male Householder, No Spouse Present	5	13	7	15	16	0	0	0	0	54
with related children under 18	0	0	7	15	12	0	0	0	0	45
Female Householder, No Spouse Present	345	100	0	385	205	32	0	11	7	212
with related children under 18	328	79	0	338	200	32	0	11	4	204
Non-Family Households	705	1,524	480	519	461	213	728	614	758	1,156
Below poverty level	160	277	41	251	138	42	37	35	32	214
2000 Population⁴	5,440	6,025	2,442	5,151	3,401	1,298	4,224	3,151	3,844	7,729
Below poverty level	1,791	944	127	1,756	1,114	163	52	126	132	1,734
Less than 18 years of age	813	240	23	763	573	64	0	31	29	639
18 to 64 years of age	807	591	92	877	485	90	52	84	92	973
65+ years of age	171	113	12	116	56	9	0	11	11	122
1990-2000 Change in Total Households	-19	176	-82	-58	-587	16	189	168	3	195
Family Households	-73	89	-116	-71	-454	-12	-74	29	-203	177
Below poverty level	94	53	-25	-85	-68	28	-15	-1	-13	198
Married Couples	-28	14	-9	-5	-49	5	-9	-4	-1	82
with related children under 18	-23	13	-1	-15	-55	0	0	4	6	45
Other Families	122	39	-16	-80	-19	23	-6	3	-12	116
Male Householder, No Spouse Present	5	-1	7	15	7	0	0	0	0	46
with related children under 18	0	-14	7	15	3	0	0	0	0	37
Female Householder, No Spouse Present	117	40	-23	-95	-26	23	-6	3	-12	70
with related children under 18	143	29	-16	-113	-18	23	0	7	-15	75
Non-Family Households	54	87	34	13	-133	28	263	139	206	18
Below poverty level	24	103	-20	97	-23	-7	15	5	2	-6
1990-2000 Change in Population⁴	-98	530	-73	-284	-1,508	171	-68	332	-226	1,027
Below poverty level	429	285	-70	-355	-339	45	-32	-1	18	911
Less than 18 years of age	229	56	-45	-346	-67	44	-7	4	3	376
18 to 64 years of age	172	255	24	-18	-220	9	14	-4	33	537
65+ years of age	28	-26	-49	9	-52	-8	-39	-1	-18	-2

Appendix A. Poverty status by census tract

Census Tract	707	708.01 ⁷	708.02 ⁷	709	710.01 ⁸	710.02 ⁸	711
1990 Total households	1,930	2,526	892	2,605	2,812	1,450	2,481
Family Households	1,303	1,657	660	1,652	1,266	856	1,189
Below poverty level	117	258	37	220	421	127	24
Married couples	36	67	24	45	18	30	20
with related children under 18	36	41	18	21	0	14	20
Other Families	81	191	13	175	403	97	4
Male Householder, No Spouse Present	0	0	0	10	19	0	0
with related children under 18	0	0	0	10	8	0	0
Female Householder, No Spouse Present	81	191	13	165	384	97	4
with related children under 18	81	183	13	159	384	75	4
Non-Family Households	627	869	232	953	1,546	594	1,292
Below poverty level	144	149	24	77	196	191	42
1990 Population⁴	4,770	6,087	2,351	6,366	5,459	3,223	4,697
Below poverty level	542	965	207	870	1,502	630	186
Less than 18 years of age	209	412	78	422	703	202	59
18 to 64 years of age	241	455	108	428	691	280	114
65+ years of age	92	98	21	20	108	148	13
2000 Total Households	2,003	2,623	976	2,630	2,495	1,453	2,553
Family Households	1,377	1,789	646	1,634	1,066	775	1,201
Below poverty level	149	267	30	319	144	83	94
Married Couples	9	44	30	88	35	6	0
with related children under 18	9	44	7	77	35	0	0
Other Families	140	223	0	231	109	77	94
Male Householder, No Spouse Present	10	20	0	28	0	5	10
with related children under 18	10	20	0	0	0	5	10
Female Householder, No Spouse Present	130	203	0	203	109	72	84
with related children under 18	121	191	0	203	109	59	84
Non-Family Households	626	834	330	996	1,429	678	1,352
Below poverty level	129	176	57	157	283	148	64
2000 Population⁴	4,798	6,710	2,411	6,405	4,778	3,033	4,808
Below poverty level	631	1,208	165	1,424	798	391	365
Less than 18 years of age	218	524	12	618	236	97	152
18 to 64 years of age	370	664	105	777	428	177	182
65+ years of age	43	20	48	29	134	117	31
1990-2000 Change in Total Households	73	97	84	25	-317	3	72
Family Households	74	132	-14	-18	-200	-81	12
Below poverty level	32	9	-7	99	-277	-44	70
Married Couples	-27	-23	6	43	17	-24	-20
with related children under 18	-27	3	-11	56	35	-14	-20
Other Families	59	32	-13	56	-294	-20	90
Male Householder, No Spouse Present	10	20	0	18	-19	5	10
with related children under 18	10	20	0	-10	-8	5	10
Female Householder, No Spouse Present	49	12	-13	38	-275	-25	80
with related children under 18	40	8	-13	44	-275	-16	80
Non-Family Households	-1	-35	98	43	-117	84	60
Below poverty level	-15	27	33	80	87	-43	22
1990-2000 Change in Population⁴	28	623	60	39	-681	-190	111
Below poverty level	89	243	-42	554	-704	-239	179
Less than 18 years of age	9	112	-66	196	-467	-105	93
18 to 64 years of age	129	209	-3	349	-263	-103	68
65+ years of age	-49	-78	27	9	26	-31	18

Data provided by U.S. Census Bureau (1990 STF3 and 2000 SF3)

Endnotes

¹ “Asian and Pacific Islander” was a combined category for 1990 Census reporting. These race types were reported separately in the 2000 Census, but the categories were merged in this report for comparison purposes.

² The 1990 figures include responses categorized under “Other race” and “American Indian, Eskimo or Aleut.” The 2000 figures include responses categorized under “Some other race” and “American Indian and Alaska Native.”

³ “Two or more races” was not a reporting option for the 1990 Census.

⁴ Population includes only those *persons for whom poverty status is determined*.

⁵ Changes in boundary of census tract occurred between 1990 and 2000. Change involved geography smaller than block group level; therefore, figures were not adjusted. The unadjusted 1990 census tract totals impact the accuracy of the 1990-2000 change figures.

⁶ Changes in boundary of census tract occurred between 1990 and 2000. Entire census tracts merged together; therefore, the 1990 totals were combined.

⁷ Changes in boundary of Census Tract 708 occurred between 1990 and 2000. Tract split by block group into 2000 Census Tracts 708.01 and 708.02. Entire block groups combined with a partial block group (partial block group data assigned to new census tracts using block-level population and number of household totals from Summary Tape File 1) to produce new 1990 census tract totals.

⁸ Changes in boundary of Census Tract 710.98 occurred between 1990 and 2000. Tract split by block group into 2000 Census Tracts 710.01 and 710.02. Combined block group totals used for new 1990 census tract totals.

CENSUS GLOSSARY*

Family

A family includes a householder and one or more people living in the same household who are related to the householder by birth, marriage, or adoption.

Household

A household includes all of the people who occupy a housing unit. People not living in households are classified as living in group quarters.

Non-family household

A non-family household includes a householder living alone or living with unrelated individuals.

Persons for whom poverty status is determined

Poverty status is determined for all individuals except those who are institutionalized, living in military group quarters or college dormitories or those unrelated individuals under the age of 15.

Poverty status

Poverty is measured by using 48 income thresholds (available on the U.S. Census Bureau's website, www.census.gov/hhes/poverty/threshld.html) that vary by family size and number of children within the family and age of the householder. To determine whether a person is poor, one compares the total income of that person's family with the threshold appropriate for that family. If the total family income is less than the threshold, then the person is considered poor, together with every member of his or her family. Not every person is included in the poverty universe.

* Definitions adapted from *Census 2000 Summary File 3 Technical Documentation*, prepared by U.S. Census Bureau, 2002.