

## CSO02 - Orleans

### Rainfall and Overflow Model Summary

**Current Month: July 2011**

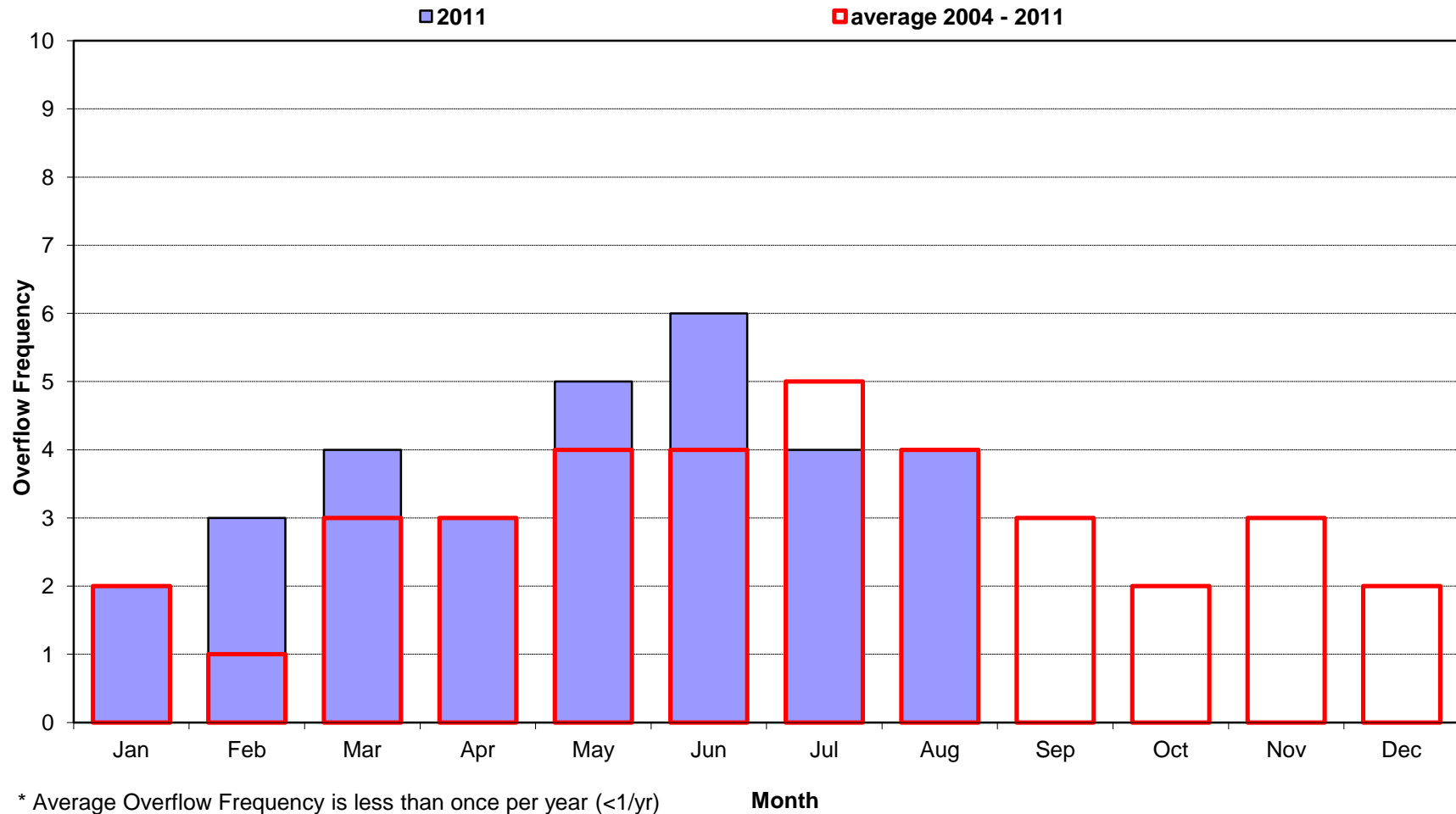
Date	Num of Overflows	Storm <sup>(1)</sup> Total (in.)	Hours of Rainfall	Maximum Storm Intensity (in./hr.)	Volume of Overflow (MG)	Duration of Overflow (hrs.)
7/1/11						
7/2/11						
7/3/11		0.18	2	0.17	none	none
7/4/11	2	0.93	4	0.78	0.19	3
7/5/11						
7/6/11		0.31	5	0.12	none	none
7/7/11						
7/8/11	1	1.73	11	0.66	0.31	7
7/9/11						
7/10/11						
7/11/11						
7/12/11						
7/13/11		0.01	1	0.01	none	none
7/14/11						
7/15/11						
7/16/11						
7/17/11						
7/18/11						
7/19/11						
7/20/11						
7/21/11						
7/22/11						
7/23/11		0.03	2	0.02	none	none
7/24/11						
7/25/11	1	0.41	5	0.21	0.02	2
7/26/11						
7/27/11						
7/28/11						
7/29/11						
7/30/11						
7/31/11		0.03	1	0.03	none	none

#### MONTH SUMMARY

Num of Overflows	Total Rain	Total Hours	Max Intensity	Total Volume	Total Duration
4	3.63	31	0.78	0.52	12

(1) Storm Total (in) data from National Weather Service, Wakefield Office, Richmond International Airport.

City of Richmond, Virginia  
Overflow Frequency by Month  
CSO02 - Orleans 2004-2011



\* Average Overflow Frequency is less than once per year (<1/yr)

**CSO03 - Nicholson**

**Rainfall and Overflow Model Summary**

**Current Month: July 2011**

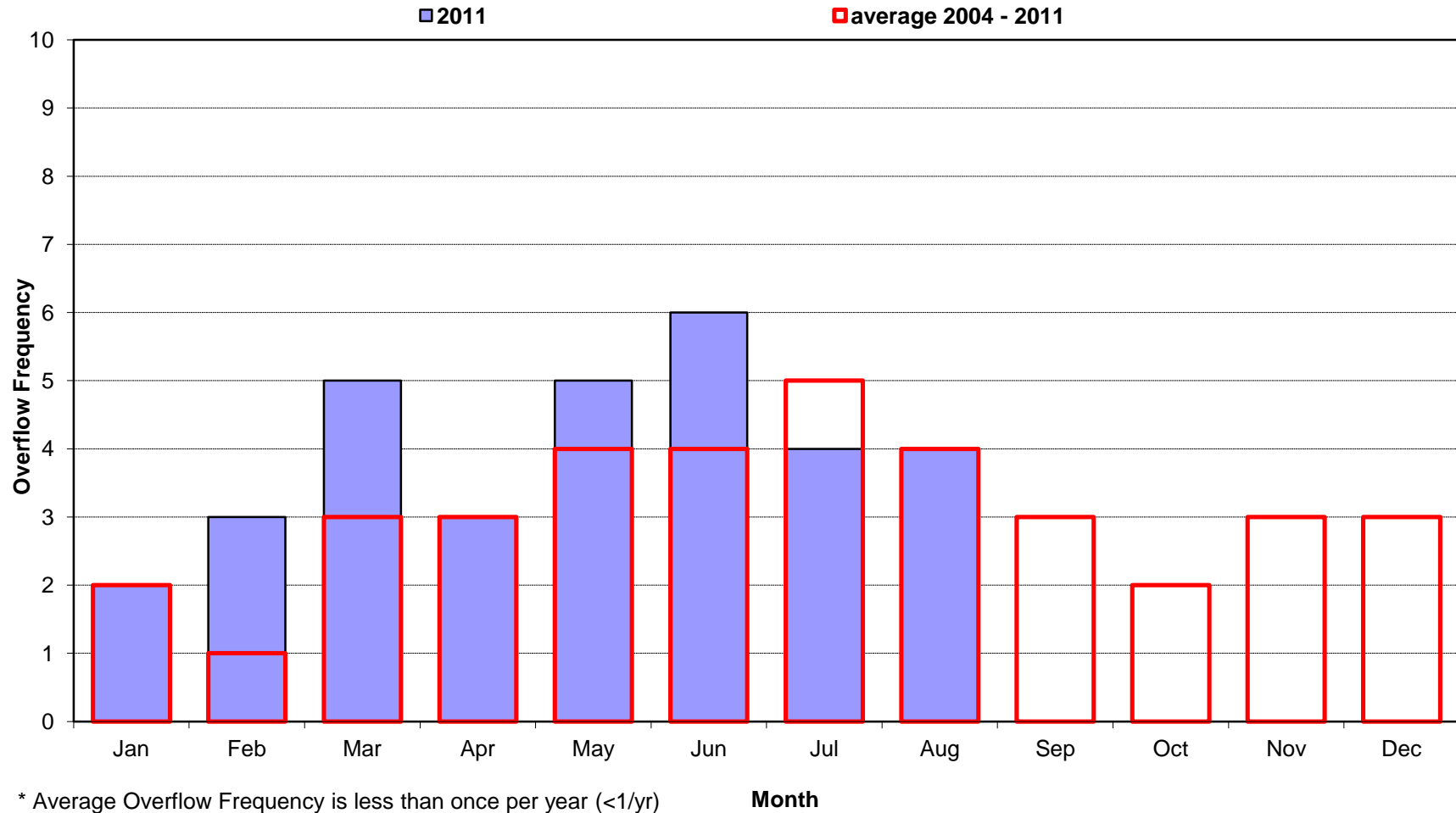
Date	Num of Overflows	Storm <sup>(1)</sup> Total (in.)	Hours of Rainfall	Maximum Storm Intensity (in./hr.)	Volume of Overflow (MG)	Duration of Overflow (hrs.)
7/1/11						
7/2/11						
7/3/11		0.18	2	0.17	none	none
7/4/11	2	0.93	4	0.78	0.15	3
7/5/11						
7/6/11		0.31	5	0.12	none	none
7/7/11						
7/8/11	1	1.73	11	0.66	0.24	8
7/9/11						
7/10/11						
7/11/11						
7/12/11						
7/13/11		0.01	1	0.01	none	none
7/14/11						
7/15/11						
7/16/11						
7/17/11						
7/18/11						
7/19/11						
7/20/11						
7/21/11						
7/22/11						
7/23/11		0.03	2	0.02	none	none
7/24/11						
7/25/11	1	0.41	5	0.21	0.01	2
7/26/11						
7/27/11						
7/28/11						
7/29/11						
7/30/11						
7/31/11		0.03	1	0.03	none	none

**MONTH SUMMARY**

Num of Overflows	Total Rain	Total Hours	Max Intensity	Total Volume	Total Duration
4	3.63	31	0.78	0.40	13

(1) Storm Total (in) data from National Weather Service, Wakefield Office, Richmond International Airport.

City of Richmond, Virginia  
Overflow Frequency by Month  
CSO03 - Nicholson 2004-2011



**CSO04 - Bloody Run**  
**Rainfall and Overflow Model Summary**  
**Current Month: July 2011**

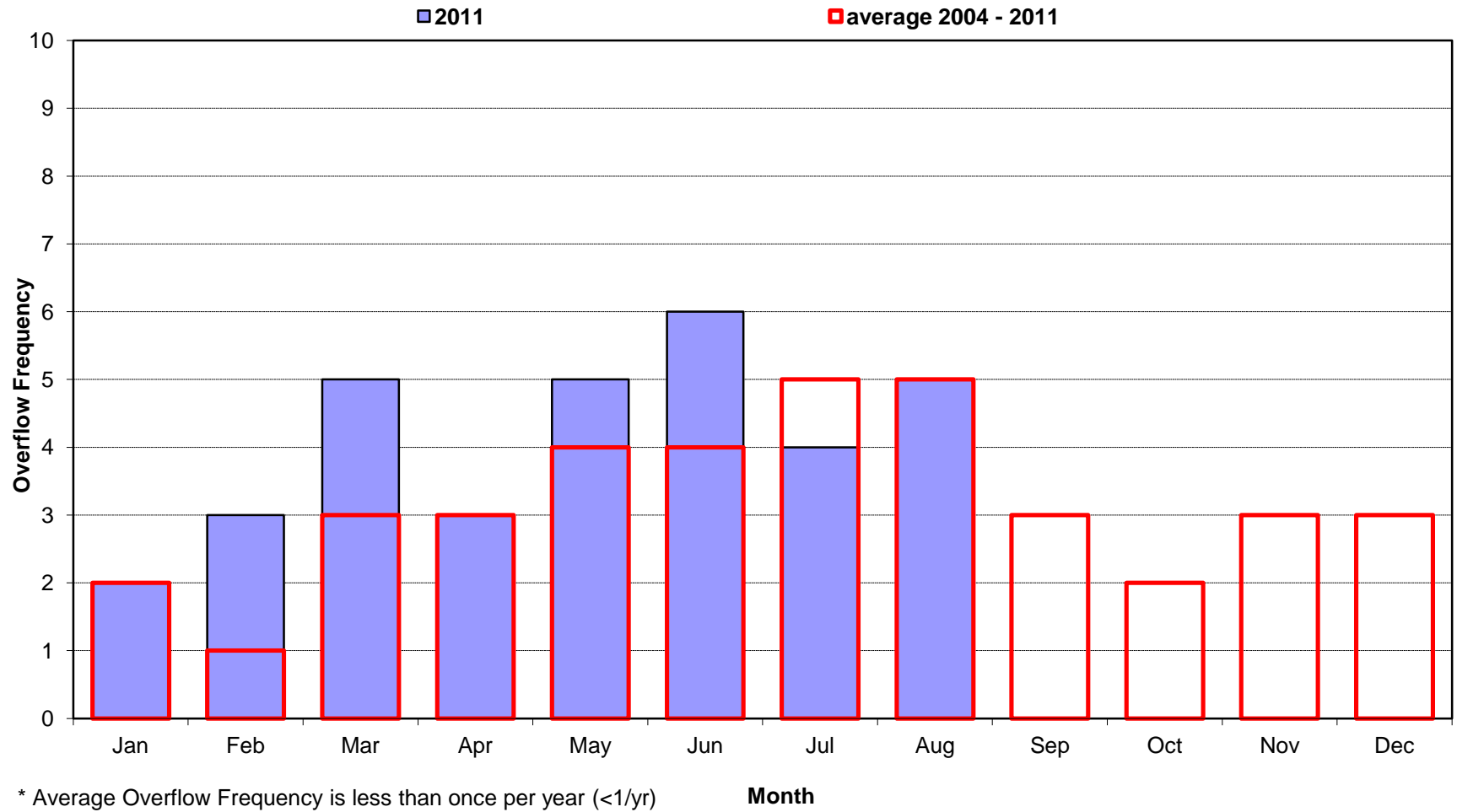
Date	Num of Overflows	Storm <sup>(1)</sup> Total (in.)	Hours of Rainfall	Maximum Storm Intensity (in./hr.)	Volume of Overflow (MG)	Duration of Overflow (hrs.)
7/1/11						
7/2/11						
7/3/11		0.18	2	0.17	none	none
7/4/11	2	0.93	4	0.78	0.70	4
7/5/11						
7/6/11		0.31	5	0.12	none	none
7/7/11						
7/8/11	1	1.73	11	0.66	1.10	9
7/9/11						
7/10/11						
7/11/11						
7/12/11						
7/13/11		0.01	1	0.01	none	none
7/14/11						
7/15/11						
7/16/11						
7/17/11						
7/18/11						
7/19/11						
7/20/11						
7/21/11						
7/22/11						
7/23/11		0.03	2	0.02	none	none
7/24/11						
7/25/11	1	0.41	5	0.21	0.07	4
7/26/11						
7/27/11						
7/28/11						
7/29/11						
7/30/11						
7/31/11		0.03	1	0.03	none	none

**MONTH SUMMARY**

Num of Overflows	Total Rain	Total Hours	Max Intensity	Total Volume	Total Duration
4	3.63	31	0.78	1.87	17

(1) Storm Total (in) data from National Weather Service, Wakefield Office, Richmond International Airport.

City of Richmond, Virginia  
Overflow Frequency by Month  
CS004 - Bloody Run 2004-2011



\* Average Overflow Frequency is less than once per year (<1/yr)

**CSO05 - Peach Street**  
**Rainfall and Overflow Model Summary**  
**Current Month: July 2011**

Date	Num of Overflows	Storm <sup>(1)</sup> Total (in.)	Hours of Rainfall	Maximum Storm Intensity (in./hr.)	Volume of Overflow (MG)	Duration of Overflow (hrs.)
7/1/11						
7/2/11						
7/3/11		0.18	2	0.17	none	none
7/4/11		0.93	4	0.78	none	none
7/5/11						
7/6/11		0.31	5	0.12	none	none
7/7/11						
7/8/11		1.73	11	0.66	none	none
7/9/11						
7/10/11						
7/11/11						
7/12/11						
7/13/11		0.01	1	0.01	none	none
7/14/11						
7/15/11						
7/16/11						
7/17/11						
7/18/11						
7/19/11						
7/20/11						
7/21/11						
7/22/11						
7/23/11		0.03	2	0.02	none	none
7/24/11						
7/25/11		0.41	5	0.21	none	none
7/26/11						
7/27/11						
7/28/11						
7/29/11						
7/30/11						
7/31/11		0.03	1	0.03	none	none

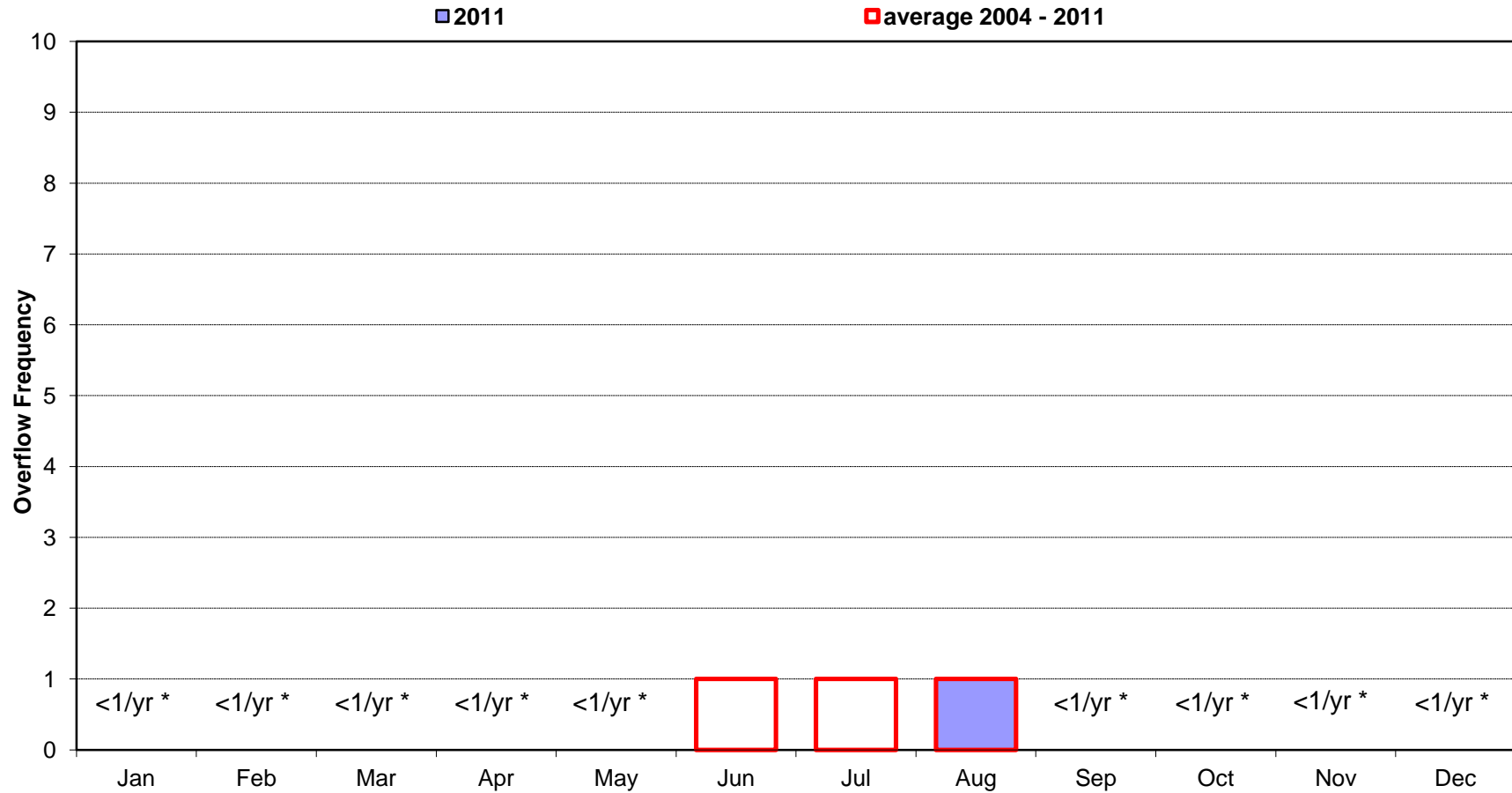
**MONTH SUMMARY**

Num of Overflows	Total Rain	Total Hours	Max Intensity	Total Volume	Total Duration
	3.63	31	0.78		

(1) Storm Total (in) data from National Weather Service, Wakefield Office, Richmond International Airport.

City of Richmond, Virginia  
Overflow Frequency by Month

CSO05 - Peach Street 2004-2011



\* Average Overflow Frequency is less than once per year (<1/yr)

Month

**CSO06 - Shockoe**

**Rainfall and Overflow Model Summary**

**Current Month: July 2011**

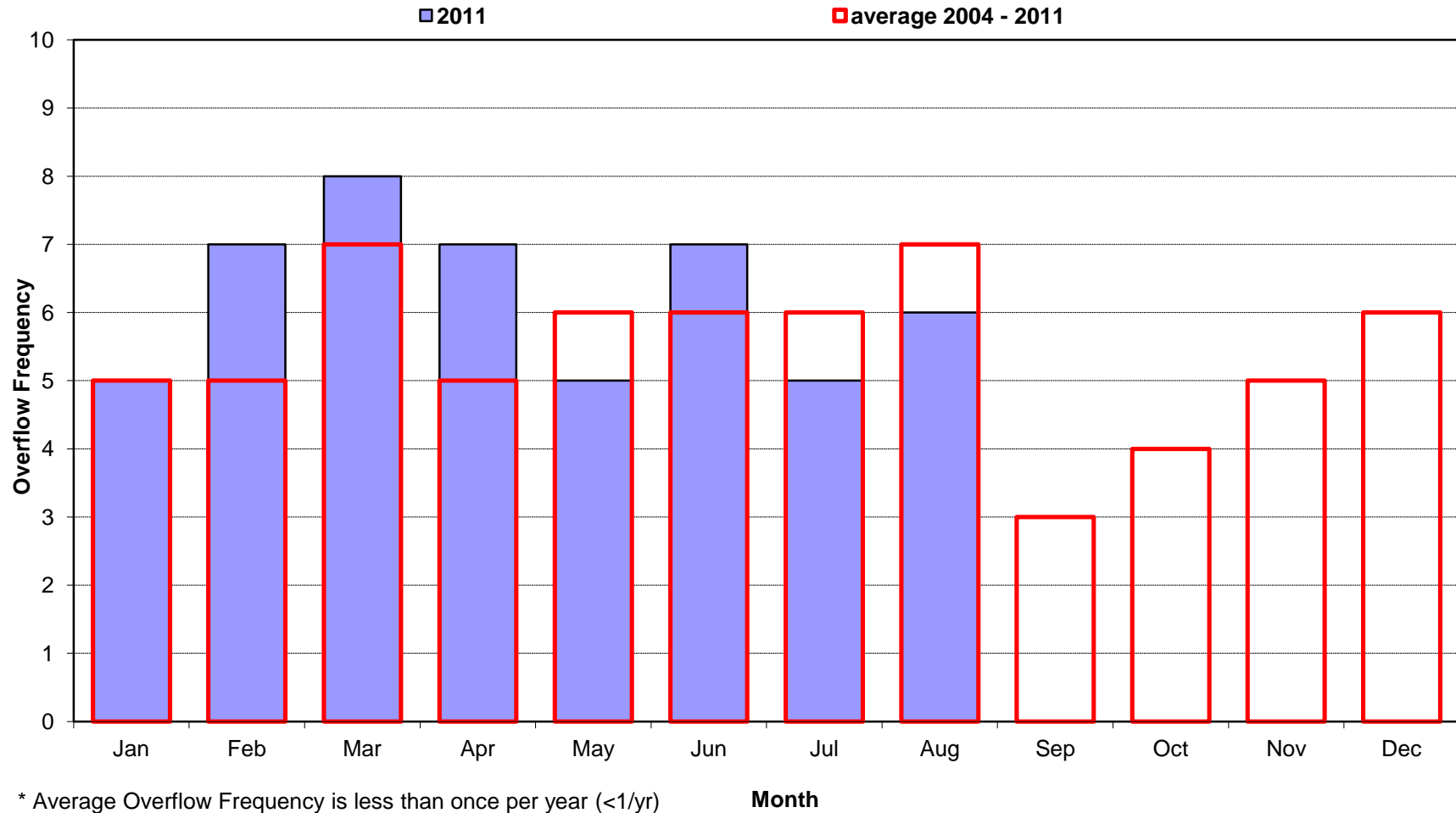
Date	Num of Overflows	Storm <sup>(1)</sup> Total (in.)	Hours of Rainfall	Maximum Storm Intensity (in./hr.)	Volume of Overflow (MG)	Duration of Overflow (hrs.)
7/1/11						
7/2/11						
7/3/11		0.18	2	0.17	none	none
7/4/11	2	0.93	4	0.78	26.57	9
7/5/11						
7/6/11	1	0.31	5	0.12	0.50	5
7/7/11						
7/8/11	1	1.73	11	0.66	100.49	13
7/9/11						
7/10/11						
7/11/11						
7/12/11						
7/13/11		0.01	1	0.01	none	none
7/14/11						
7/15/11						
7/16/11						
7/17/11						
7/18/11						
7/19/11						
7/20/11						
7/21/11						
7/22/11						
7/23/11		0.03	2	0.02	none	none
7/24/11						
7/25/11	1	0.41	5	0.21	0.64	6
7/26/11						
7/27/11						
7/28/11						
7/29/11						
7/30/11						
7/31/11		0.03	1	0.03	none	none

**MONTH SUMMARY**

Num of Overflows	Total Rain	Total Hours	Max Intensity	Total Volume	Total Duration
5	3.63	31	0.78	128.20	33

(1) Storm Total (in) data from National Weather Service, Wakefield Office, Richmond International Airport.

City of Richmond, Virginia  
Overflow Frequency by Month  
CSO06 - Shockoe 2004-2011



## CSO07 - Byrd

### Rainfall and Overflow Model Summary

**Current Month: July 2011**

Date	Num of Overflows	Storm <sup>(1)</sup> Total (in.)	Hours of Rainfall	Maximum Storm Intensity (in./hr.)	Volume of Overflow (MG)	Duration of Overflow (hrs.)
7/1/11						
7/2/11						
7/3/11		0.18	2	0.17	none	none
7/4/11		0.93	4	0.78	none	none
7/5/11						
7/6/11		0.31	5	0.12	none	none
7/7/11						
7/8/11		1.73	11	0.66	none	none
7/9/11						
7/10/11						
7/11/11						
7/12/11						
7/13/11		0.01	1	0.01	none	none
7/14/11						
7/15/11						
7/16/11						
7/17/11						
7/18/11						
7/19/11						
7/20/11						
7/21/11						
7/22/11						
7/23/11		0.03	2	0.02	none	none
7/24/11						
7/25/11		0.41	5	0.21	none	none
7/26/11						
7/27/11						
7/28/11						
7/29/11						
7/30/11						
7/31/11		0.03	1	0.03	none	none

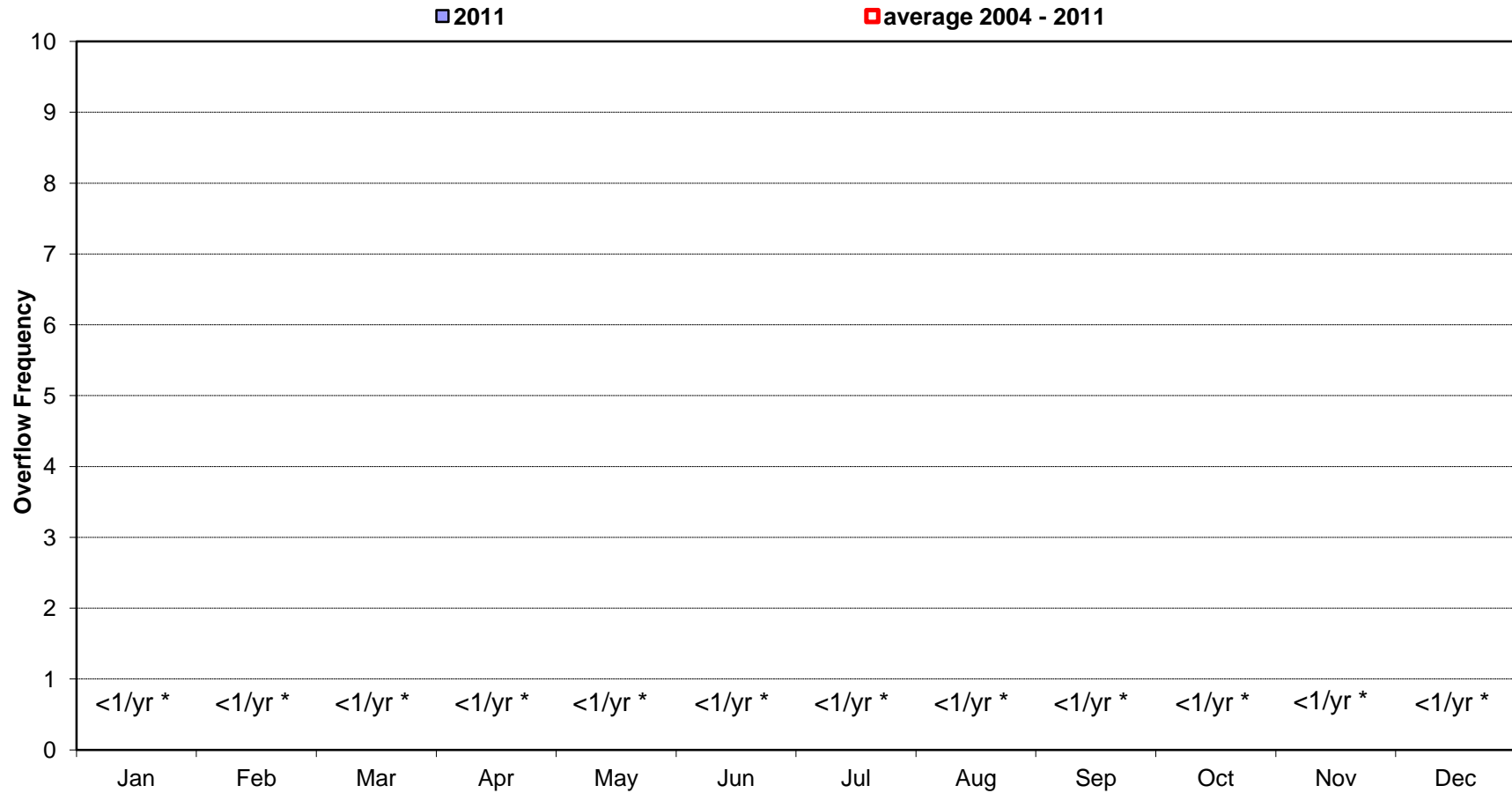
#### MONTH SUMMARY

Num of Overflows	Total Rain	Total Hours	Max Intensity	Total Volume	Total Duration
	3.63	31	0.78		

(1) Storm Total (in) data from National Weather Service, Wakefield Office, Richmond International Airport.

City of Richmond, Virginia  
Overflow Frequency by Month

CSO07 - Byrd 2004-2011



\* Average Overflow Frequency is less than once per year (<1/yr)

Month

## CSO08 - 6th Street

### Rainfall and Overflow Model Summary

**Current Month: July 2011**

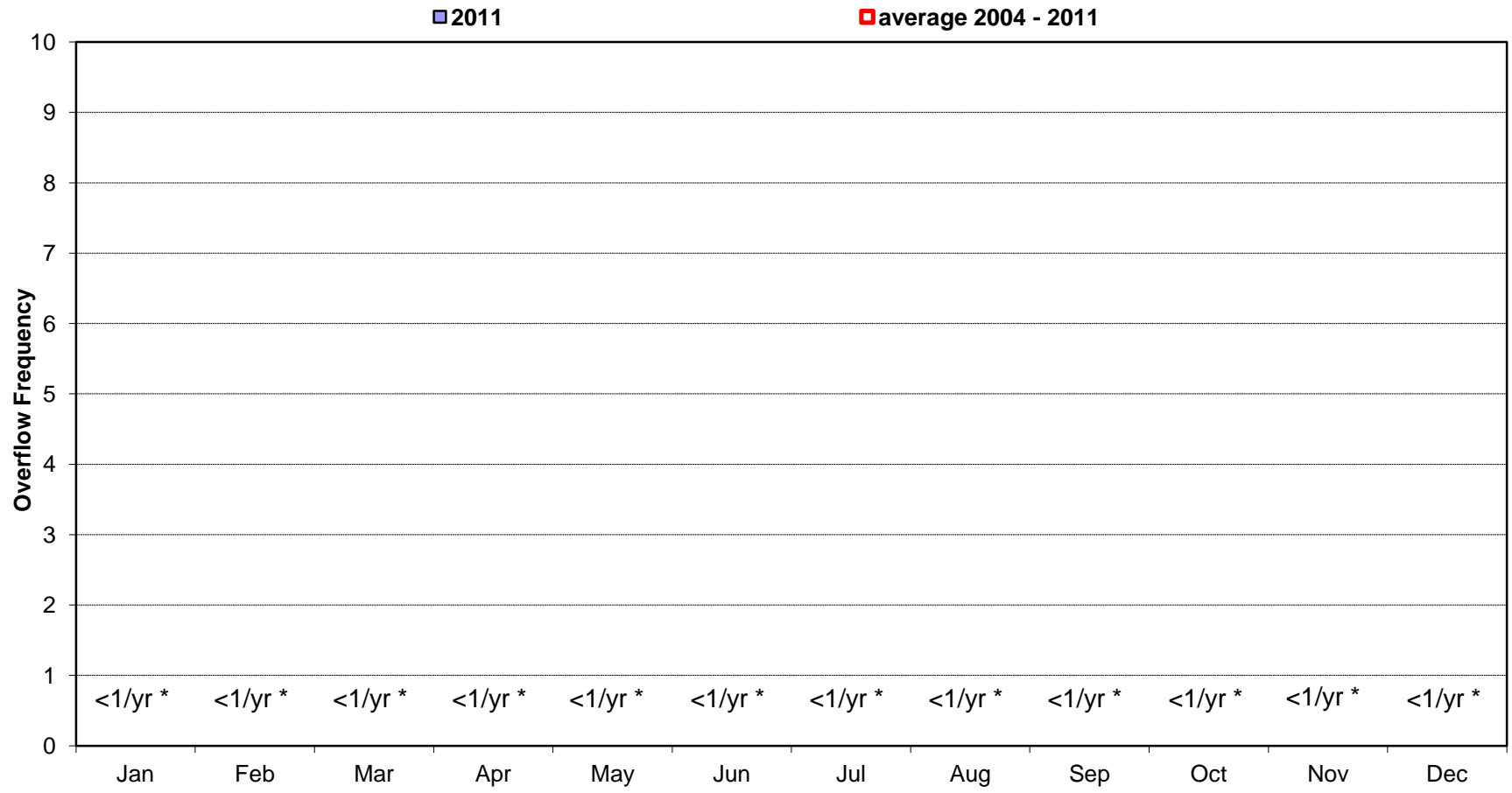
Date	Num of Overflows	Storm <sup>(1)</sup> Total (in.)	Hours of Rainfall	Maximum Storm Intensity (in./hr.)	Volume of Overflow (MG)	Duration of Overflow (hrs.)
7/1/11						
7/2/11						
7/3/11		0.18	2	0.17	none	none
7/4/11		0.93	4	0.78	none	none
7/5/11						
7/6/11		0.31	5	0.12	none	none
7/7/11						
7/8/11		1.73	11	0.66	none	none
7/9/11						
7/10/11						
7/11/11						
7/12/11						
7/13/11		0.01	1	0.01	none	none
7/14/11						
7/15/11						
7/16/11						
7/17/11						
7/18/11						
7/19/11						
7/20/11						
7/21/11						
7/22/11						
7/23/11		0.03	2	0.02	none	none
7/24/11						
7/25/11		0.41	5	0.21	none	none
7/26/11						
7/27/11						
7/28/11						
7/29/11						
7/30/11						
7/31/11		0.03	1	0.03	none	none

**MONTH SUMMARY**

Num of Overflows	Total Rain	Total Hours	Max Intensity	Total Volume	Total Duration
	3.63	31	0.78		

(1) Storm Total (in) data from National Weather Service, Wakefield Office, Richmond International Airport.

City of Richmond, Virginia  
Overflow Frequency by Month  
CSO08 - 6th Street 2004-2011



\* Average Overflow Frequency is less than once per year (<1/yr)

Month

**CSO09 - 7th Street**  
**Rainfall and Overflow Model Summary**  
**Current Month: July 2011**

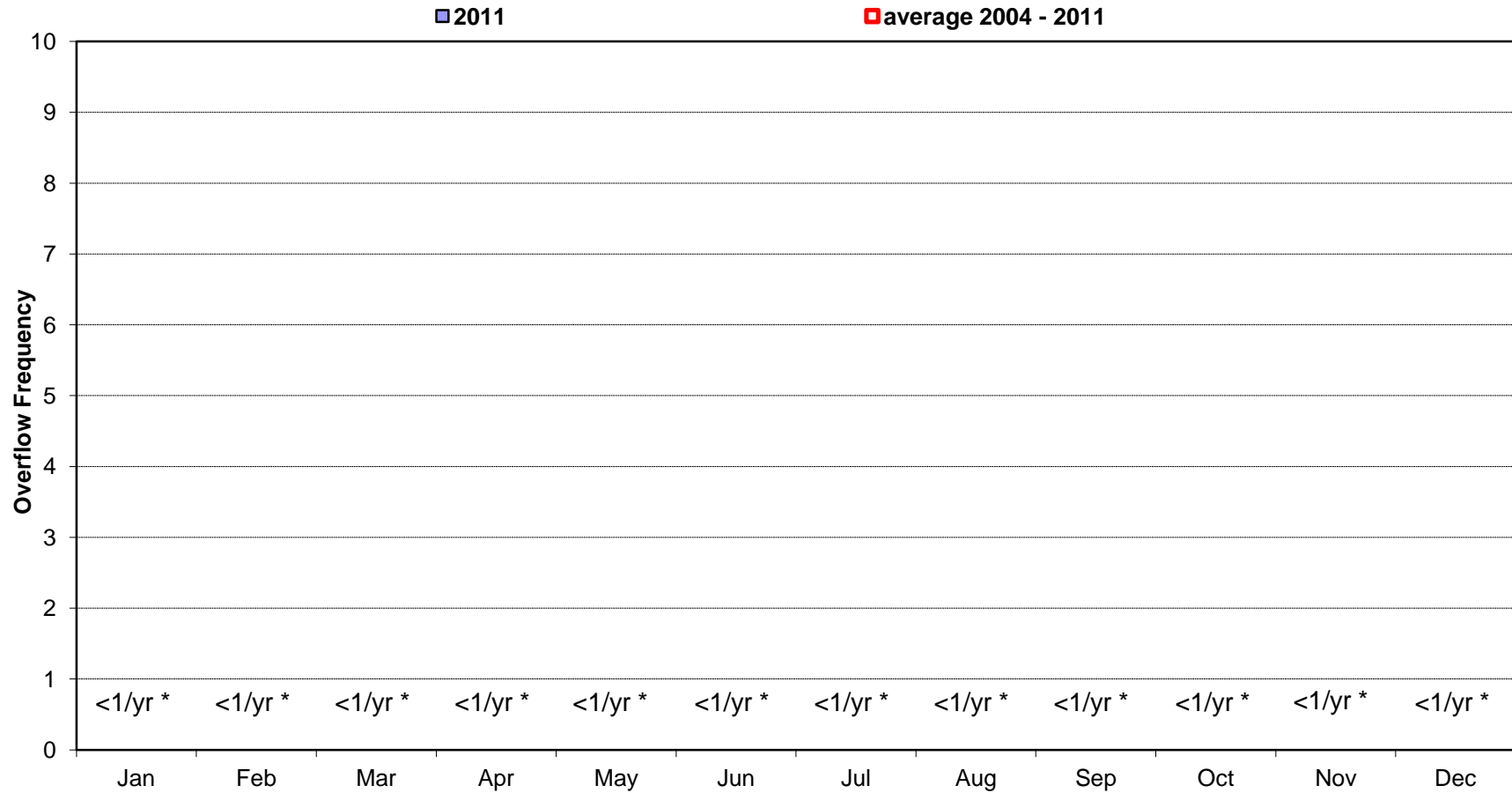
Date	Num of Overflows	Storm <sup>(1)</sup> Total (in.)	Hours of Rainfall	Maximum Storm Intensity (in./hr.)	Volume of Overflow (MG)	Duration of Overflow (hrs.)
7/1/11						
7/2/11						
7/3/11		0.18	2	0.17	none	none
7/4/11		0.93	4	0.78	none	none
7/5/11						
7/6/11		0.31	5	0.12	none	none
7/7/11						
7/8/11		1.73	11	0.66	none	none
7/9/11						
7/10/11						
7/11/11						
7/12/11						
7/13/11		0.01	1	0.01	none	none
7/14/11						
7/15/11						
7/16/11						
7/17/11						
7/18/11						
7/19/11						
7/20/11						
7/21/11						
7/22/11						
7/23/11		0.03	2	0.02	none	none
7/24/11						
7/25/11		0.41	5	0.21	none	none
7/26/11						
7/27/11						
7/28/11						
7/29/11						
7/30/11						
7/31/11		0.03	1	0.03	none	none

**MONTH SUMMARY**

Num of Overflows	Total Rain	Total Hours	Max Intensity	Total Volume	Total Duration
	3.63	31	0.78		

(1) Storm Total (in) data from National Weather Service, Wakefield Office, Richmond International Airport.

City of Richmond, Virginia  
Overflow Frequency by Month  
CSO09 - 7th Street 2004-2011



\* Average Overflow Frequency is less than once per year (<1/yr)

Month

## CSO10 - Gambles Hill

### Rainfall and Overflow Model Summary

**Current Month: July 2011**

Date	Num of Overflows	Storm <sup>(1)</sup> Total (in.)	Hours of Rainfall	Maximum Storm Intensity (in./hr.)	Volume of Overflow (MG)	Duration of Overflow (hrs.)
7/1/11						
7/2/11						
7/3/11		0.18	2	0.17	none	none
7/4/11		0.93	4	0.78	none	none
7/5/11						
7/6/11		0.31	5	0.12	none	none
7/7/11						
7/8/11		1.73	11	0.66	none	none
7/9/11						
7/10/11						
7/11/11						
7/12/11						
7/13/11		0.01	1	0.01	none	none
7/14/11						
7/15/11						
7/16/11						
7/17/11						
7/18/11						
7/19/11						
7/20/11						
7/21/11						
7/22/11						
7/23/11		0.03	2	0.02	none	none
7/24/11						
7/25/11		0.41	5	0.21	none	none
7/26/11						
7/27/11						
7/28/11						
7/29/11						
7/30/11						
7/31/11		0.03	1	0.03	none	none

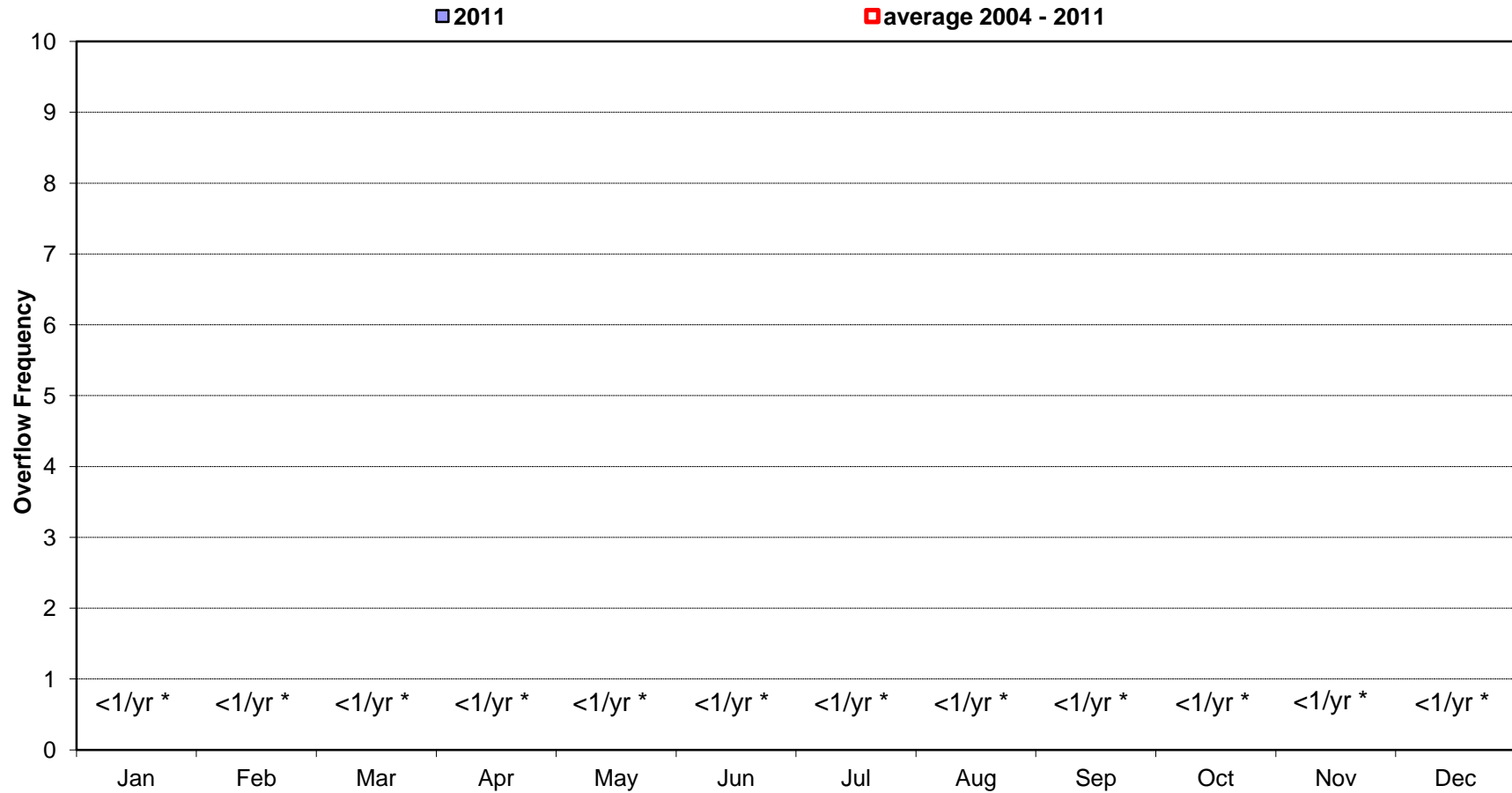
#### MONTH SUMMARY

Num of Overflows	Total Rain	Total Hours	Max Intensity	Total Volume	Total Duration
	3.63	31	0.78		

(1) Storm Total (in) data from National Weather Service, Wakefield Office, Richmond International Airport.

City of Richmond, Virginia  
Overflow Frequency by Month

CSO10 - Gambles Hill 2004-2011



\* Average Overflow Frequency is less than once per year (<1/yr)

Month

**CSO11 - Park Hydro**  
**Rainfall and Overflow Model Summary**  
**Current Month: July 2011**

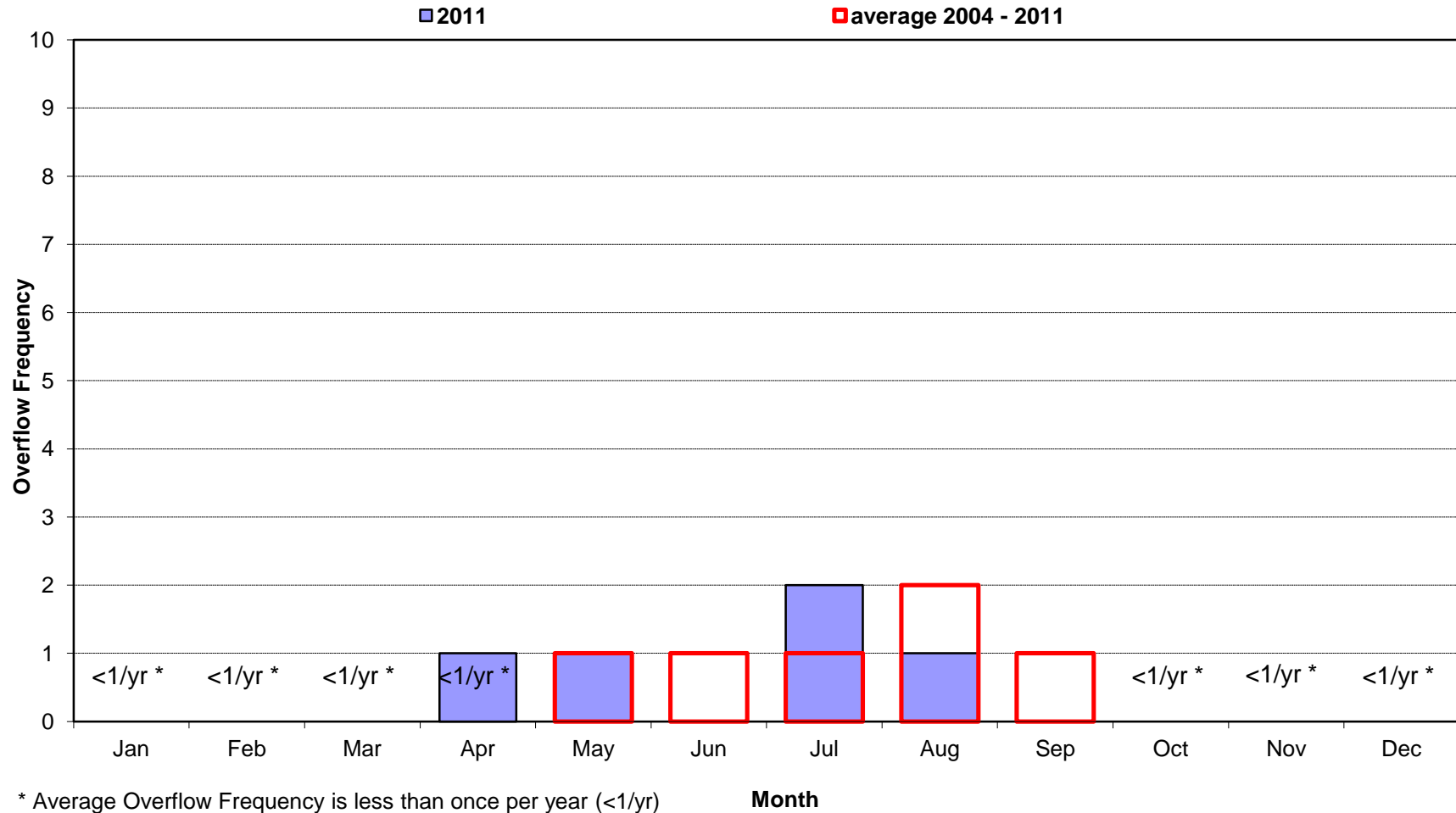
Date	Num of Overflows	Storm <sup>(1)</sup> Total (in.)	Hours of Rainfall	Maximum Storm Intensity (in./hr.)	Volume of Overflow (MG)	Duration of Overflow (hrs.)
7/1/11						
7/2/11						
7/3/11		0.18	2	0.17	none	none
7/4/11	1	0.93	4	0.78	0.40	2
7/5/11						
7/6/11		0.31	5	0.12	none	none
7/7/11						
7/8/11	1	1.73	11	0.66	0.08	2
7/9/11						
7/10/11						
7/11/11						
7/12/11						
7/13/11		0.01	1	0.01	none	none
7/14/11						
7/15/11						
7/16/11						
7/17/11						
7/18/11						
7/19/11						
7/20/11						
7/21/11						
7/22/11						
7/23/11		0.03	2	0.02	none	none
7/24/11						
7/25/11		0.41	5	0.21	none	none
7/26/11						
7/27/11						
7/28/11						
7/29/11						
7/30/11						
7/31/11		0.03	1	0.03	none	none

**MONTH SUMMARY**

Num of Overflows	Total Rain	Total Hours	Max Intensity	Total Volume	Total Duration
2	3.63	31	0.78	0.48	4

(1) Storm Total (in) data from National Weather Service, Wakefield Office, Richmond International Airport.

City of Richmond, Virginia  
Overflow Frequency by Month  
CSO11 - Park Hydro 2004-2011



**CSO12 - Hilton Street**  
**Rainfall and Overflow Model Summary**  
**Current Month: July 2011**

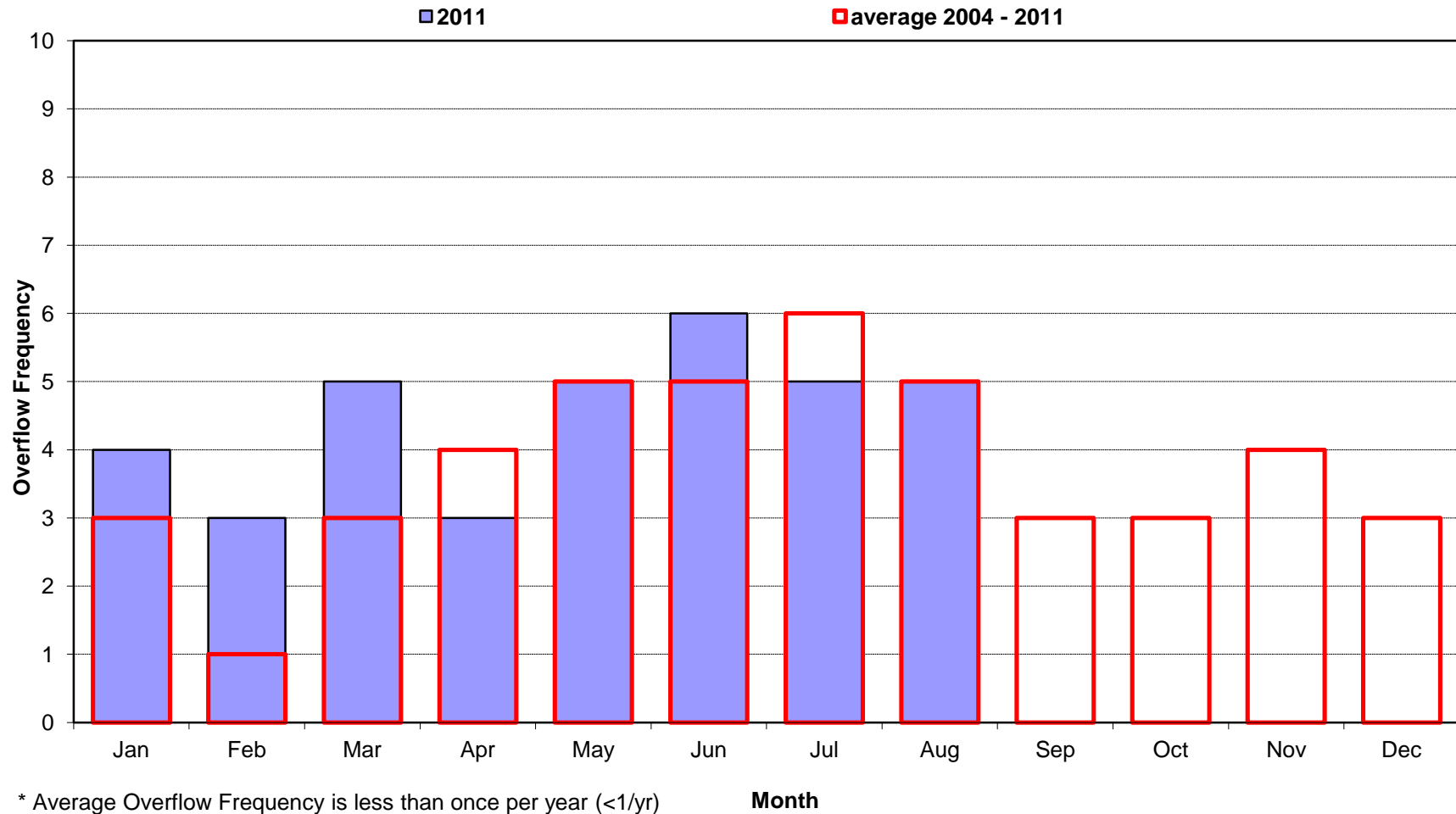
Date	Num of Overflows	Storm <sup>(1)</sup> Total (in.)	Hours of Rainfall	Maximum Storm Intensity (in./hr.)	Volume of Overflow (MG)	Duration of Overflow (hrs.)
7/1/11						
7/2/11						
7/3/11		0.18	2	0.17	none	none
7/4/11	2	0.93	4	0.78	0.29	4
7/5/11						
7/6/11	1	0.31	5	0.12	0.00	1
7/7/11						
7/8/11	1	1.73	11	0.66	0.51	9
7/9/11						
7/10/11						
7/11/11						
7/12/11						
7/13/11		0.01	1	0.01	none	none
7/14/11						
7/15/11						
7/16/11						
7/17/11						
7/18/11						
7/19/11						
7/20/11						
7/21/11						
7/22/11						
7/23/11		0.03	2	0.02	none	none
7/24/11						
7/25/11	1	0.41	5	0.21	0.04	3
7/26/11						
7/27/11						
7/28/11						
7/29/11						
7/30/11						
7/31/11		0.03	1	0.03	none	none

**MONTH SUMMARY**

Num of Overflows	Total Rain	Total Hours	Max Intensity	Total Volume	Total Duration
5	3.63	31	0.78	0.85	17

(1) Storm Total (in) data from National Weather Service, Wakefield Office, Richmond International Airport.

City of Richmond, Virginia  
Overflow Frequency by Month  
CSO12 - Hilton Street 2004-2011



**CSO13 - Maury St**  
**Rainfall and Overflow Model Summary**  
**Current Month: July 2011**

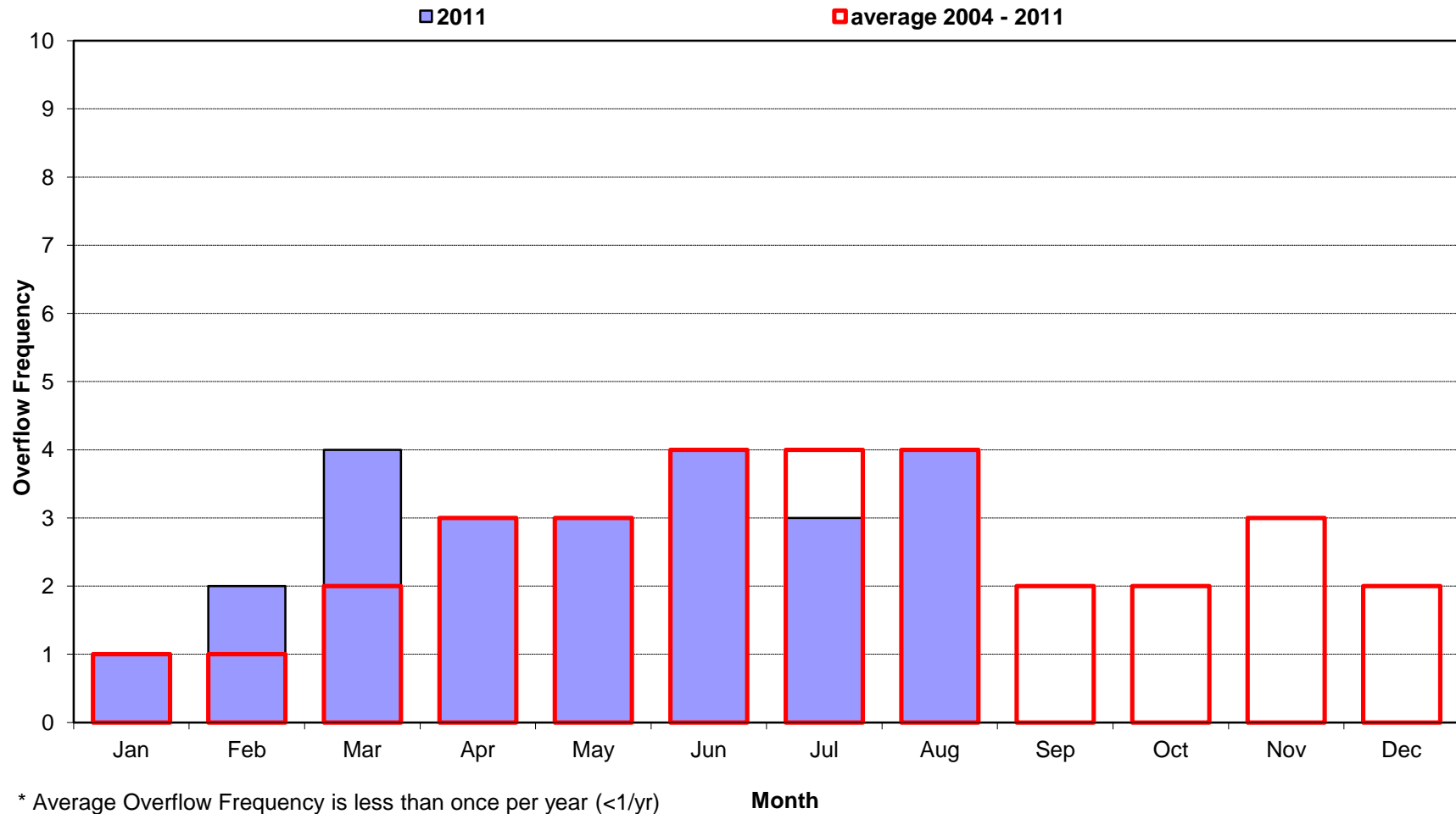
Date	Num of Overflows	Storm <sup>(1)</sup> Total (in.)	Hours of Rainfall	Maximum Storm Intensity (in./hr.)	Volume of Overflow (MG)	Duration of Overflow (hrs.)
7/1/11						
7/2/11						
7/3/11		0.18	2	0.17	none	none
7/4/11	1	0.93	4	0.78	0.14	2
7/5/11						
7/6/11		0.31	5	0.12	none	none
7/7/11						
7/8/11	1	1.73	11	0.66	0.20	6
7/9/11						
7/10/11						
7/11/11						
7/12/11						
7/13/11		0.01	1	0.01	none	none
7/14/11						
7/15/11						
7/16/11						
7/17/11						
7/18/11						
7/19/11						
7/20/11						
7/21/11						
7/22/11						
7/23/11		0.03	2	0.02	none	none
7/24/11						
7/25/11	1	0.41	5	0.21	0.00	1
7/26/11						
7/27/11						
7/28/11						
7/29/11						
7/30/11						
7/31/11		0.03	1	0.03	none	none

**MONTH SUMMARY**

Num of Overflows	Total Rain	Total Hours	Max Intensity	Total Volume	Total Duration
3	3.63	31	0.78	0.34	9

(1) Storm Total (in) data from National Weather Service, Wakefield Office, Richmond International Airport.

City of Richmond, Virginia  
Overflow Frequency by Month  
CSO13 - Maury St 2004-2011



**CSO14 - Stockton**

**Rainfall and Overflow Model Summary**

**Current Month: July 2011**

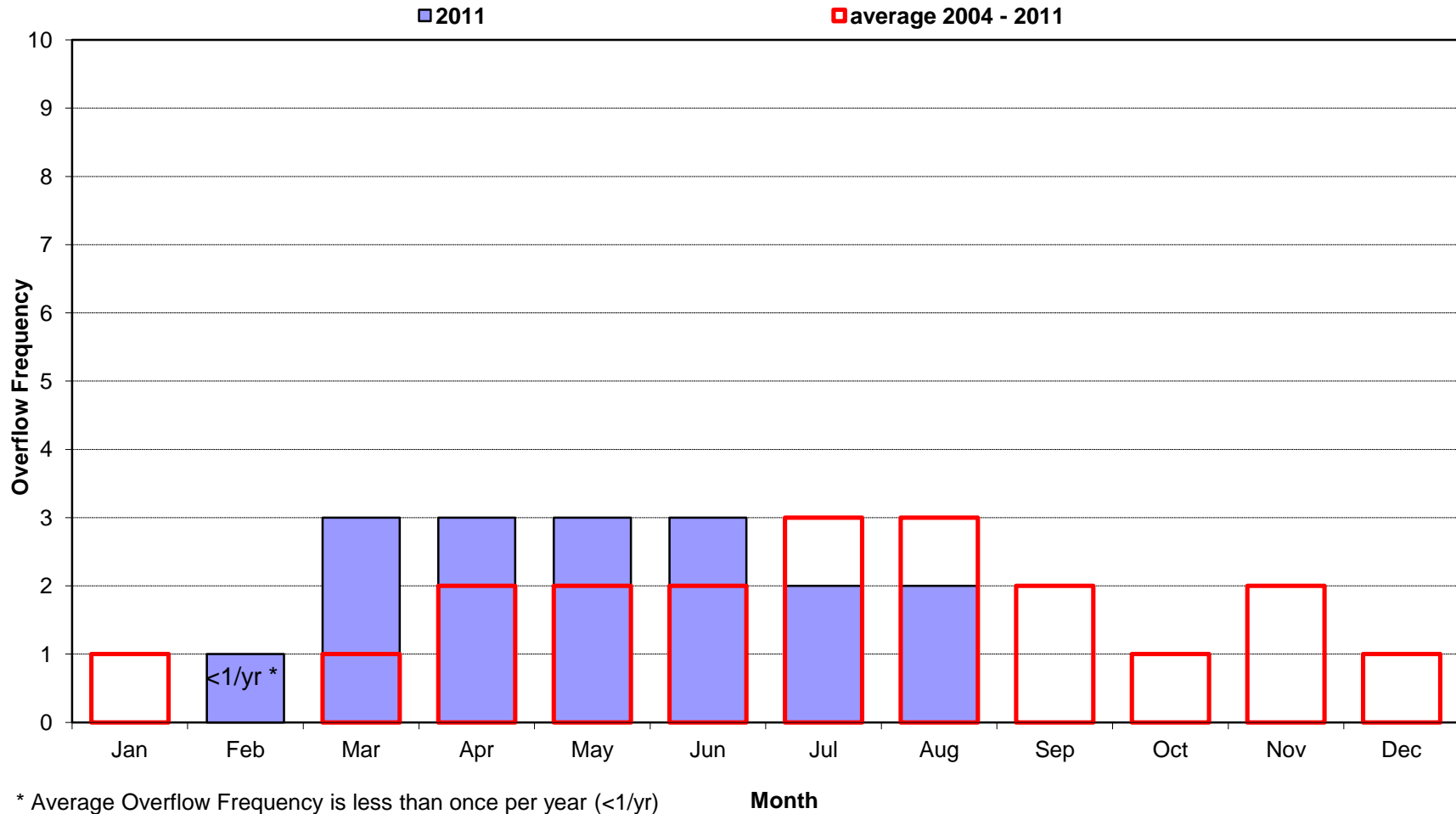
Date	Num of Overflows	Storm <sup>(1)</sup> Total (in.)	Hours of Rainfall	Maximum Storm Intensity (in./hr.)	Volume of Overflow (MG)	Duration of Overflow (hrs.)
7/1/11						
7/2/11						
7/3/11		0.18	2	0.17	none	none
7/4/11	1	0.93	4	0.78	2.50	2
7/5/11						
7/6/11		0.31	5	0.12	none	none
7/7/11						
7/8/11	1	1.73	11	0.66	3.30	6
7/9/11						
7/10/11						
7/11/11						
7/12/11						
7/13/11		0.01	1	0.01	none	none
7/14/11						
7/15/11						
7/16/11						
7/17/11						
7/18/11						
7/19/11						
7/20/11						
7/21/11						
7/22/11						
7/23/11		0.03	2	0.02	none	none
7/24/11						
7/25/11		0.41	5	0.21	none	none
7/26/11						
7/27/11						
7/28/11						
7/29/11						
7/30/11						
7/31/11		0.03	1	0.03	none	none

**MONTH SUMMARY**

Num of Overflows	Total Rain	Total Hours	Max Intensity	Total Volume	Total Duration
2	3.63	31	0.78	5.80	8

(1) Storm Total (in) data from National Weather Service, Wakefield Office, Richmond International Airport.

City of Richmond, Virginia  
Overflow Frequency by Month  
CSO14 - Stockton 2004-2011



## CSO15 - Canoe Run

### Rainfall and Overflow Model Summary

**Current Month: July 2011**

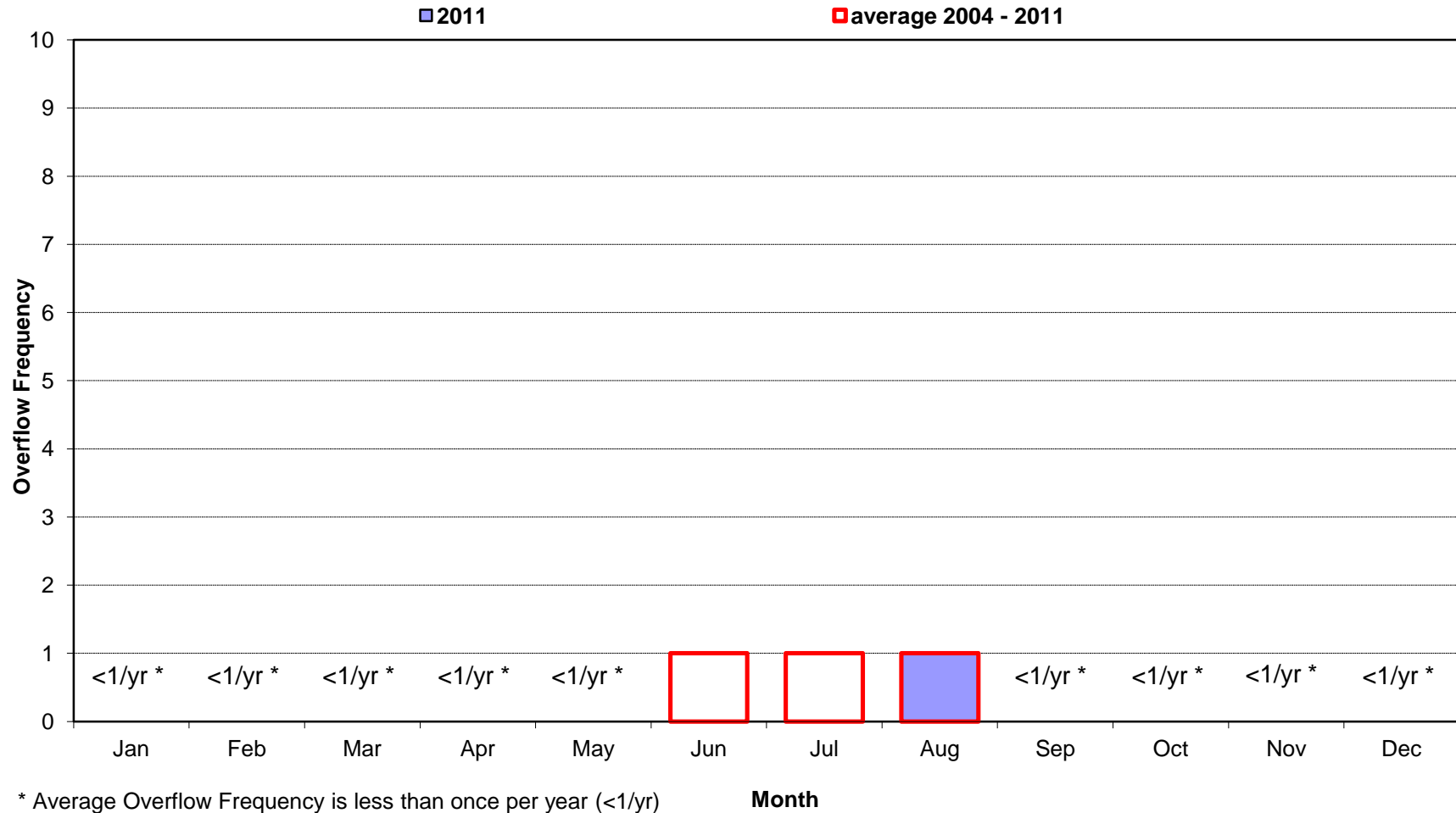
Date	Num of Overflows	Storm <sup>(1)</sup> Total (in.)	Hours of Rainfall	Maximum Storm Intensity (in./hr.)	Volume of Overflow (MG)	Duration of Overflow (hrs.)
7/1/11						
7/2/11						
7/3/11		0.18	2	0.17	none	none
7/4/11		0.93	4	0.78	none	none
7/5/11						
7/6/11		0.31	5	0.12	none	none
7/7/11						
7/8/11		1.73	11	0.66	none	none
7/9/11						
7/10/11						
7/11/11						
7/12/11						
7/13/11		0.01	1	0.01	none	none
7/14/11						
7/15/11						
7/16/11						
7/17/11						
7/18/11						
7/19/11						
7/20/11						
7/21/11						
7/22/11						
7/23/11		0.03	2	0.02	none	none
7/24/11						
7/25/11		0.41	5	0.21	none	none
7/26/11						
7/27/11						
7/28/11						
7/29/11						
7/30/11						
7/31/11		0.03	1	0.03	none	none

#### MONTH SUMMARY

Num of Overflows	Total Rain	Total Hours	Max Intensity	Total Volume	Total Duration
	3.63	31	0.78		

(1) Storm Total (in) data from National Weather Service, Wakefield Office, Richmond International Airport.

City of Richmond, Virginia  
Overflow Frequency by Month  
CSO15 - Canoe Run 2004-2011



**CSO16 - Woodland**  
**Rainfall and Overflow Model Summary**  
**Current Month: July 2011**

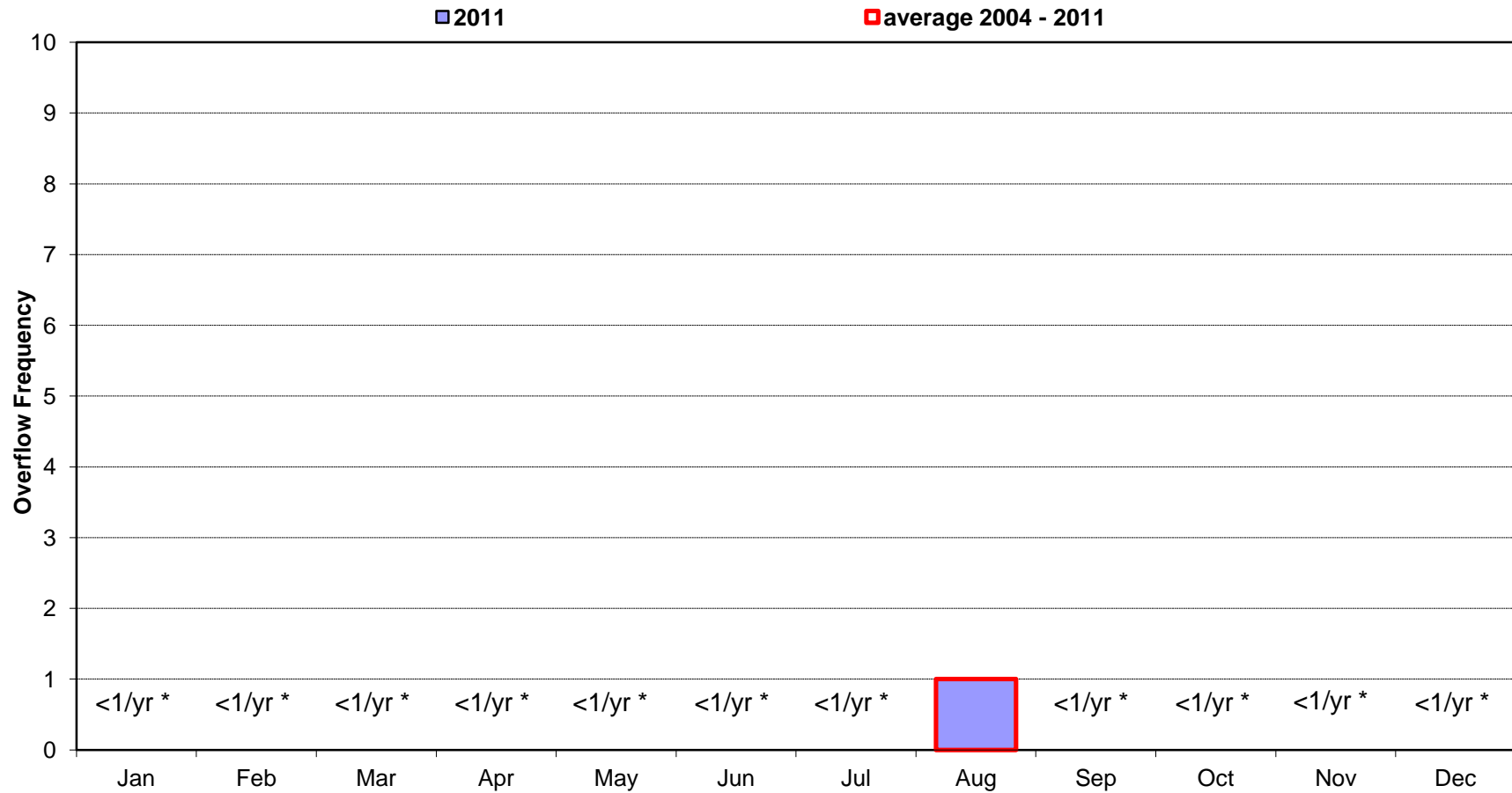
Date	Num of Overflows	Storm <sup>(1)</sup> Total (in.)	Hours of Rainfall	Maximum Storm Intensity (in./hr.)	Volume of Overflow (MG)	Duration of Overflow (hrs.)
7/1/11						
7/2/11						
7/3/11		0.18	2	0.17	none	none
7/4/11		0.93	4	0.78	none	none
7/5/11						
7/6/11		0.31	5	0.12	none	none
7/7/11						
7/8/11		1.73	11	0.66	none	none
7/9/11						
7/10/11						
7/11/11						
7/12/11						
7/13/11		0.01	1	0.01	none	none
7/14/11						
7/15/11						
7/16/11						
7/17/11						
7/18/11						
7/19/11						
7/20/11						
7/21/11						
7/22/11						
7/23/11		0.03	2	0.02	none	none
7/24/11						
7/25/11		0.41	5	0.21	none	none
7/26/11						
7/27/11						
7/28/11						
7/29/11						
7/30/11						
7/31/11		0.03	1	0.03	none	none

**MONTH SUMMARY**

Num of Overflows	Total Rain	Total Hours	Max Intensity	Total Volume	Total Duration
	3.63	31	0.78		

(1) Storm Total (in) data from National Weather Service, Wakefield Office, Richmond International Airport.

City of Richmond, Virginia  
Overflow Frequency by Month  
CSO16 - Woodland 2004-2011



\* Average Overflow Frequency is less than once per year (<1/yr)

Month

**CSO17 - Reedy Creek**  
**Rainfall and Overflow Model Summary**  
**Current Month: July 2011**

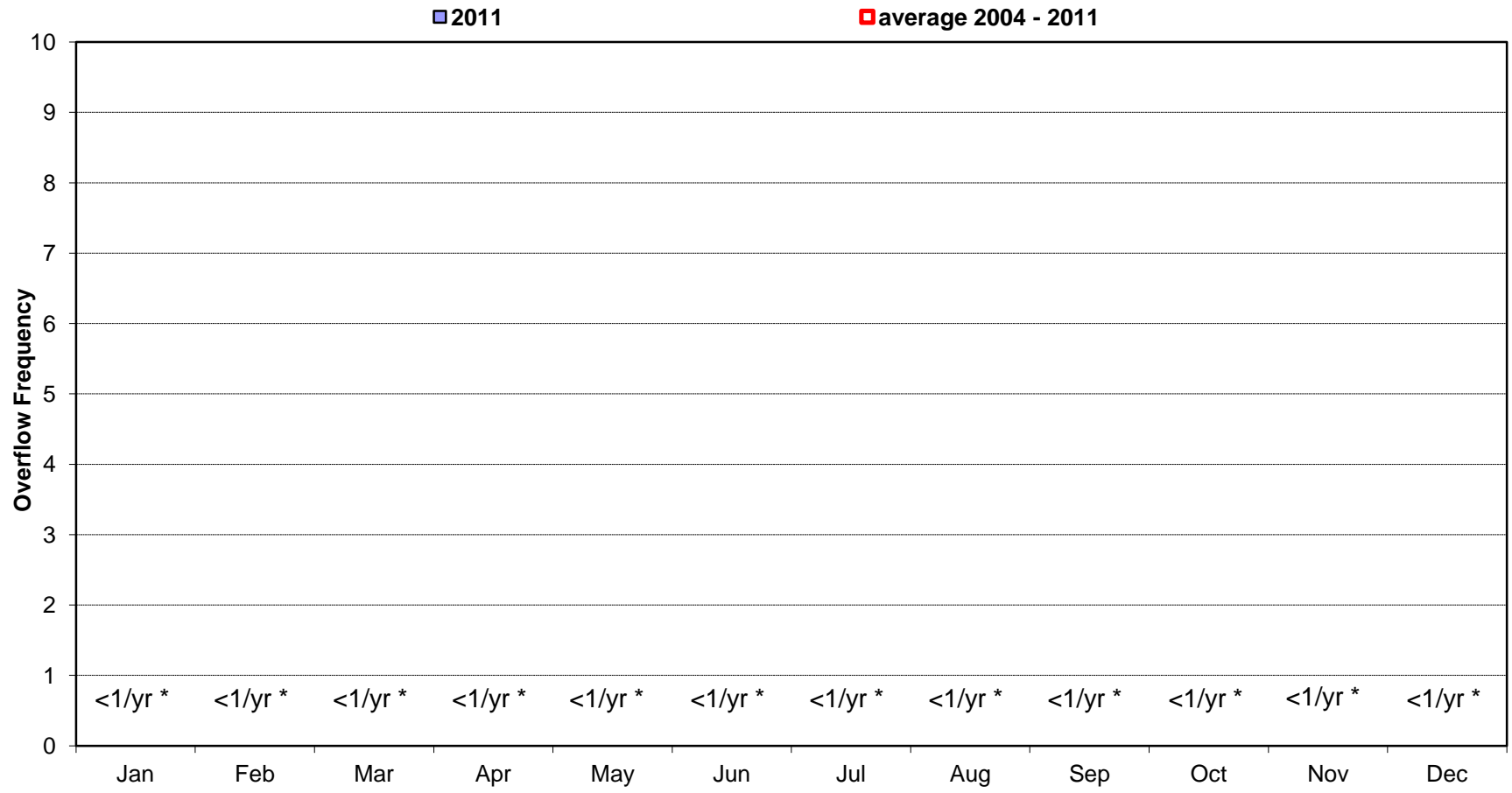
Date	Num of Overflows	Storm <sup>(1)</sup> Total (in.)	Hours of Rainfall	Maximum Storm Intensity (in./hr.)	Volume of Overflow (MG)	Duration of Overflow (hrs.)
7/1/11						
7/2/11						
7/3/11		0.18	2	0.17	none	none
7/4/11		0.93	4	0.78	none	none
7/5/11						
7/6/11		0.31	5	0.12	none	none
7/7/11						
7/8/11		1.73	11	0.66	none	none
7/9/11						
7/10/11						
7/11/11						
7/12/11						
7/13/11		0.01	1	0.01	none	none
7/14/11						
7/15/11						
7/16/11						
7/17/11						
7/18/11						
7/19/11						
7/20/11						
7/21/11						
7/22/11						
7/23/11		0.03	2	0.02	none	none
7/24/11						
7/25/11		0.41	5	0.21	none	none
7/26/11						
7/27/11						
7/28/11						
7/29/11						
7/30/11						
7/31/11		0.03	1	0.03	none	none

**MONTH SUMMARY**

Num of Overflows	Total Rain	Total Hours	Max Intensity	Total Volume	Total Duration
	3.63	31	0.78		

(1) Storm Total (in) data from National Weather Service, Wakefield Office, Richmond International Airport.

City of Richmond, Virginia  
Overflow Frequency by Month  
CSO17 - Reedy Creek 2004-2011



\* Average Overflow Frequency is less than once per year (<1/yr)

Month

## CSO18 - 42nd Street

### Rainfall and Overflow Model Summary

**Current Month: July 2011**

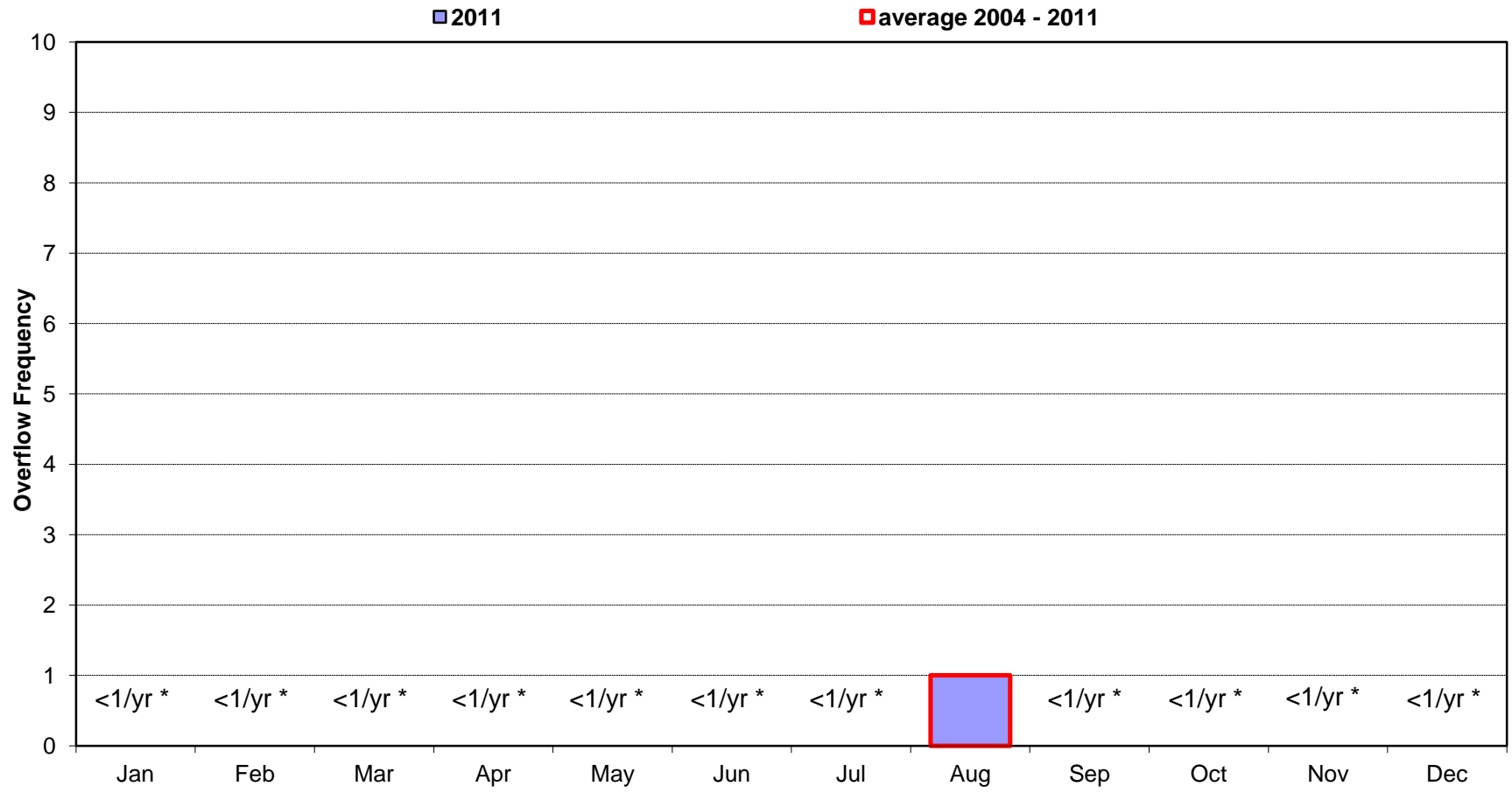
Date	Num of Overflows	Storm <sup>(1)</sup> Total (in.)	Hours of Rainfall	Maximum Storm Intensity (in./hr.)	Volume of Overflow (MG)	Duration of Overflow (hrs.)
7/1/11						
7/2/11						
7/3/11		0.18	2	0.17	none	none
7/4/11		0.93	4	0.78	none	none
7/5/11						
7/6/11		0.31	5	0.12	none	none
7/7/11						
7/8/11		1.73	11	0.66	none	none
7/9/11						
7/10/11						
7/11/11						
7/12/11						
7/13/11		0.01	1	0.01	none	none
7/14/11						
7/15/11						
7/16/11						
7/17/11						
7/18/11						
7/19/11						
7/20/11						
7/21/11						
7/22/11						
7/23/11		0.03	2	0.02	none	none
7/24/11						
7/25/11		0.41	5	0.21	none	none
7/26/11						
7/27/11						
7/28/11						
7/29/11						
7/30/11						
7/31/11		0.03	1	0.03	none	none

#### MONTH SUMMARY

Num of Overflows	Total Rain	Total Hours	Max Intensity	Total Volume	Total Duration
	3.63	31	0.78		

(1) Storm Total (in) data from National Weather Service, Wakefield Office, Richmond International Airport.

City of Richmond, Virginia  
Overflow Frequency by Month  
CSO18 - 42nd Street 2004-2011



\* Average Overflow Frequency is less than once per year (<1/yr)

Month

**CSO19 - Hampton CO**  
**Rainfall and Overflow Model Summary**  
**Current Month: July 2011**

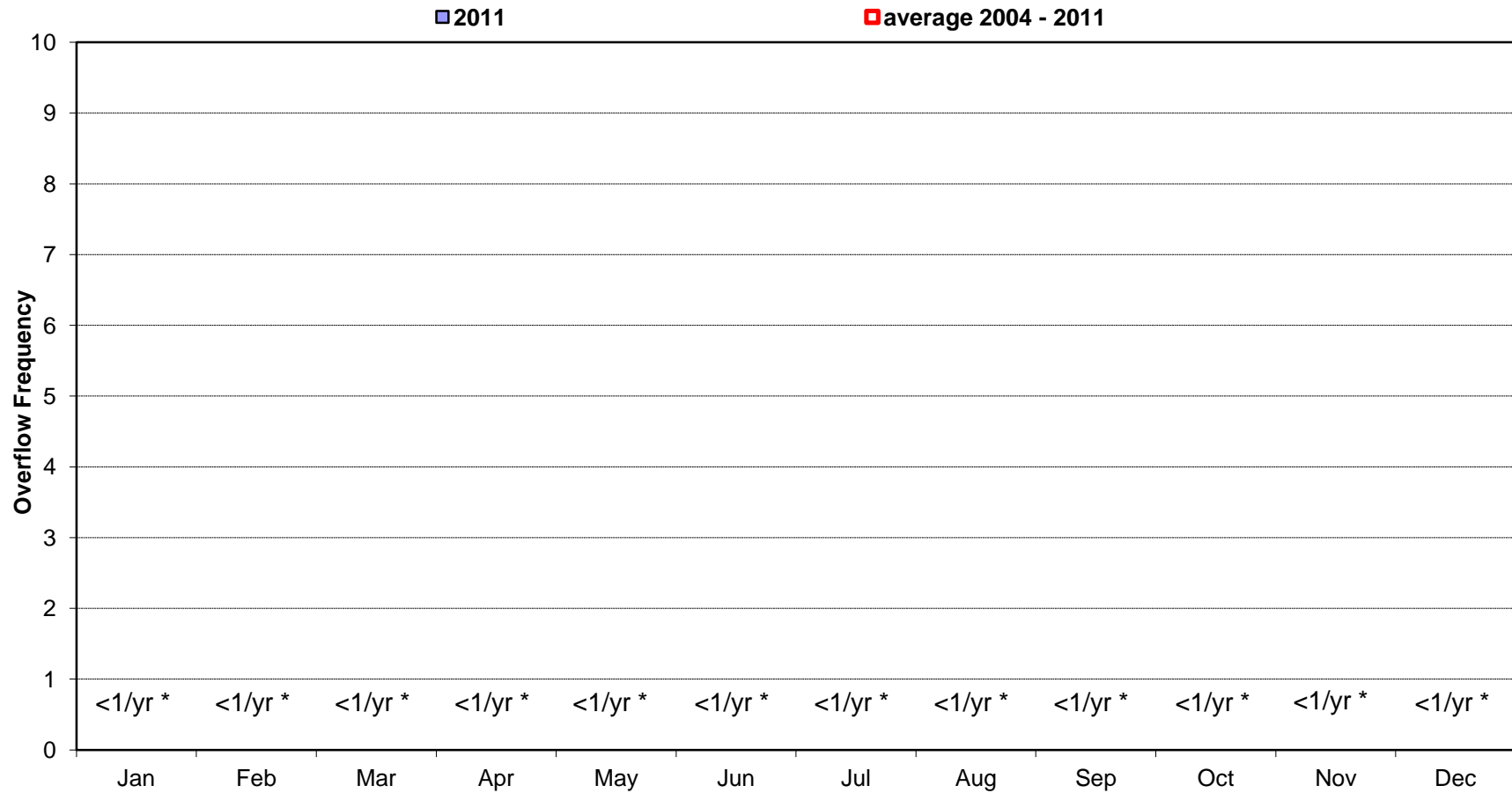
Date	Num of Overflows	Storm <sup>(1)</sup> Total (in.)	Hours of Rainfall	Maximum Storm Intensity (in./hr.)	Volume of Overflow (MG)	Duration of Overflow (hrs.)
7/1/11						
7/2/11						
7/3/11		0.18	2	0.17	none	none
7/4/11		0.93	4	0.78	none	none
7/5/11						
7/6/11		0.31	5	0.12	none	none
7/7/11						
7/8/11		1.73	11	0.66	none	none
7/9/11						
7/10/11						
7/11/11						
7/12/11						
7/13/11		0.01	1	0.01	none	none
7/14/11						
7/15/11						
7/16/11						
7/17/11						
7/18/11						
7/19/11						
7/20/11						
7/21/11						
7/22/11						
7/23/11		0.03	2	0.02	none	none
7/24/11						
7/25/11		0.41	5	0.21	none	none
7/26/11						
7/27/11						
7/28/11						
7/29/11						
7/30/11						
7/31/11		0.03	1	0.03	none	none

**MONTH SUMMARY**

Num of Overflows	Total Rain	Total Hours	Max Intensity	Total Volume	Total Duration
	3.63	31	0.78		

(1) Storm Total (in) data from National Weather Service, Wakefield Office, Richmond International Airport.

City of Richmond, Virginia  
Overflow Frequency by Month  
CSO19 - Hampton CO 2004-2011



\* Average Overflow Frequency is less than once per year (<1/yr)

Month

**CSO19 - Hampton NY**  
**Rainfall and Overflow Model Summary**  
**Current Month: July 2011**

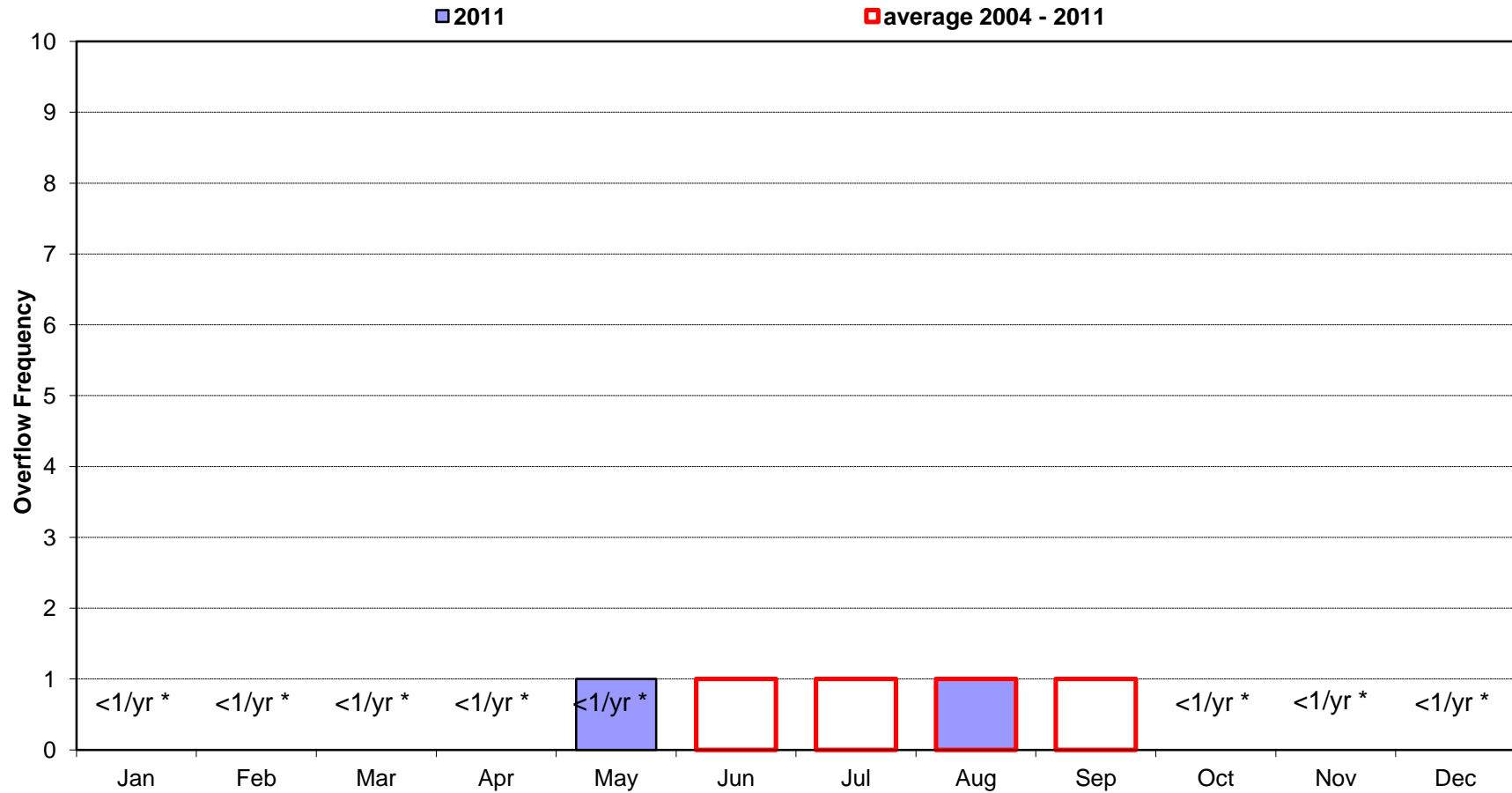
Date	Num of Overflows	Storm <sup>(1)</sup> Total (in.)	Hours of Rainfall	Maximum Storm Intensity (in./hr.)	Volume of Overflow (MG)	Duration of Overflow (hrs.)
7/1/11						
7/2/11						
7/3/11		0.18	2	0.17	none	none
7/4/11		0.93	4	0.78	none	none
7/5/11						
7/6/11		0.31	5	0.12	none	none
7/7/11						
7/8/11		1.73	11	0.66	none	none
7/9/11						
7/10/11						
7/11/11						
7/12/11						
7/13/11		0.01	1	0.01	none	none
7/14/11						
7/15/11						
7/16/11						
7/17/11						
7/18/11						
7/19/11						
7/20/11						
7/21/11						
7/22/11						
7/23/11		0.03	2	0.02	none	none
7/24/11						
7/25/11		0.41	5	0.21	none	none
7/26/11						
7/27/11						
7/28/11						
7/29/11						
7/30/11						
7/31/11		0.03	1	0.03	none	none

**MONTH SUMMARY**

Num of Overflows	Total Rain	Total Hours	Max Intensity	Total Volume	Total Duration
	3.63	31	0.78		

(1) Storm Total (in) data from National Weather Service, Wakefield Office, Richmond International Airport.

City of Richmond, Virginia  
Overflow Frequency by Month  
CSO19 - Hampton NY 2004-2011



\* Average Overflow Frequency is less than once per year (<1/yr)

Month

**CSO20 - Mc Cloy**

**Rainfall and Overflow Model Summary**

**Current Month: July 2011**

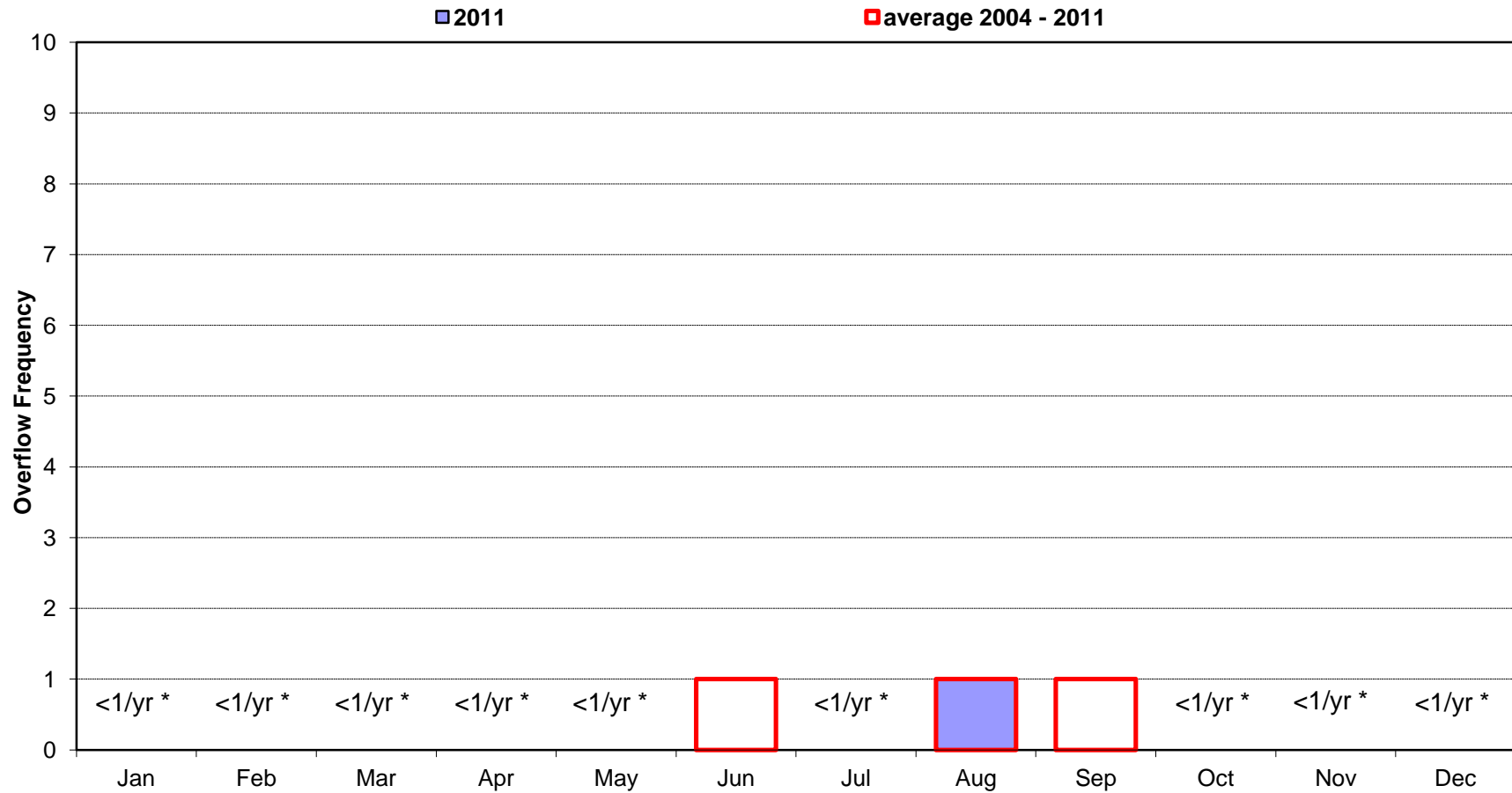
Date	Num of Overflows	Storm <sup>(1)</sup> Total (in.)	Hours of Rainfall	Maximum Storm Intensity (in./hr.)	Volume of Overflow (MG)	Duration of Overflow (hrs.)
7/1/11						
7/2/11						
7/3/11		0.18	2	0.17	none	none
7/4/11		0.93	4	0.78	none	none
7/5/11						
7/6/11		0.31	5	0.12	none	none
7/7/11						
7/8/11		1.73	11	0.66	none	none
7/9/11						
7/10/11						
7/11/11						
7/12/11						
7/13/11		0.01	1	0.01	none	none
7/14/11						
7/15/11						
7/16/11						
7/17/11						
7/18/11						
7/19/11						
7/20/11						
7/21/11						
7/22/11						
7/23/11		0.03	2	0.02	none	none
7/24/11						
7/25/11		0.41	5	0.21	none	none
7/26/11						
7/27/11						
7/28/11						
7/29/11						
7/30/11						
7/31/11		0.03	1	0.03	none	none

**MONTH SUMMARY**

Num of Overflows	Total Rain	Total Hours	Max Intensity	Total Volume	Total Duration
	3.63	31	0.78		

(1) Storm Total (in) data from National Weather Service, Wakefield Office, Richmond International Airport.

City of Richmond, Virginia  
Overflow Frequency by Month  
CSO20 - Mc Cloy 2004-2011



\* Average Overflow Frequency is less than once per year (<1/yr)

Month

**CSO21 - Gordon Ave**  
**Rainfall and Overflow Model Summary**  
**Current Month: July 2011**

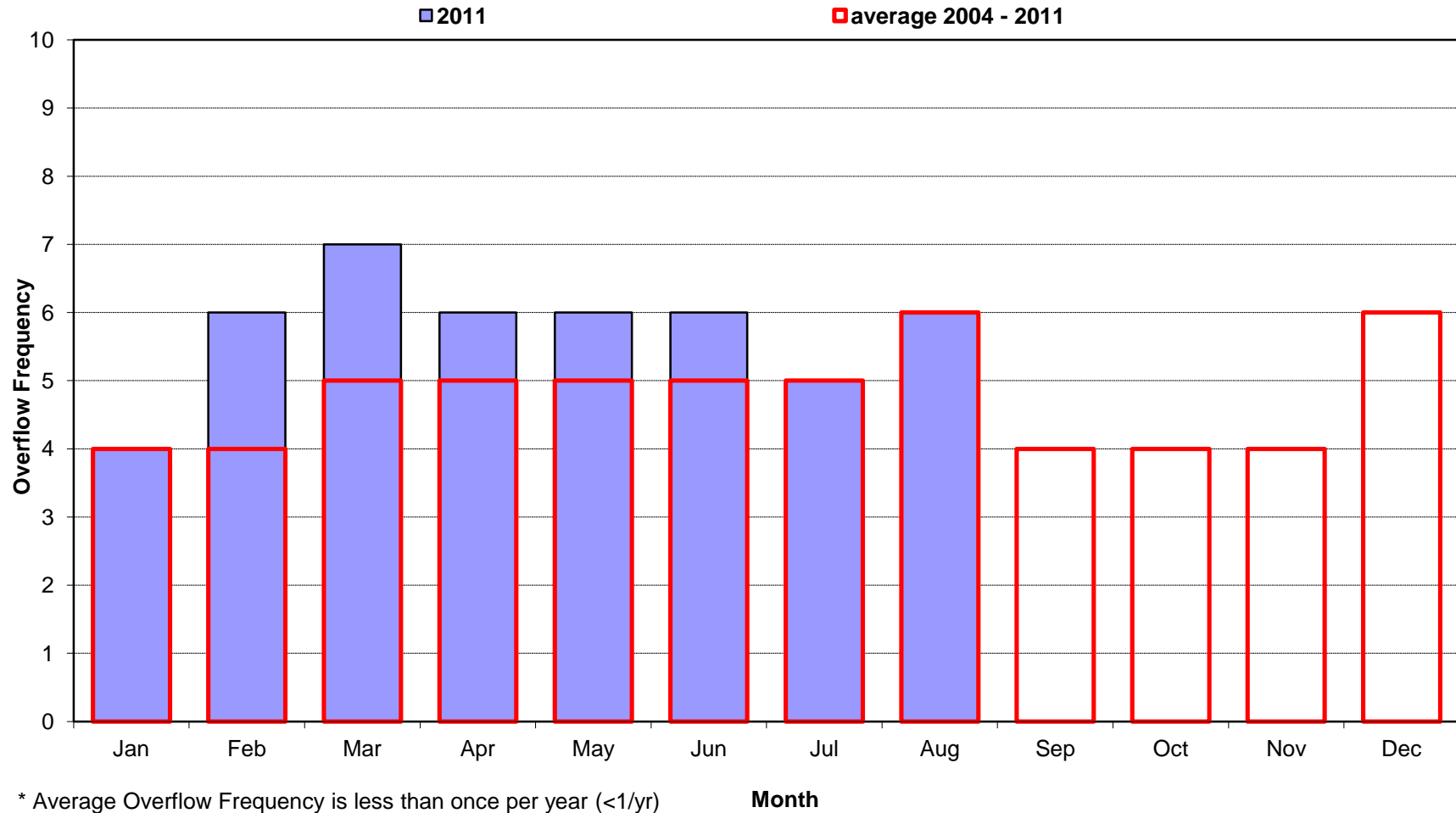
Date	Num of Overflows	Storm <sup>(1)</sup> Total (in.)	Hours of Rainfall	Maximum Storm Intensity (in./hr.)	Volume of Overflow (MG)	Duration of Overflow (hrs.)
7/1/11						
7/2/11						
7/3/11		0.18	2	0.17	none	none
7/4/11	2	0.93	4	0.78	4.50	5
7/5/11						
7/6/11	1	0.31	5	0.12	0.58	4
7/7/11						
7/8/11	1	1.73	11	0.66	7.49	9
7/9/11						
7/10/11						
7/11/11						
7/12/11						
7/13/11		0.01	1	0.01	none	none
7/14/11						
7/15/11						
7/16/11						
7/17/11						
7/18/11						
7/19/11						
7/20/11						
7/21/11						
7/22/11						
7/23/11		0.03	2	0.02	none	none
7/24/11						
7/25/11	1	0.41	5	0.21	0.99	4
7/26/11						
7/27/11						
7/28/11						
7/29/11						
7/30/11						
7/31/11		0.03	1	0.03	none	none

**MONTH SUMMARY**

Num of Overflows	Total Rain	Total Hours	Max Intensity	Total Volume	Total Duration
5	3.63	31	0.78	13.57	22

(1) Storm Total (in) data from National Weather Service, Wakefield Office, Richmond International Airport.

City of Richmond, Virginia  
Overflow Frequency by Month  
CSO21 - Gordon Ave 2004-2011



**CSO23 - Old Ful St Bridge**  
**Rainfall and Overflow Model Summary**  
**Current Month: July 2011**

Date	Num of Overflows	Storm <sup>(1)</sup> Total (in.)	Hours of Rainfall	Maximum Storm Intensity (in./hr.)	Volume of Overflow (MG)	Duration of Overflow (hrs.)
7/1/11						
7/2/11						
7/3/11		0.18	2	0.17	none	none
7/4/11		0.93	4	0.78	none	none
7/5/11						
7/6/11		0.31	5	0.12	none	none
7/7/11						
7/8/11		1.73	11	0.66	none	none
7/9/11						
7/10/11						
7/11/11						
7/12/11						
7/13/11		0.01	1	0.01	none	none
7/14/11						
7/15/11						
7/16/11						
7/17/11						
7/18/11						
7/19/11						
7/20/11						
7/21/11						
7/22/11						
7/23/11		0.03	2	0.02	none	none
7/24/11						
7/25/11		0.41	5	0.21	none	none
7/26/11						
7/27/11						
7/28/11						
7/29/11						
7/30/11						
7/31/11		0.03	1	0.03	none	none

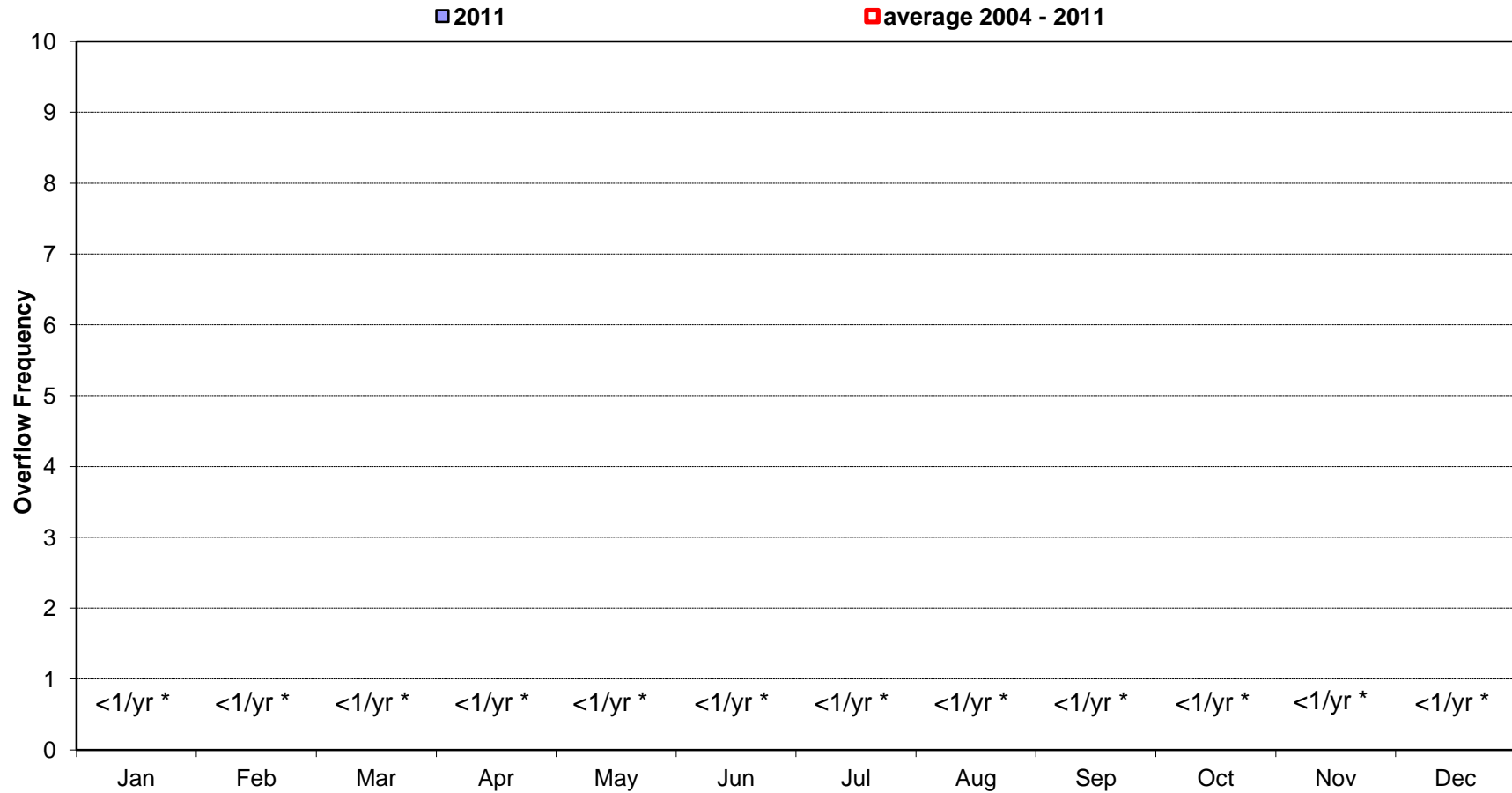
**MONTH SUMMARY**

Num of Overflows	Total Rain	Total Hours	Max Intensity	Total Volume	Total Duration
	3.63	31	0.78		

(1) Storm Total (in) data from National Weather Service, Wakefield Office, Richmond International Airport.

City of Richmond, Virginia  
Overflow Frequency by Month

CSO23 - Old Ful St Bridge 2004-2011



\* Average Overflow Frequency is less than once per year (<1/yr)

Month

**CSO24 - Gillies & Varina**  
**Rainfall and Overflow Model Summary**  
**Current Month: July 2011**

Date	Num of Overflows	Storm <sup>(1)</sup> Total (in.)	Hours of Rainfall	Maximum Storm Intensity (in./hr.)	Volume of Overflow (MG)	Duration of Overflow (hrs.)
7/1/11						
7/2/11						
7/3/11		0.18	2	0.17	none	none
7/4/11	2	0.93	4	0.78	0.67	4
7/5/11						
7/6/11	1	0.31	5	0.12	0.02	2
7/7/11						
7/8/11	1	1.73	11	0.66	1.10	9
7/9/11						
7/10/11						
7/11/11						
7/12/11						
7/13/11		0.01	1	0.01	none	none
7/14/11						
7/15/11						
7/16/11						
7/17/11						
7/18/11						
7/19/11						
7/20/11						
7/21/11						
7/22/11						
7/23/11		0.03	2	0.02	none	none
7/24/11						
7/25/11	1	0.41	5	0.21	0.11	4
7/26/11						
7/27/11						
7/28/11						
7/29/11						
7/30/11						
7/31/11		0.03	1	0.03	none	none

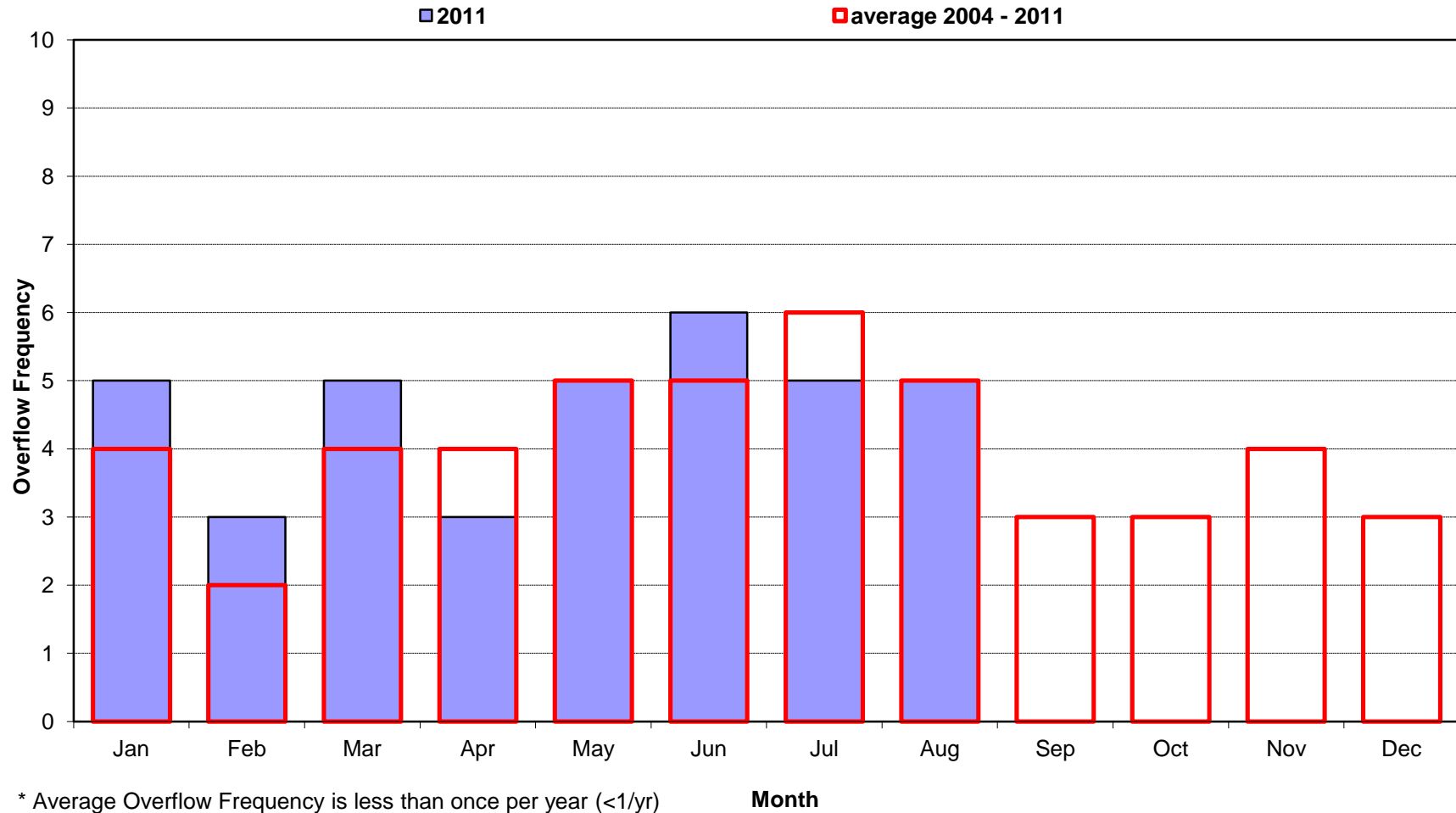
**MONTH SUMMARY**

Num of Overflows	Total Rain	Total Hours	Max Intensity	Total Volume	Total Duration
5	3.63	31	0.78	1.91	19

(1) Storm Total (in) data from National Weather Service, Wakefield Office, Richmond International Airport.

City of Richmond, Virginia  
Overflow Frequency by Month

CSO24 - Gillies & Varina 2004-2011



**CSO25 - Briel & Gillies Cr**  
**Rainfall and Overflow Model Summary**  
**Current Month: July 2011**

Date	Num of Overflows	Storm <sup>(1)</sup> Total (in.)	Hours of Rainfall	Maximum Storm Intensity (in./hr.)	Volume of Overflow (MG)	Duration of Overflow (hrs.)
7/1/11						
7/2/11						
7/3/11		0.18	2	0.17	none	none
7/4/11	2	0.93	4	0.78	0.39	4
7/5/11						
7/6/11		0.31	5	0.12	none	none
7/7/11						
7/8/11	1	1.73	11	0.66	0.66	9
7/9/11						
7/10/11						
7/11/11						
7/12/11						
7/13/11		0.01	1	0.01	none	none
7/14/11						
7/15/11						
7/16/11						
7/17/11						
7/18/11						
7/19/11						
7/20/11						
7/21/11						
7/22/11						
7/23/11		0.03	2	0.02	none	none
7/24/11						
7/25/11	1	0.41	5	0.21	0.04	2
7/26/11						
7/27/11						
7/28/11						
7/29/11						
7/30/11						
7/31/11		0.03	1	0.03	none	none

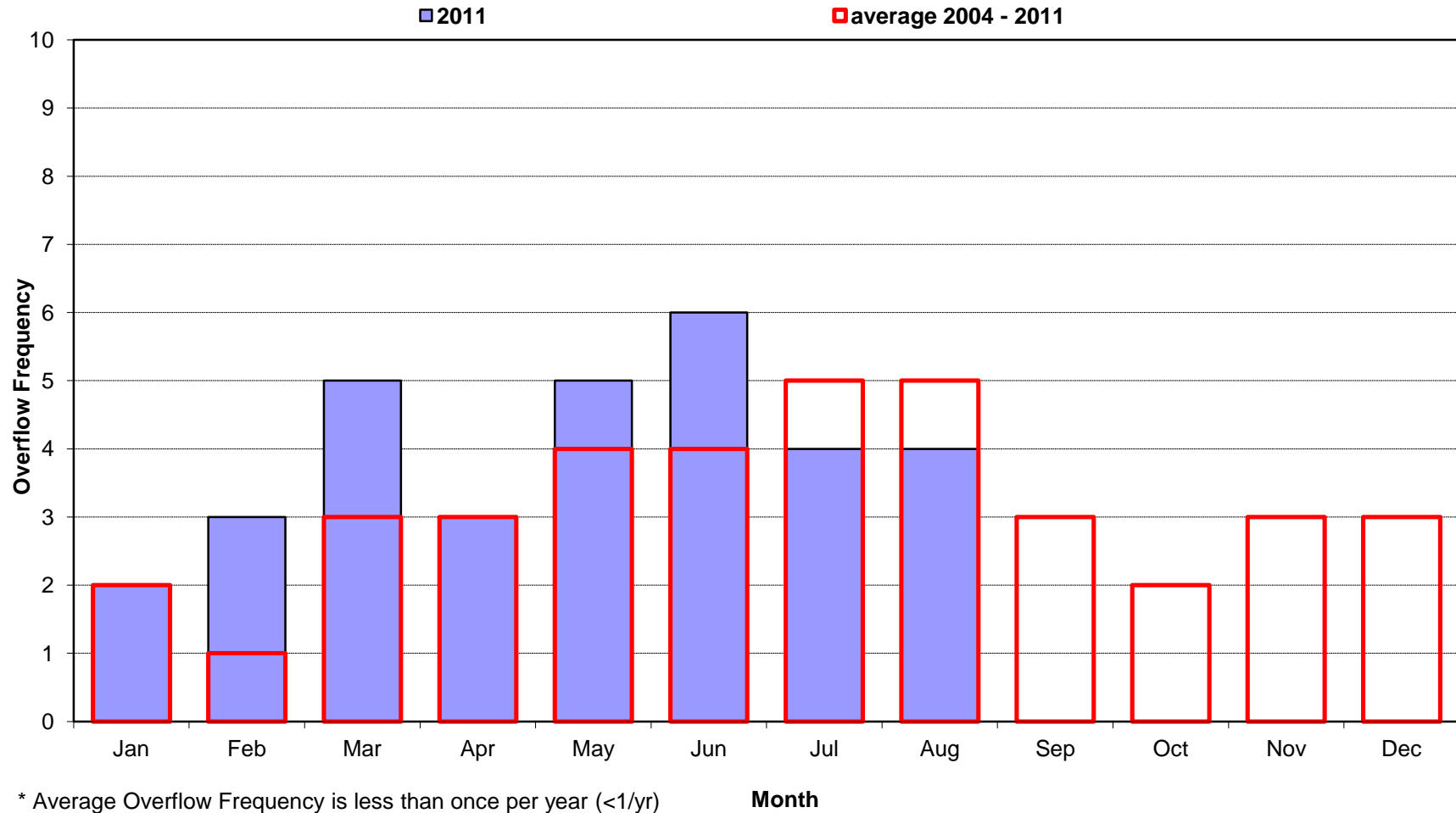
**MONTH SUMMARY**

Num of Overflows	Total Rain	Total Hours	Max Intensity	Total Volume	Total Duration
4	3.63	31	0.78	1.10	15

(1) Storm Total (in) data from National Weather Service, Wakefield Office, Richmond International Airport.

City of Richmond, Virginia  
Overflow Frequency by Month

CSO25 - Briel & Gillies Cr 2004-2011



**CSO26 - Gov't Road & NSRR**  
**Rainfall and Overflow Model Summary**  
**Current Month: July 2011**

Date	Num of Overflows	Storm <sup>(1)</sup> Total (in.)	Hours of Rainfall	Maximum Storm Intensity (in./hr.)	Volume of Overflow (MG)	Duration of Overflow (hrs.)
7/1/11						
7/2/11						
7/3/11		0.18	2	0.17	none	none
7/4/11	2	0.93	4	0.78	0.17	3
7/5/11						
7/6/11		0.31	5	0.12	none	none
7/7/11						
7/8/11	1	1.73	11	0.66	0.28	8
7/9/11						
7/10/11						
7/11/11						
7/12/11						
7/13/11		0.01	1	0.01	none	none
7/14/11						
7/15/11						
7/16/11						
7/17/11						
7/18/11						
7/19/11						
7/20/11						
7/21/11						
7/22/11						
7/23/11		0.03	2	0.02	none	none
7/24/11						
7/25/11	1	0.41	5	0.21	0.02	4
7/26/11						
7/27/11						
7/28/11						
7/29/11						
7/30/11						
7/31/11		0.03	1	0.03	none	none

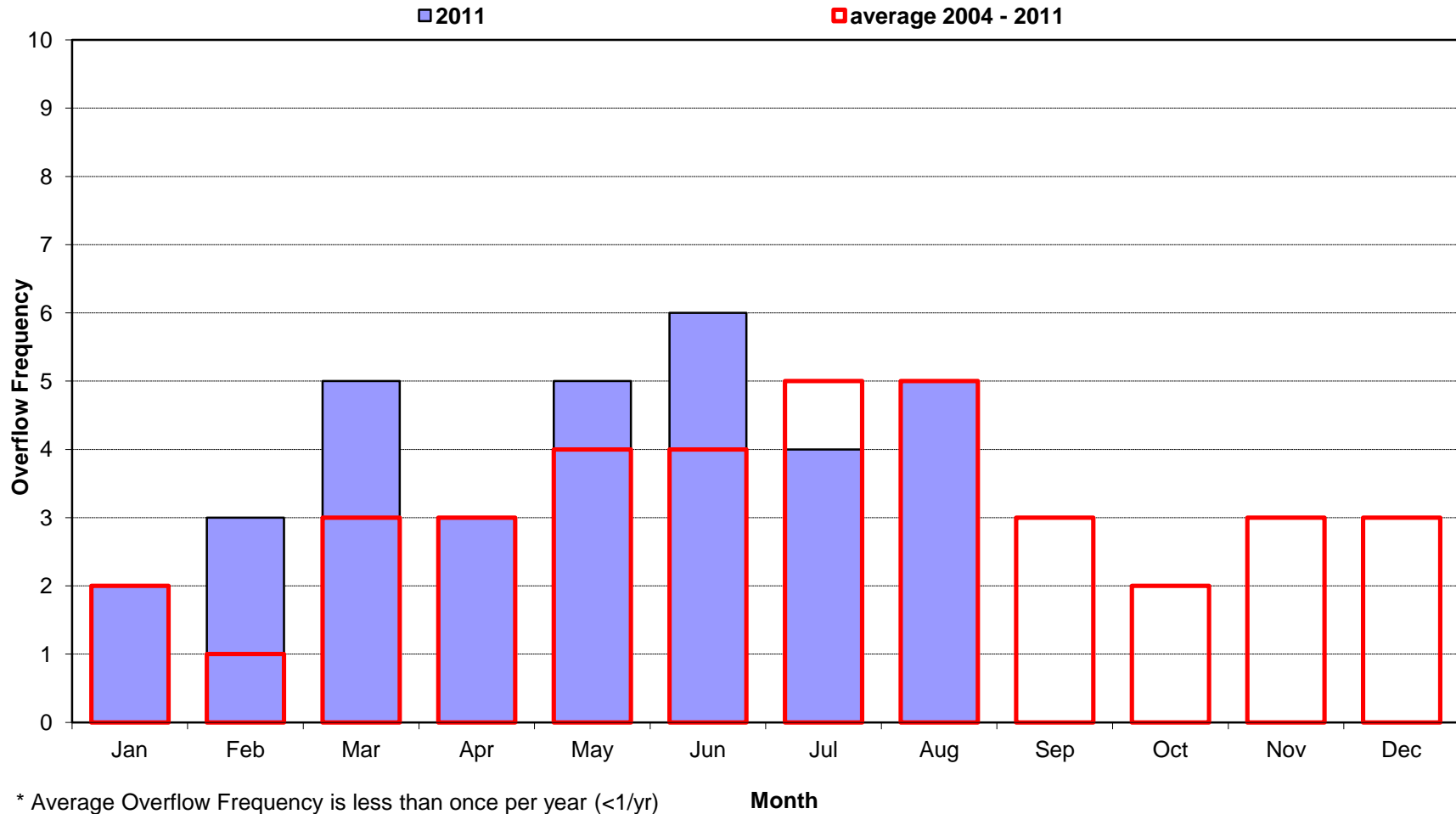
**MONTH SUMMARY**

Num of Overflows	Total Rain	Total Hours	Max Intensity	Total Volume	Total Duration
4	3.63	31	0.78	0.47	15

(1) Storm Total (in) data from National Weather Service, Wakefield Office, Richmond International Airport.

City of Richmond, Virginia  
Overflow Frequency by Month

CSO26 - Gov't Road & NSRR 2004-2011



**CSO27 - New W'Burg Road  
Rainfall and Overflow Model Summary**

**Current Month: July 2011**

Date	Num of Overflows	Storm <sup>(1)</sup> Total (in.)	Hours of Rainfall	Maximum Storm Intensity (in./hr.)	Volume of Overflow (MG)	Duration of Overflow (hrs.)
7/1/11						
7/2/11						
7/3/11		0.18	2	0.17	none	none
7/4/11		0.93	4	0.78	none	none
7/5/11						
7/6/11		0.31	5	0.12	none	none
7/7/11						
7/8/11		1.73	11	0.66	none	none
7/9/11						
7/10/11						
7/11/11						
7/12/11						
7/13/11		0.01	1	0.01	none	none
7/14/11						
7/15/11						
7/16/11						
7/17/11						
7/18/11						
7/19/11						
7/20/11						
7/21/11						
7/22/11						
7/23/11		0.03	2	0.02	none	none
7/24/11						
7/25/11		0.41	5	0.21	none	none
7/26/11						
7/27/11						
7/28/11						
7/29/11						
7/30/11						
7/31/11		0.03	1	0.03	none	none

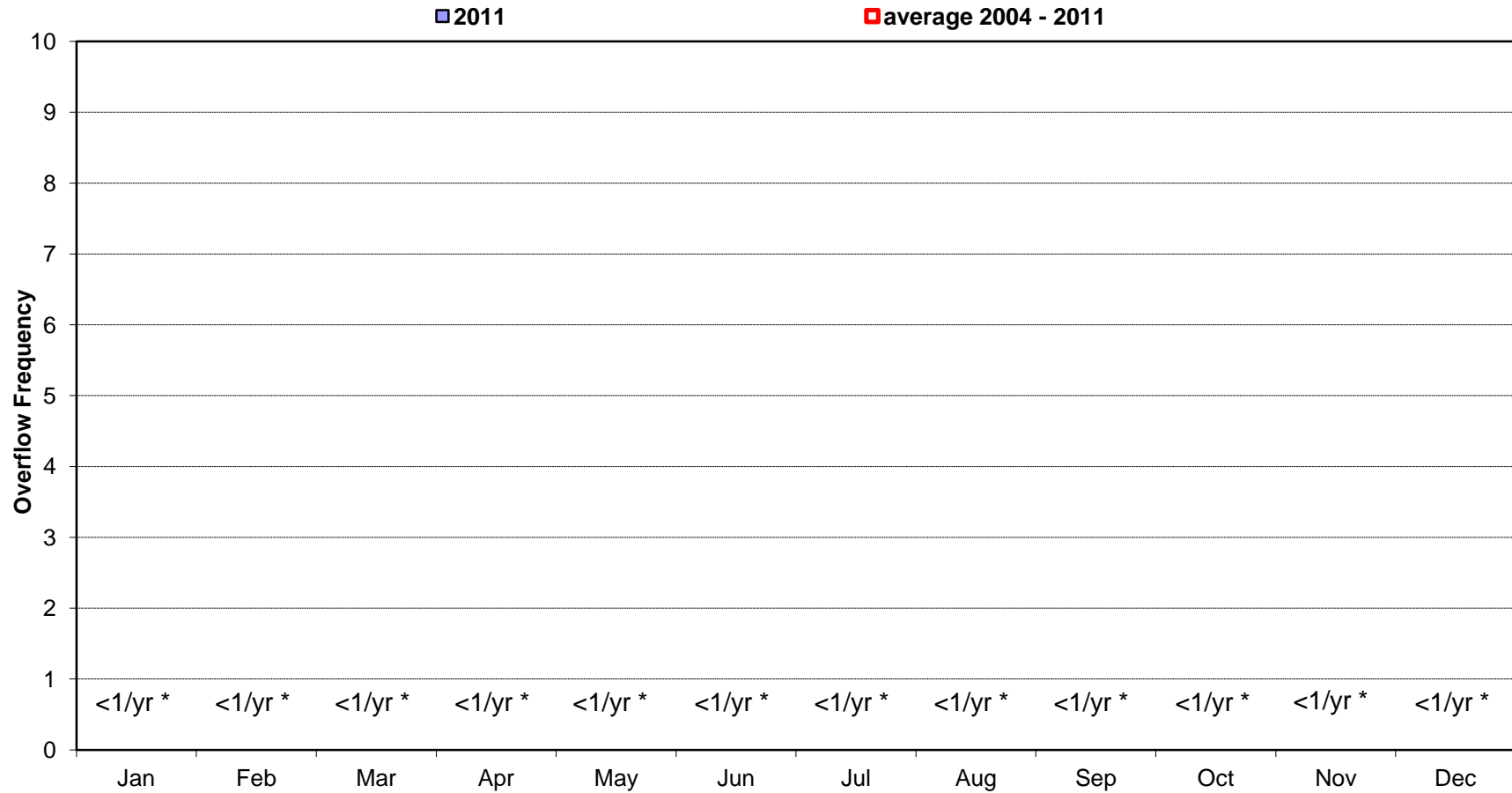
**MONTH SUMMARY**

Num of Overflows	Total Rain	Total Hours	Max Intensity	Total Volume	Total Duration
	3.63	31	0.78		

(1) Storm Total (in) data from National Weather Service, Wakefield Office, Richmond International Airport.

City of Richmond, Virginia  
Overflow Frequency by Month

CSO27 - New W'Burg Road 2004-2011



\* Average Overflow Frequency is less than once per year (<1/yr)

Month

**CSO28 - W'Burg Road**  
**Rainfall and Overflow Model Summary**  
**Current Month: July 2011**

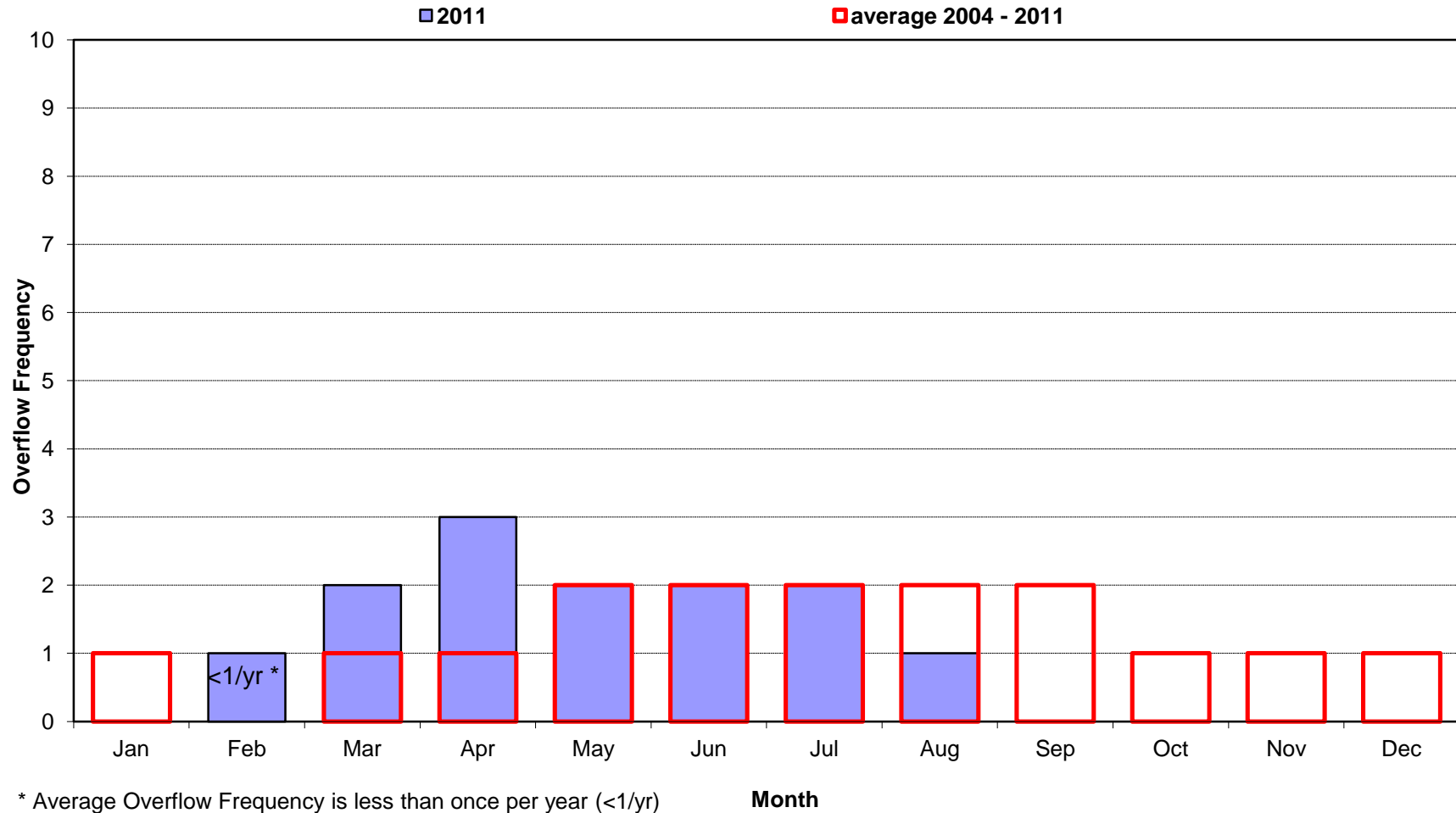
Date	Num of Overflows	Storm <sup>(1)</sup> Total (in.)	Hours of Rainfall	Maximum Storm Intensity (in./hr.)	Volume of Overflow (MG)	Duration of Overflow (hrs.)
7/1/11						
7/2/11						
7/3/11		0.18	2	0.17	none	none
7/4/11	1	0.93	4	0.78	0.20	2
7/5/11						
7/6/11		0.31	5	0.12	none	none
7/7/11						
7/8/11	1	1.73	11	0.66	0.23	6
7/9/11						
7/10/11						
7/11/11						
7/12/11						
7/13/11		0.01	1	0.01	none	none
7/14/11						
7/15/11						
7/16/11						
7/17/11						
7/18/11						
7/19/11						
7/20/11						
7/21/11						
7/22/11						
7/23/11		0.03	2	0.02	none	none
7/24/11						
7/25/11		0.41	5	0.21	none	none
7/26/11						
7/27/11						
7/28/11						
7/29/11						
7/30/11						
7/31/11		0.03	1	0.03	none	none

**MONTH SUMMARY**

Num of Overflows	Total Rain	Total Hours	Max Intensity	Total Volume	Total Duration
2	3.63	31	0.78	0.43	8

(1) Storm Total (in) data from National Weather Service, Wakefield Office, Richmond International Airport.

City of Richmond, Virginia  
Overflow Frequency by Month  
CSO28 - W'Burg Road 2004-2011



**CSO31 - Oakwood Cem**  
**Rainfall and Overflow Model Summary**  
**Current Month: July 2011**

Date	Num of Overflows	Storm <sup>(1)</sup> Total (in.)	Hours of Rainfall	Maximum Storm Intensity (in./hr.)	Volume of Overflow (MG)	Duration of Overflow (hrs.)
7/1/11						
7/2/11						
7/3/11		0.18	2	0.17	none	none
7/4/11	1	0.93	4	0.78	0.23	2
7/5/11						
7/6/11		0.31	5	0.12	none	none
7/7/11						
7/8/11	1	1.73	11	0.66	0.17	6
7/9/11						
7/10/11						
7/11/11						
7/12/11						
7/13/11		0.01	1	0.01	none	none
7/14/11						
7/15/11						
7/16/11						
7/17/11						
7/18/11						
7/19/11						
7/20/11						
7/21/11						
7/22/11						
7/23/11		0.03	2	0.02	none	none
7/24/11						
7/25/11		0.41	5	0.21	none	none
7/26/11						
7/27/11						
7/28/11						
7/29/11						
7/30/11						
7/31/11		0.03	1	0.03	none	none

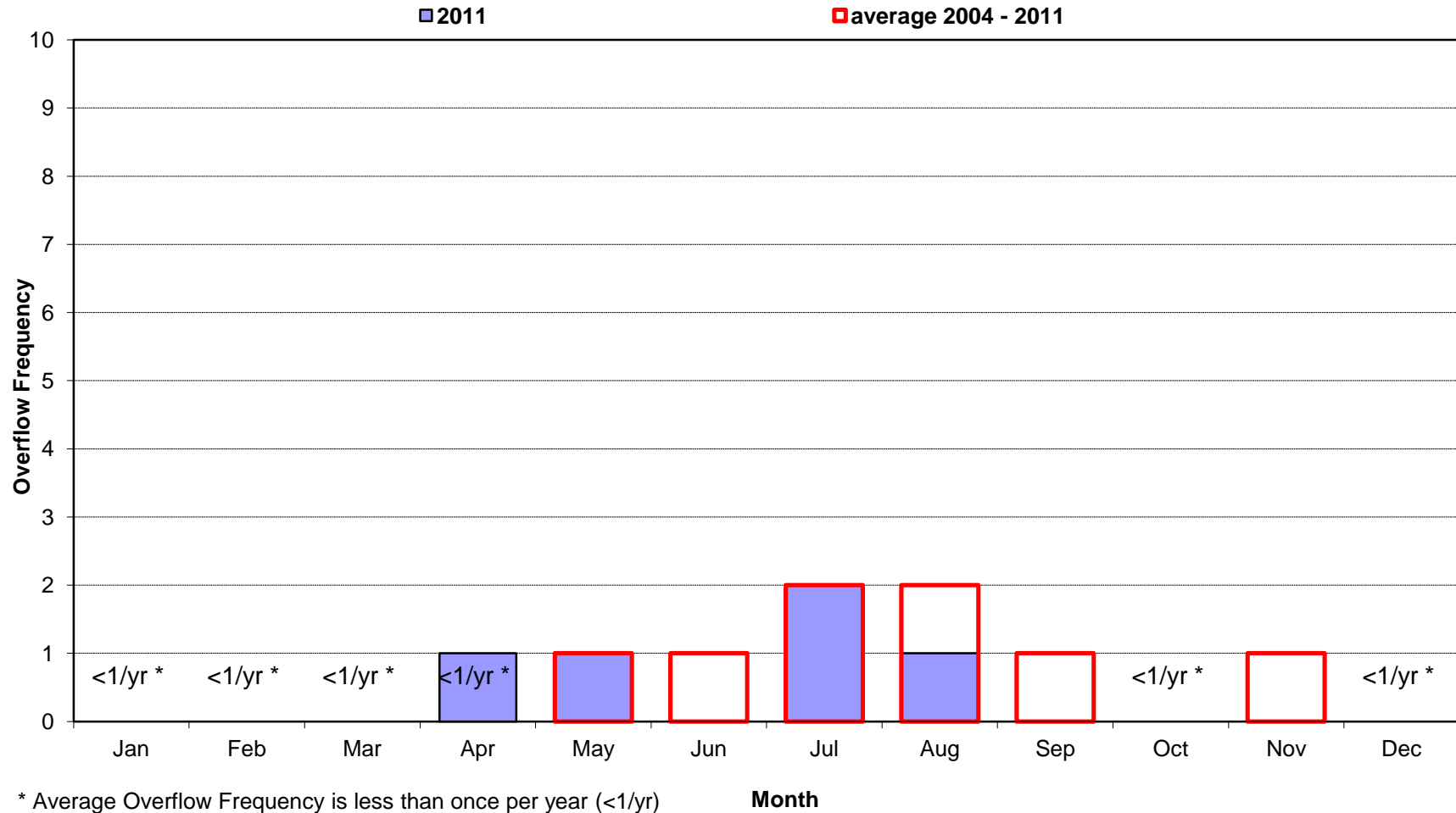
**MONTH SUMMARY**

Num of Overflows	Total Rain	Total Hours	Max Intensity	Total Volume	Total Duration
2	3.63	31	0.78	0.40	8

(1) Storm Total (in) data from National Weather Service, Wakefield Office, Richmond International Airport.

City of Richmond, Virginia  
Overflow Frequency by Month

CSO31 - Oakwood Cem 2004-2011



## CSO33 - Shields Lake

### Rainfall and Overflow Model Summary

**Current Month: July 2011**

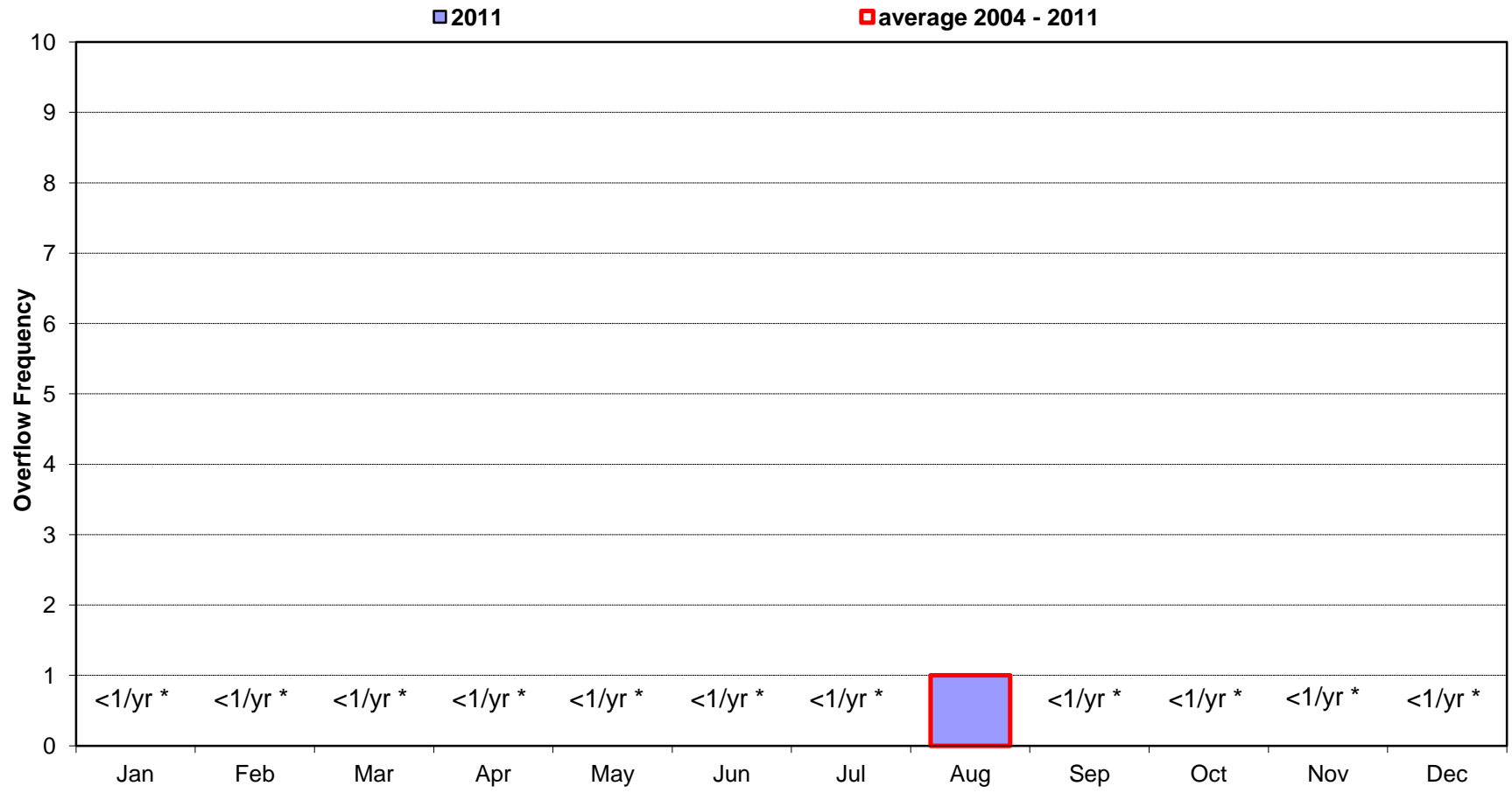
Date	Num of Overflows	Storm <sup>(1)</sup> Total (in.)	Hours of Rainfall	Maximum Storm Intensity (in./hr.)	Volume of Overflow (MG)	Duration of Overflow (hrs.)
7/1/11						
7/2/11						
7/3/11		0.18	2	0.17	none	none
7/4/11		0.93	4	0.78	none	none
7/5/11						
7/6/11		0.31	5	0.12	none	none
7/7/11						
7/8/11		1.73	11	0.66	none	none
7/9/11						
7/10/11						
7/11/11						
7/12/11						
7/13/11		0.01	1	0.01	none	none
7/14/11						
7/15/11						
7/16/11						
7/17/11						
7/18/11						
7/19/11						
7/20/11						
7/21/11						
7/22/11						
7/23/11		0.03	2	0.02	none	none
7/24/11						
7/25/11		0.41	5	0.21	none	none
7/26/11						
7/27/11						
7/28/11						
7/29/11						
7/30/11						
7/31/11		0.03	1	0.03	none	none

#### MONTH SUMMARY

Num of Overflows	Total Rain	Total Hours	Max Intensity	Total Volume	Total Duration
	3.63	31	0.78		

(1) Storm Total (in) data from National Weather Service, Wakefield Office, Richmond International Airport.

City of Richmond, Virginia  
Overflow Frequency by Month  
CSO33 - Shields Lake 2004-2011



\* Average Overflow Frequency is less than once per year (<1/yr)

Month

**CSO34 - 19th & Dock**

**Rainfall and Overflow Model Summary**

**Current Month: July 2011**

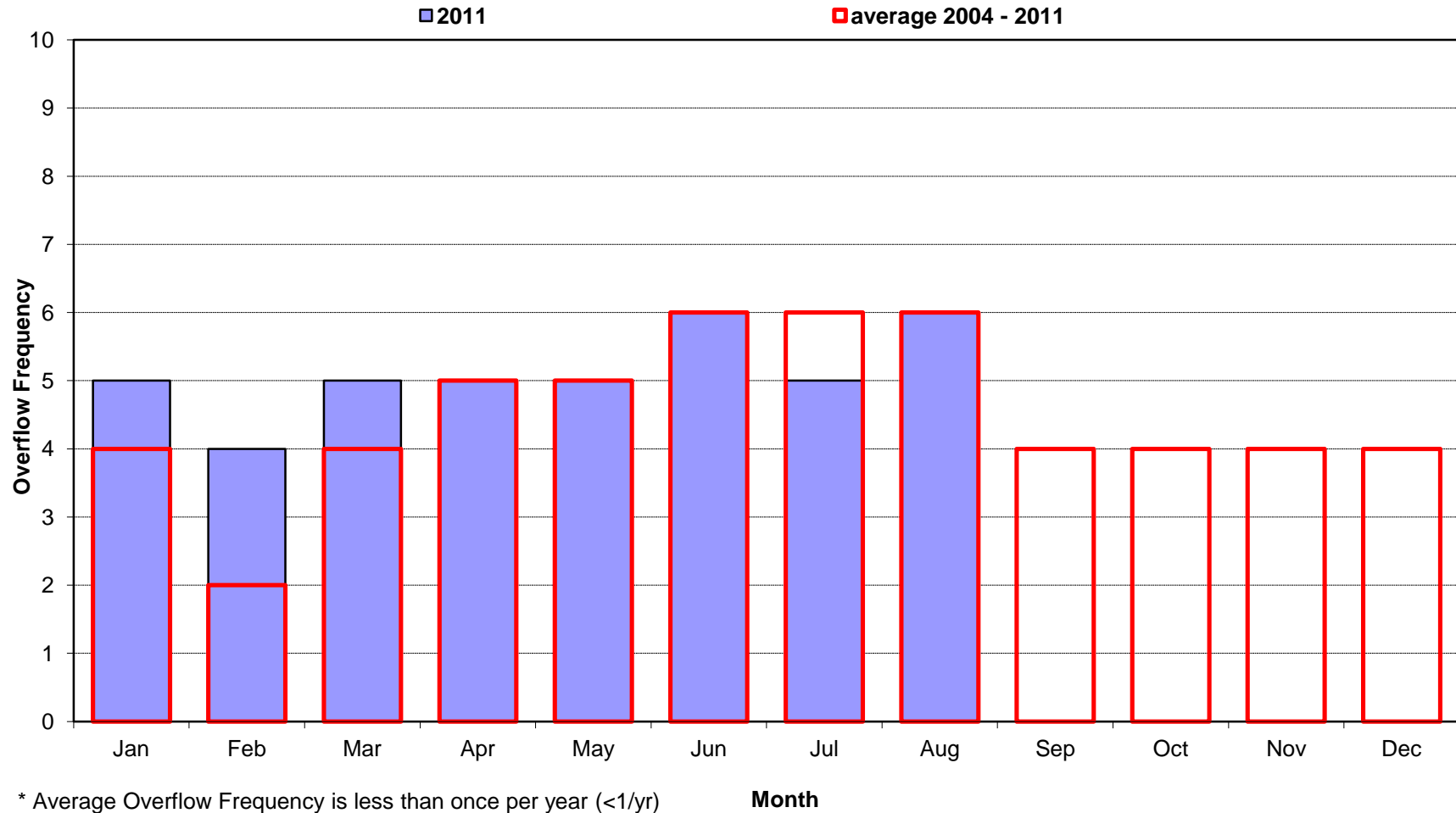
Date	Num of Overflows	Storm <sup>(1)</sup> Total (in.)	Hours of Rainfall	Maximum Storm Intensity (in./hr.)	Volume of Overflow (MG)	Duration of Overflow (hrs.)
7/1/11						
7/2/11						
7/3/11		0.18	2	0.17	none	none
7/4/11	2	0.93	4	0.78	2.22	5
7/5/11						
7/6/11	1	0.31	5	0.12	0.14	3
7/7/11						
7/8/11	1	1.73	11	0.66	3.63	9
7/9/11						
7/10/11						
7/11/11						
7/12/11						
7/13/11		0.01	1	0.01	none	none
7/14/11						
7/15/11						
7/16/11						
7/17/11						
7/18/11						
7/19/11						
7/20/11						
7/21/11						
7/22/11						
7/23/11		0.03	2	0.02	none	none
7/24/11						
7/25/11	1	0.41	5	0.21	0.41	4
7/26/11						
7/27/11						
7/28/11						
7/29/11						
7/30/11						
7/31/11		0.03	1	0.03	none	none

**MONTH SUMMARY**

Num of Overflows	Total Rain	Total Hours	Max Intensity	Total Volume	Total Duration
5	3.63	31	0.78	6.40	21

(1) Storm Total (in) data from National Weather Service, Wakefield Office, Richmond International Airport.

City of Richmond, Virginia  
Overflow Frequency by Month  
CSO34 - 19th & Dock 2004-2011



**CSO35 - 29th & Dock**

**Rainfall and Overflow Model Summary**

**Current Month: July 2011**

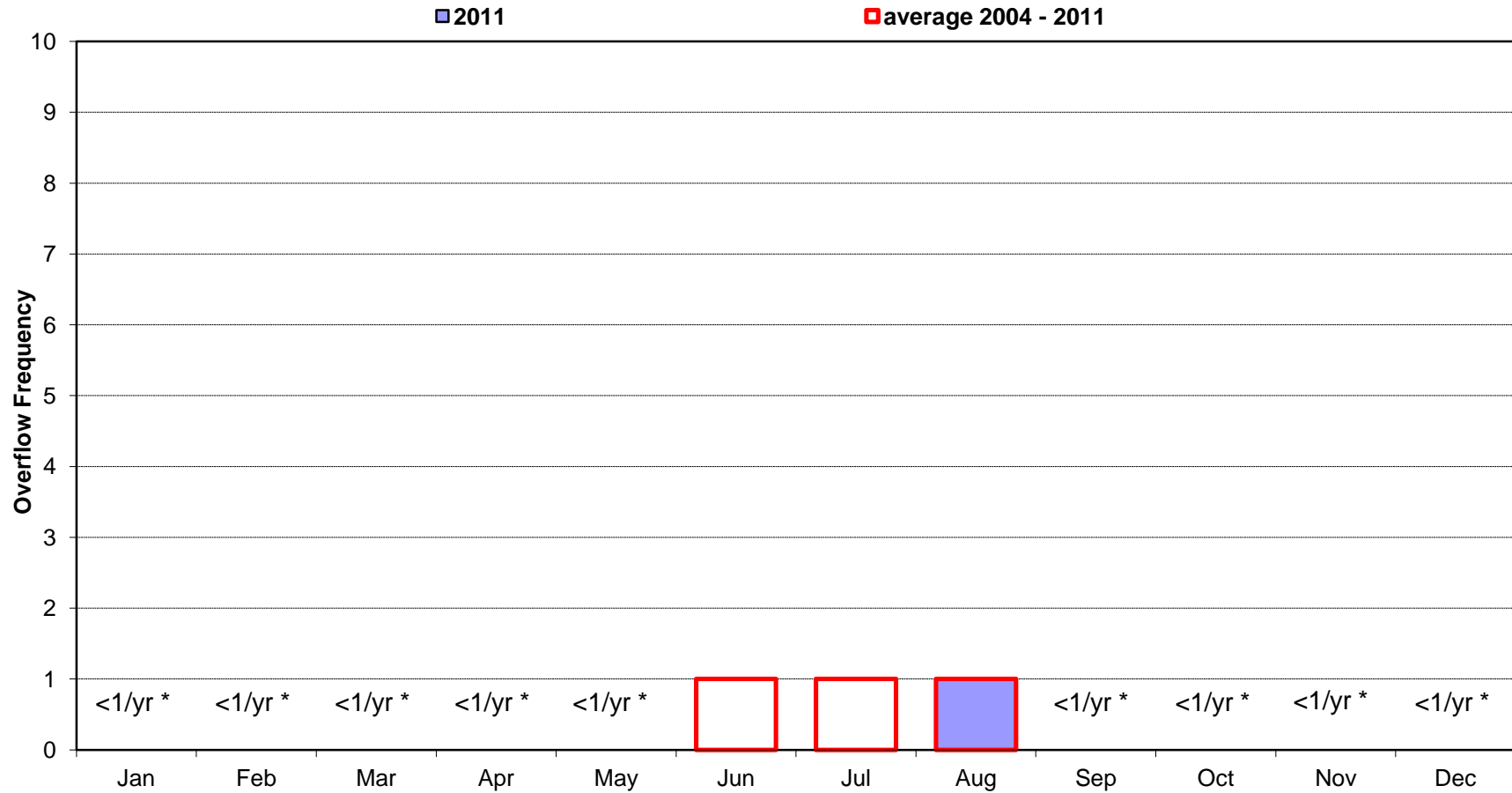
Date	Num of Overflows	Storm <sup>(1)</sup> Total (in.)	Hours of Rainfall	Maximum Storm Intensity (in./hr.)	Volume of Overflow (MG)	Duration of Overflow (hrs.)
7/1/11						
7/2/11						
7/3/11		0.18	2	0.17	none	none
7/4/11		0.93	4	0.78	none	none
7/5/11						
7/6/11		0.31	5	0.12	none	none
7/7/11						
7/8/11		1.73	11	0.66	none	none
7/9/11						
7/10/11						
7/11/11						
7/12/11						
7/13/11		0.01	1	0.01	none	none
7/14/11						
7/15/11						
7/16/11						
7/17/11						
7/18/11						
7/19/11						
7/20/11						
7/21/11						
7/22/11						
7/23/11		0.03	2	0.02	none	none
7/24/11						
7/25/11		0.41	5	0.21	none	none
7/26/11						
7/27/11						
7/28/11						
7/29/11						
7/30/11						
7/31/11		0.03	1	0.03	none	none

**MONTH SUMMARY**

Num of Overflows	Total Rain	Total Hours	Max Intensity	Total Volume	Total Duration
	3.63	31	0.78		

(1) Storm Total (in) data from National Weather Service, Wakefield Office, Richmond International Airport.

City of Richmond, Virginia  
Overflow Frequency by Month  
CSO35 - 29th & Dock 2004-2011



\* Average Overflow Frequency is less than once per year (<1/yr)

Month

**CSO39 - Gov't Road & Gillies**  
**Rainfall and Overflow Model Summary**  
**Current Month: July 2011**

Date	Num of Overflows	Storm <sup>(1)</sup> Total (in.)	Hours of Rainfall	Maximum Storm Intensity (in./hr.)	Volume of Overflow (MG)	Duration of Overflow (hrs.)
7/1/11						
7/2/11						
7/3/11		0.18	2	0.17	none	none
7/4/11	2	0.93	4	0.78	0.91	5
7/5/11						
7/6/11	1	0.31	5	0.12	0.03	2
7/7/11						
7/8/11	1	1.73	11	0.66	1.47	9
7/9/11						
7/10/11						
7/11/11						
7/12/11						
7/13/11		0.01	1	0.01	none	none
7/14/11						
7/15/11						
7/16/11						
7/17/11						
7/18/11						
7/19/11						
7/20/11						
7/21/11						
7/22/11						
7/23/11		0.03	2	0.02	none	none
7/24/11						
7/25/11	1	0.41	5	0.21	0.16	4
7/26/11						
7/27/11						
7/28/11						
7/29/11						
7/30/11						
7/31/11		0.03	1	0.03	none	none

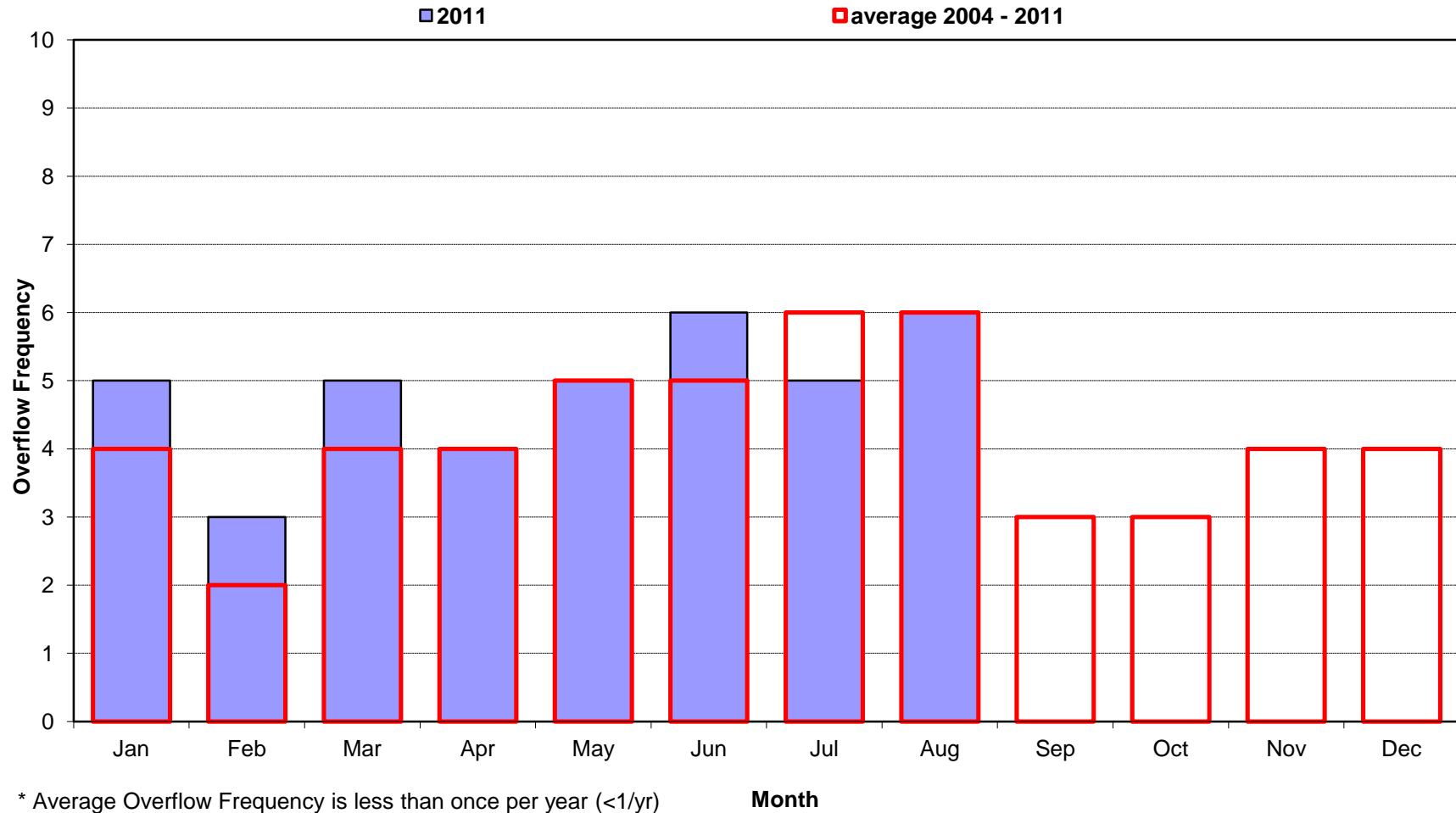
**MONTH SUMMARY**

Num of Overflows	Total Rain	Total Hours	Max Intensity	Total Volume	Total Duration
5	3.63	31	0.78	2.57	20

(1) Storm Total (in) data from National Weather Service, Wakefield Office, Richmond International Airport.

City of Richmond, Virginia  
Overflow Frequency by Month

CSO39 - Gov't Road & Gillies 2004-2011



## CSO40 - Diff User

### Rainfall and Overflow Model Summary

**Current Month: July 2011**

Date	Num of Overflows	Storm <sup>(1)</sup> Total (in.)	Hours of Rainfall	Maximum Storm Intensity (in./hr.)	Volume of Overflow (MG)	Duration of Overflow (hrs.)
7/1/11						
7/2/11						
7/3/11		0.18	2	0.17	none	none
7/4/11	2	0.93	4	0.78	4.43	6
7/5/11						
7/6/11	1	0.31	5	0.12	0.27	4
7/7/11						
7/8/11	1	1.73	11	0.66	8.00	11
7/9/11						
7/10/11						
7/11/11						
7/12/11						
7/13/11		0.01	1	0.01	none	none
7/14/11						
7/15/11						
7/16/11						
7/17/11						
7/18/11						
7/19/11						
7/20/11						
7/21/11						
7/22/11						
7/23/11		0.03	2	0.02	none	none
7/24/11						
7/25/11	1	0.41	5	0.21	0.75	5
7/26/11						
7/27/11						
7/28/11						
7/29/11						
7/30/11						
7/31/11		0.03	1	0.03	none	none

#### MONTH SUMMARY

Num of Overflows	Total Rain	Total Hours	Max Intensity	Total Volume	Total Duration
5	3.63	31	0.78	13.44	26

(1) Storm Total (in) data from National Weather Service, Wakefield Office, Richmond International Airport.

City of Richmond, Virginia  
Overflow Frequency by Month  
CSO40 - Diff User 2004-2011

