

CSO02 - Orleans

Rainfall and Overflow Model Summary

Current Month: September 2011

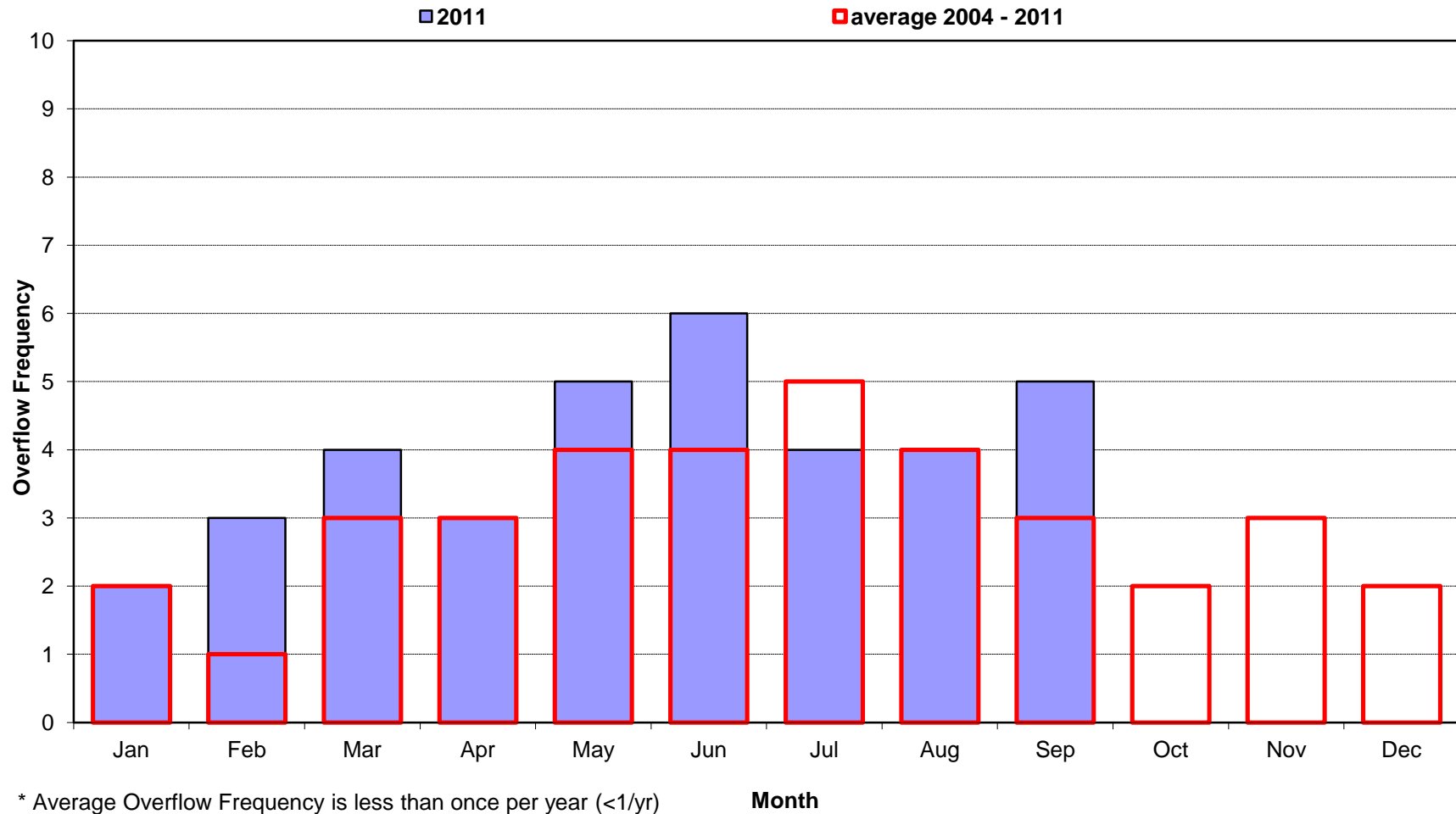
Date	Num of Overflows	Storm ⁽¹⁾ Total (in.)	Hours of Rainfall	Maximum Storm Intensity (in./hr.)	Volume of Overflow (MG)	Duration of Overflow (hrs.)
9/1/11						
9/2/11						
9/3/11						
9/4/11						
9/5/11						
9/6/11	1	4.78	45	1.09	0.05	13
9/7/11	1				0.87	16
9/8/11	1	1.28	2	1.10	0.34	2
9/9/11						
9/10/11						
9/11/11						
9/12/11						
9/13/11						
9/14/11						
9/15/11						
9/16/11						
9/17/11		0.04	2	0.03	none	none
9/18/11						
9/19/11						
9/20/11						
9/21/11	1	0.67	6	0.64	0.15	2
9/22/11						
9/23/11		0.47	15	0.15	none	none
9/24/11		0.03	2	0.02	none	none
9/25/11						
9/26/11						
9/27/11	1	1.57	8	1.01	0.39	8
9/28/11		0.08	1	0.08	none	none
9/29/11						
9/30/11		0.03	1	0.03	none	none

MONTH SUMMARY

Num of Overflows	Total Rain	Total Hours	Max Intensity	Total Volume	Total Duration
5	8.95	82	1.10	1.80	41

(1) Storm Total (in) data from National Weather Service, Wakefield Office, Richmond International Airport.

City of Richmond, Virginia
Overflow Frequency by Month
CSO02 - Orleans 2004-2011



CSO03 - Nicholson

Rainfall and Overflow Model Summary

Current Month: September 2011

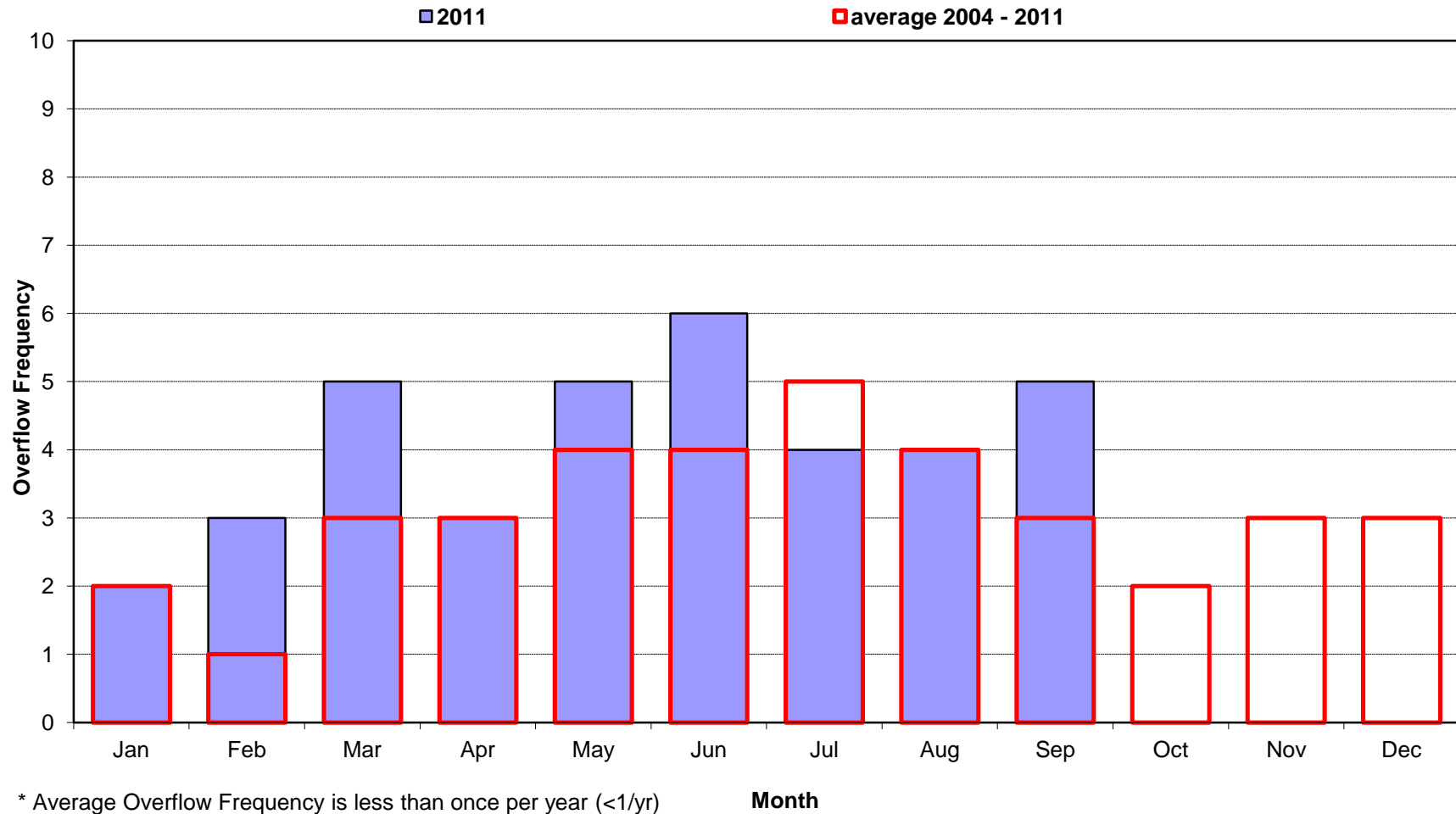
Date	Num of Overflows	Storm ⁽¹⁾ Total (in.)	Hours of Rainfall	Maximum Storm Intensity (in./hr.)	Volume of Overflow (MG)	Duration of Overflow (hrs.)
9/1/11						
9/2/11						
9/3/11						
9/4/11						
9/5/11						
9/6/11	1	4.78	45	1.09	0.03	13
9/7/11	1				0.62	16
9/8/11	1	1.28	2	1.10	0.27	2
9/9/11						
9/10/11						
9/11/11						
9/12/11						
9/13/11						
9/14/11						
9/15/11						
9/16/11						
9/17/11		0.04	2	0.03	none	none
9/18/11						
9/19/11						
9/20/11						
9/21/11	1	0.67	6	0.64	0.11	2
9/22/11						
9/23/11		0.47	15	0.15	none	none
9/24/11		0.03	2	0.02	none	none
9/25/11						
9/26/11						
9/27/11	1	1.57	8	1.01	0.29	8
9/28/11		0.08	1	0.08	none	none
9/29/11						
9/30/11		0.03	1	0.03	none	none

MONTH SUMMARY

Num of Overflows	Total Rain	Total Hours	Max Intensity	Total Volume	Total Duration
5	8.95	82	1.10	1.32	41

(1) Storm Total (in) data from National Weather Service, Wakefield Office, Richmond International Airport.

City of Richmond, Virginia
Overflow Frequency by Month
CSO03 - Nicholson 2004-2011



CSO04 - Bloody Run
Rainfall and Overflow Model Summary
Current Month: September 2011

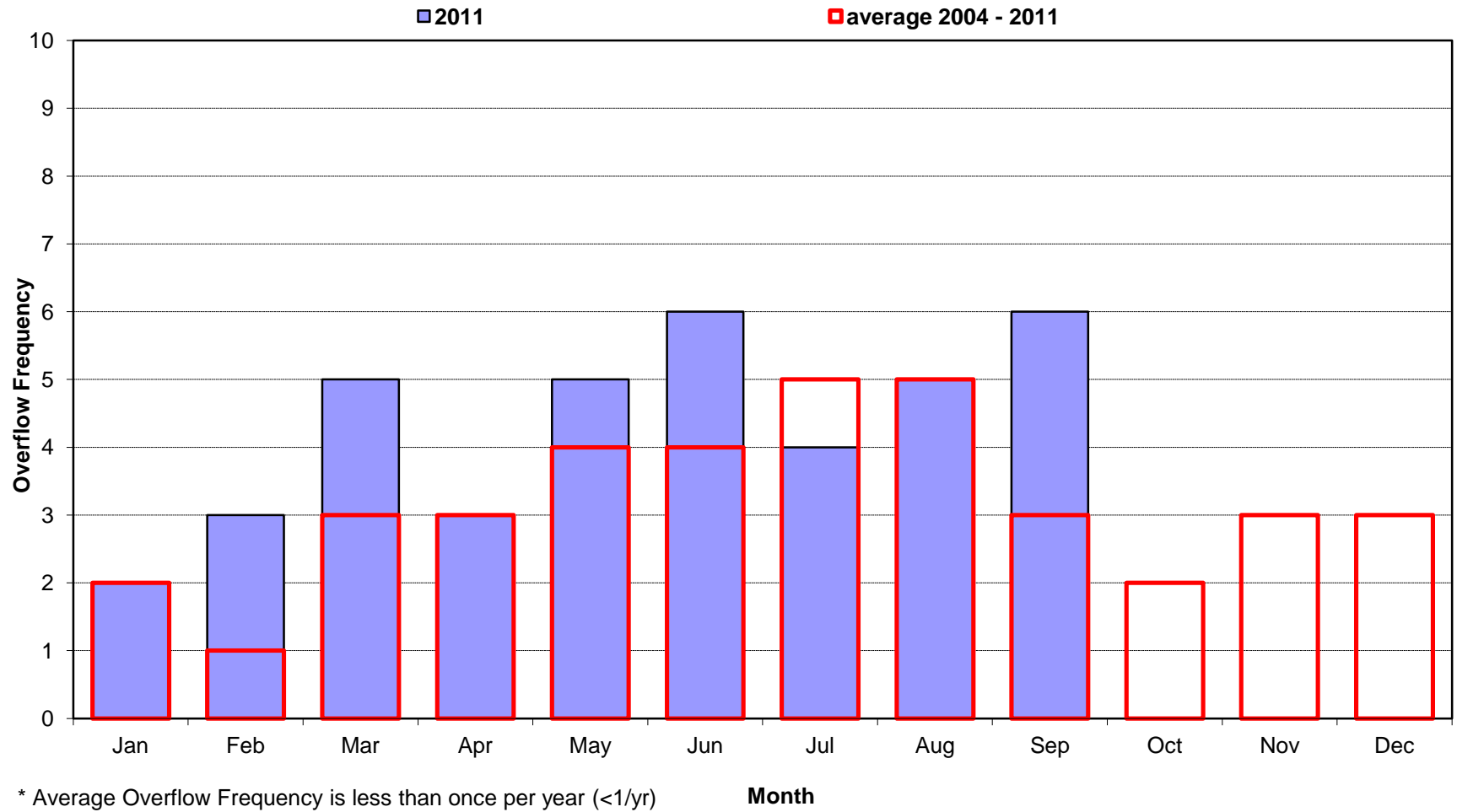
Date	Num of Overflows	Storm ⁽¹⁾ Total (in.)	Hours of Rainfall	Maximum Storm Intensity (in./hr.)	Volume of Overflow (MG)	Duration of Overflow (hrs.)
9/1/11						
9/2/11						
9/3/11						
9/4/11						
9/5/11						
9/6/11	1	4.78	45	1.09	0.19	13
9/7/11	1				2.99	20
9/8/11	1	1.28	2	1.10	1.21	3
9/9/11						
9/10/11						
9/11/11						
9/12/11						
9/13/11						
9/14/11						
9/15/11						
9/16/11						
9/17/11		0.04	2	0.03	none	none
9/18/11						
9/19/11						
9/20/11						
9/21/11	1	0.67	6	0.64	0.51	2
9/22/11						
9/23/11	1	0.47	15	0.15	0.01	2
9/24/11		0.03	2	0.02	none	none
9/25/11						
9/26/11						
9/27/11	1	1.57	8	1.01	1.34	8
9/28/11		0.08	1	0.08	none	none
9/29/11						
9/30/11		0.03	1	0.03	none	none

MONTH SUMMARY

Num of Overflows	Total Rain	Total Hours	Max Intensity	Total Volume	Total Duration
6	8.95	82	1.10	6.24	48

(1) Storm Total (in) data from National Weather Service, Wakefield Office, Richmond International Airport.

City of Richmond, Virginia
Overflow Frequency by Month
CS004 - Bloody Run 2004-2011



* Average Overflow Frequency is less than once per year (<1/yr)

CSO05 - Peach Street
Rainfall and Overflow Model Summary
Current Month: September 2011

Date	Num of Overflows	Storm ⁽¹⁾ Total (in.)	Hours of Rainfall	Maximum Storm Intensity (in./hr.)	Volume of Overflow (MG)	Duration of Overflow (hrs.)
9/1/11						
9/2/11						
9/3/11						
9/4/11						
9/5/11						
9/6/11		4.78	45	1.09	none	none
9/7/11	1				0.15	2
9/8/11	1	1.28	2	1.10	0.08	2
9/9/11						
9/10/11						
9/11/11						
9/12/11						
9/13/11						
9/14/11						
9/15/11						
9/16/11						
9/17/11		0.04	2	0.03	none	none
9/18/11						
9/19/11						
9/20/11						
9/21/11		0.67	6	0.64	none	none
9/22/11						
9/23/11		0.47	15	0.15	none	none
9/24/11		0.03	2	0.02	none	none
9/25/11						
9/26/11						
9/27/11	1	1.57	8	1.01	0.07	2
9/28/11		0.08	1	0.08	none	none
9/29/11						
9/30/11		0.03	1	0.03	none	none

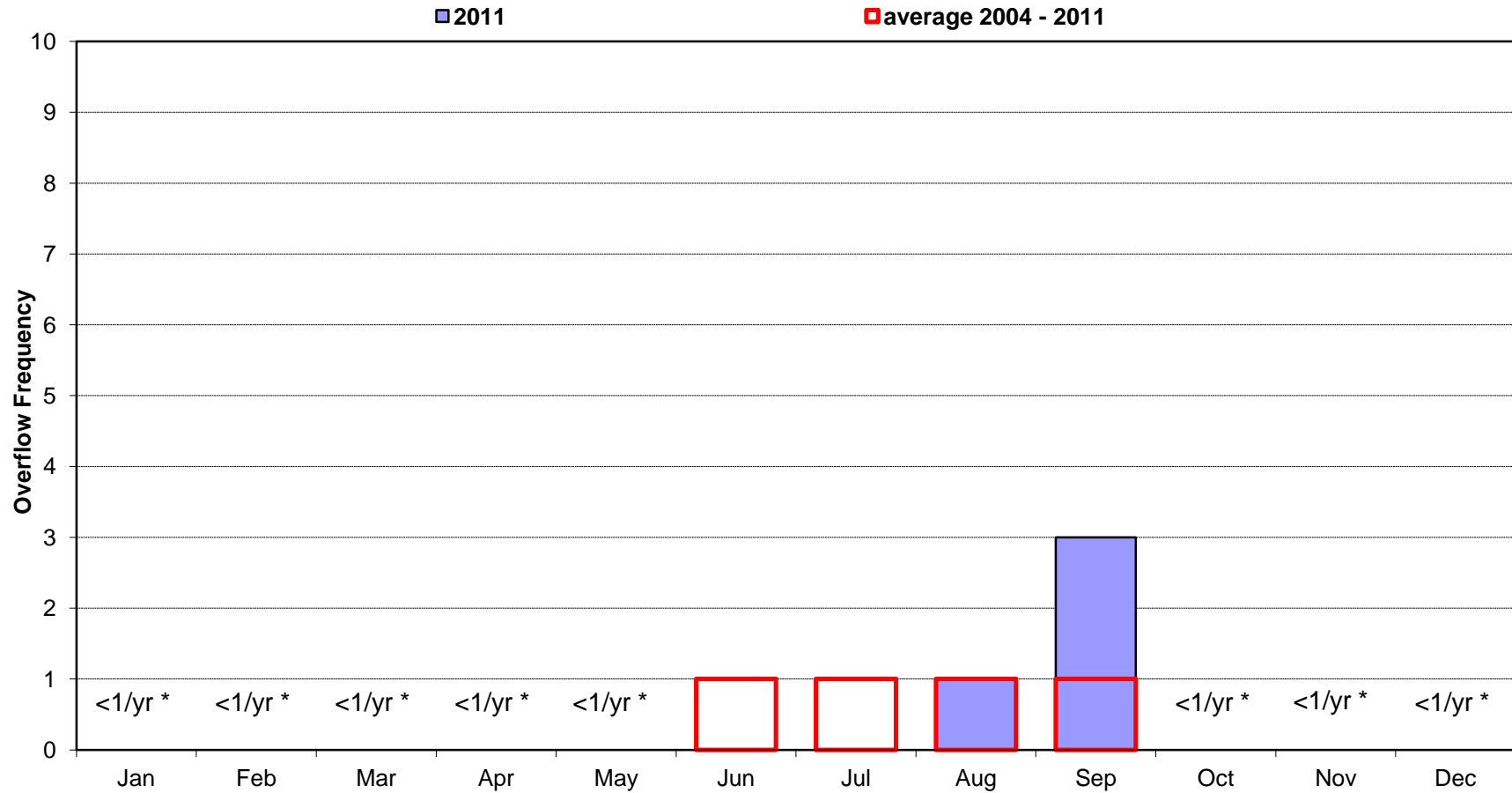
MONTH SUMMARY

Num of Overflows	Total Rain	Total Hours	Max Intensity	Total Volume	Total Duration
3	8.95	82	1.10	0.29	6

(1) Storm Total (in) data from National Weather Service, Wakefield Office, Richmond International Airport.

City of Richmond, Virginia
Overflow Frequency by Month

CSO05 - Peach Street 2004-2011



* Average Overflow Frequency is less than once per year (<1/yr)

Month

CSO06 - Shockoe

Rainfall and Overflow Model Summary

Current Month: September 2011

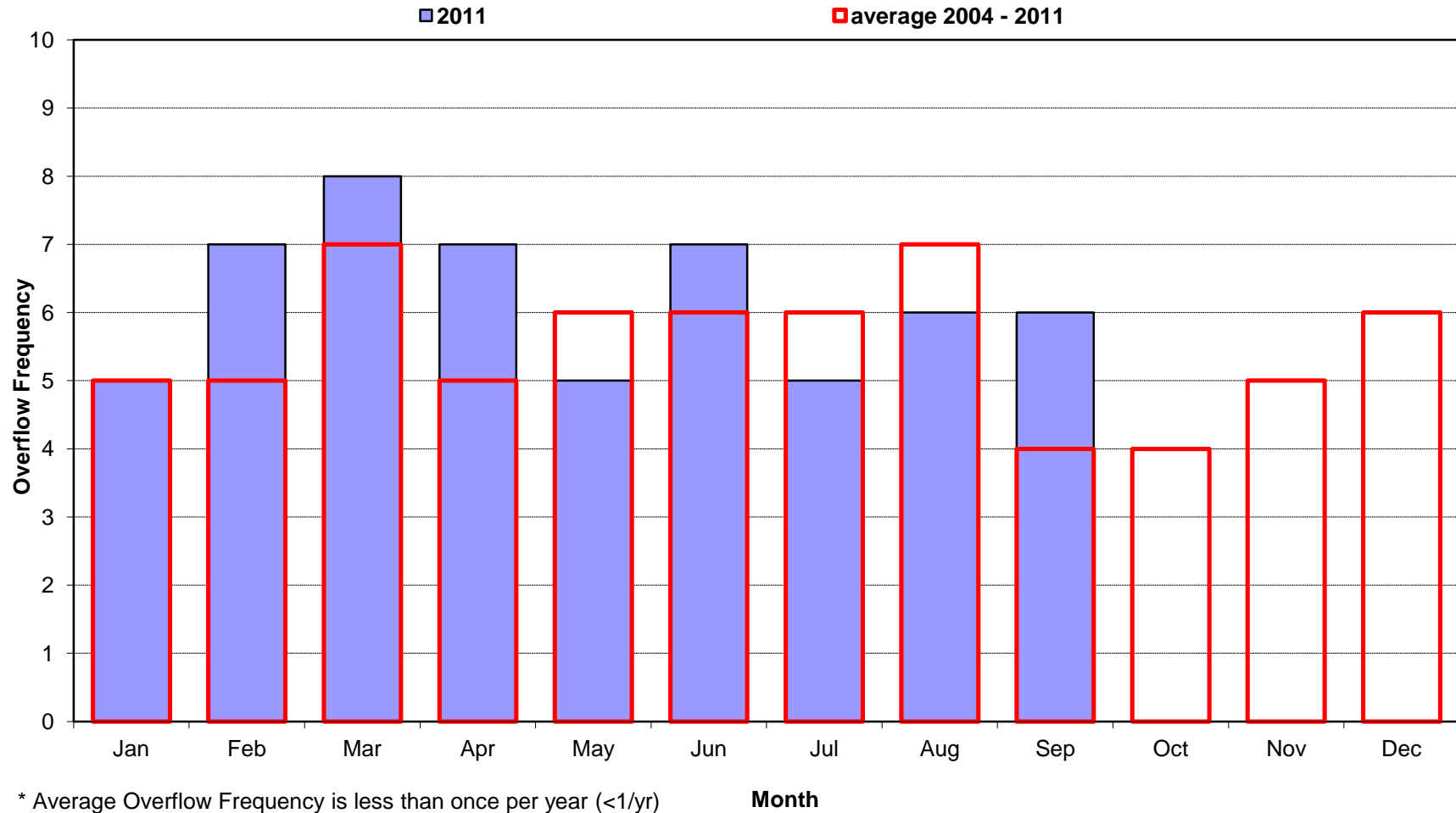
Date	Num of Overflows	Storm ⁽¹⁾ Total (in.)	Hours of Rainfall	Maximum Storm Intensity (in./hr.)	Volume of Overflow (MG)	Duration of Overflow (hrs.)
9/1/11						
9/2/11						
9/3/11						
9/4/11						
9/5/11						
9/6/11	1	4.78	45	1.09	492.35	50
9/7/11						
9/8/11	1	1.28	2	1.10	119.67	6
9/9/11						
9/10/11						
9/11/11						
9/12/11						
9/13/11						
9/14/11						
9/15/11						
9/16/11						
9/17/11		0.04	2	0.03	none	none
9/18/11						
9/19/11						
9/20/11						
9/21/11	1	0.67	6	0.64	2.38	4
9/22/11						
9/23/11	1	0.47	15	0.15	0.83	15
9/24/11		0.03	2	0.02	none	none
9/25/11						
9/26/11						
9/27/11	1	1.57	8	1.01	98.89	10
9/28/11	1	0.08	1	0.08	0.18	3
9/29/11						
9/30/11		0.03	1	0.03	none	none

MONTH SUMMARY

Num of Overflows	Total Rain	Total Hours	Max Intensity	Total Volume	Total Duration
6	8.95	82	1.10	714.30	88

(1) Storm Total (in) data from National Weather Service, Wakefield Office, Richmond International Airport.

City of Richmond, Virginia
Overflow Frequency by Month
CSO06 - Shockoe 2004-2011



CSO07 - Byrd

Rainfall and Overflow Model Summary

Current Month: September 2011

Date	Num of Overflows	Storm ⁽¹⁾ Total (in.)	Hours of Rainfall	Maximum Storm Intensity (in./hr.)	Volume of Overflow (MG)	Duration of Overflow (hrs.)
9/1/11						
9/2/11						
9/3/11						
9/4/11						
9/5/11						
9/6/11		4.78	45	1.09	none	none
9/7/11						
9/8/11		1.28	2	1.10	none	none
9/9/11						
9/10/11						
9/11/11						
9/12/11						
9/13/11						
9/14/11						
9/15/11						
9/16/11						
9/17/11		0.04	2	0.03	none	none
9/18/11						
9/19/11						
9/20/11						
9/21/11		0.67	6	0.64	none	none
9/22/11						
9/23/11		0.47	15	0.15	none	none
9/24/11		0.03	2	0.02	none	none
9/25/11						
9/26/11						
9/27/11		1.57	8	1.01	none	none
9/28/11		0.08	1	0.08	none	none
9/29/11						
9/30/11		0.03	1	0.03	none	none

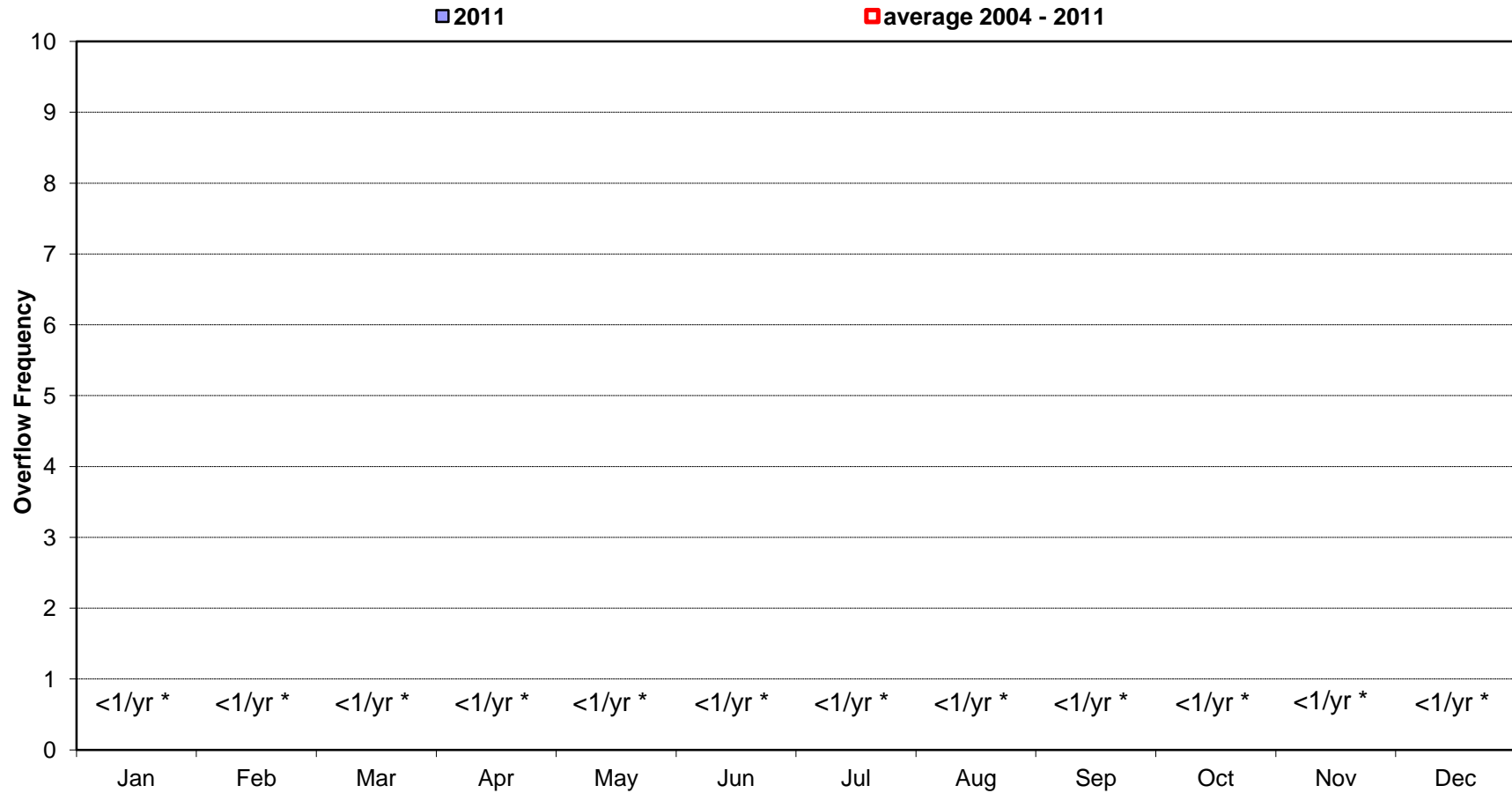
MONTH SUMMARY

Num of Overflows	Total Rain	Total Hours	Max Intensity	Total Volume	Total Duration
	8.95	82	1.10		

(1) Storm Total (in) data from National Weather Service, Wakefield Office, Richmond International Airport.

City of Richmond, Virginia
Overflow Frequency by Month

CSO07 - Byrd 2004-2011



* Average Overflow Frequency is less than once per year (<1/yr)

Month

CSO08 - 6th Street

Rainfall and Overflow Model Summary

Current Month: September 2011

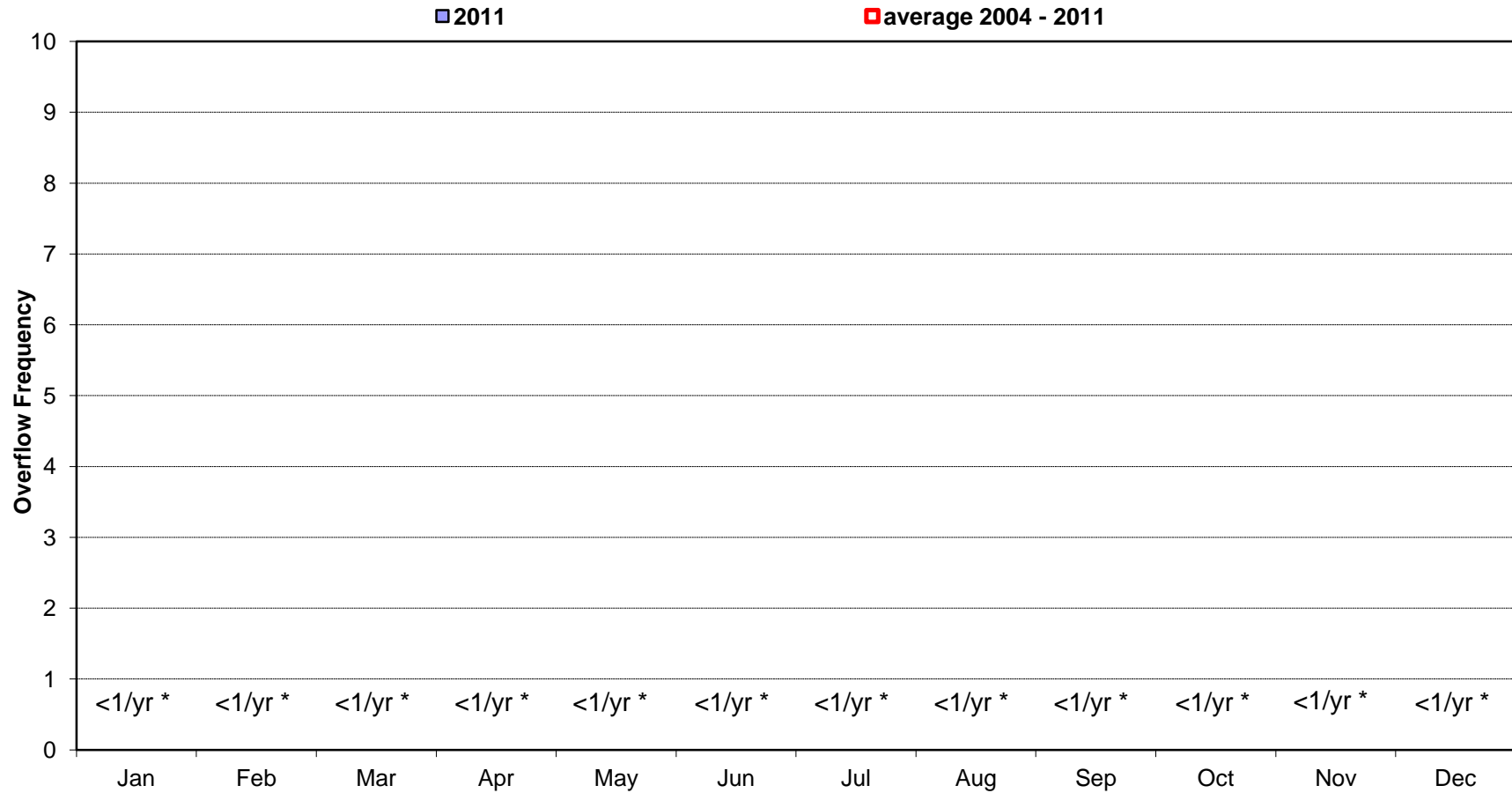
Date	Num of Overflows	Storm ⁽¹⁾ Total (in.)	Hours of Rainfall	Maximum Storm Intensity (in./hr.)	Volume of Overflow (MG)	Duration of Overflow (hrs.)
9/1/11						
9/2/11						
9/3/11						
9/4/11						
9/5/11						
9/6/11		4.78	45	1.09	none	none
9/7/11						
9/8/11		1.28	2	1.10	none	none
9/9/11						
9/10/11						
9/11/11						
9/12/11						
9/13/11						
9/14/11						
9/15/11						
9/16/11						
9/17/11		0.04	2	0.03	none	none
9/18/11						
9/19/11						
9/20/11						
9/21/11		0.67	6	0.64	none	none
9/22/11						
9/23/11		0.47	15	0.15	none	none
9/24/11		0.03	2	0.02	none	none
9/25/11						
9/26/11						
9/27/11		1.57	8	1.01	none	none
9/28/11		0.08	1	0.08	none	none
9/29/11						
9/30/11		0.03	1	0.03	none	none

MONTH SUMMARY

Num of Overflows	Total Rain	Total Hours	Max Intensity	Total Volume	Total Duration
	8.95	82	1.10		

(1) Storm Total (in) data from National Weather Service, Wakefield Office, Richmond International Airport.

City of Richmond, Virginia
Overflow Frequency by Month
CSO08 - 6th Street 2004-2011



* Average Overflow Frequency is less than once per year (<1/yr)

Month

CSO09 - 7th Street

Rainfall and Overflow Model Summary

Current Month: September 2011

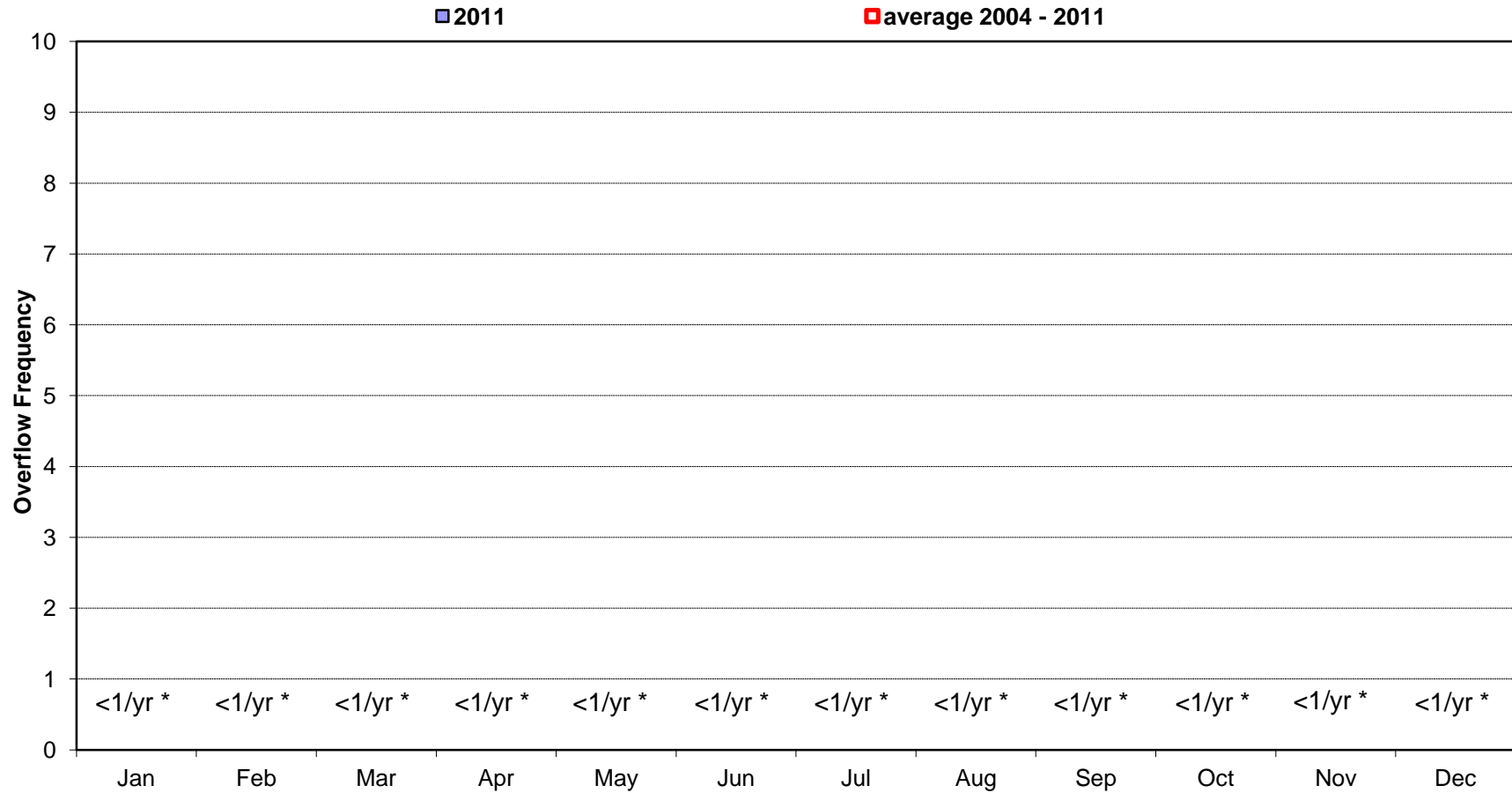
Date	Num of Overflows	Storm ⁽¹⁾ Total (in.)	Hours of Rainfall	Maximum Storm Intensity (in./hr.)	Volume of Overflow (MG)	Duration of Overflow (hrs.)
9/1/11						
9/2/11						
9/3/11						
9/4/11						
9/5/11						
9/6/11		4.78	45	1.09	none	none
9/7/11						
9/8/11		1.28	2	1.10	none	none
9/9/11						
9/10/11						
9/11/11						
9/12/11						
9/13/11						
9/14/11						
9/15/11						
9/16/11						
9/17/11		0.04	2	0.03	none	none
9/18/11						
9/19/11						
9/20/11						
9/21/11		0.67	6	0.64	none	none
9/22/11						
9/23/11		0.47	15	0.15	none	none
9/24/11		0.03	2	0.02	none	none
9/25/11						
9/26/11						
9/27/11		1.57	8	1.01	none	none
9/28/11		0.08	1	0.08	none	none
9/29/11						
9/30/11		0.03	1	0.03	none	none

MONTH SUMMARY

Num of Overflows	Total Rain	Total Hours	Max Intensity	Total Volume	Total Duration
	8.95	82	1.10		

(1) Storm Total (in) data from National Weather Service, Wakefield Office, Richmond International Airport.

City of Richmond, Virginia
Overflow Frequency by Month
CSO09 - 7th Street 2004-2011



* Average Overflow Frequency is less than once per year (<1/yr)

Month

CSO10 - Gambles Hill

Rainfall and Overflow Model Summary

Current Month: September 2011

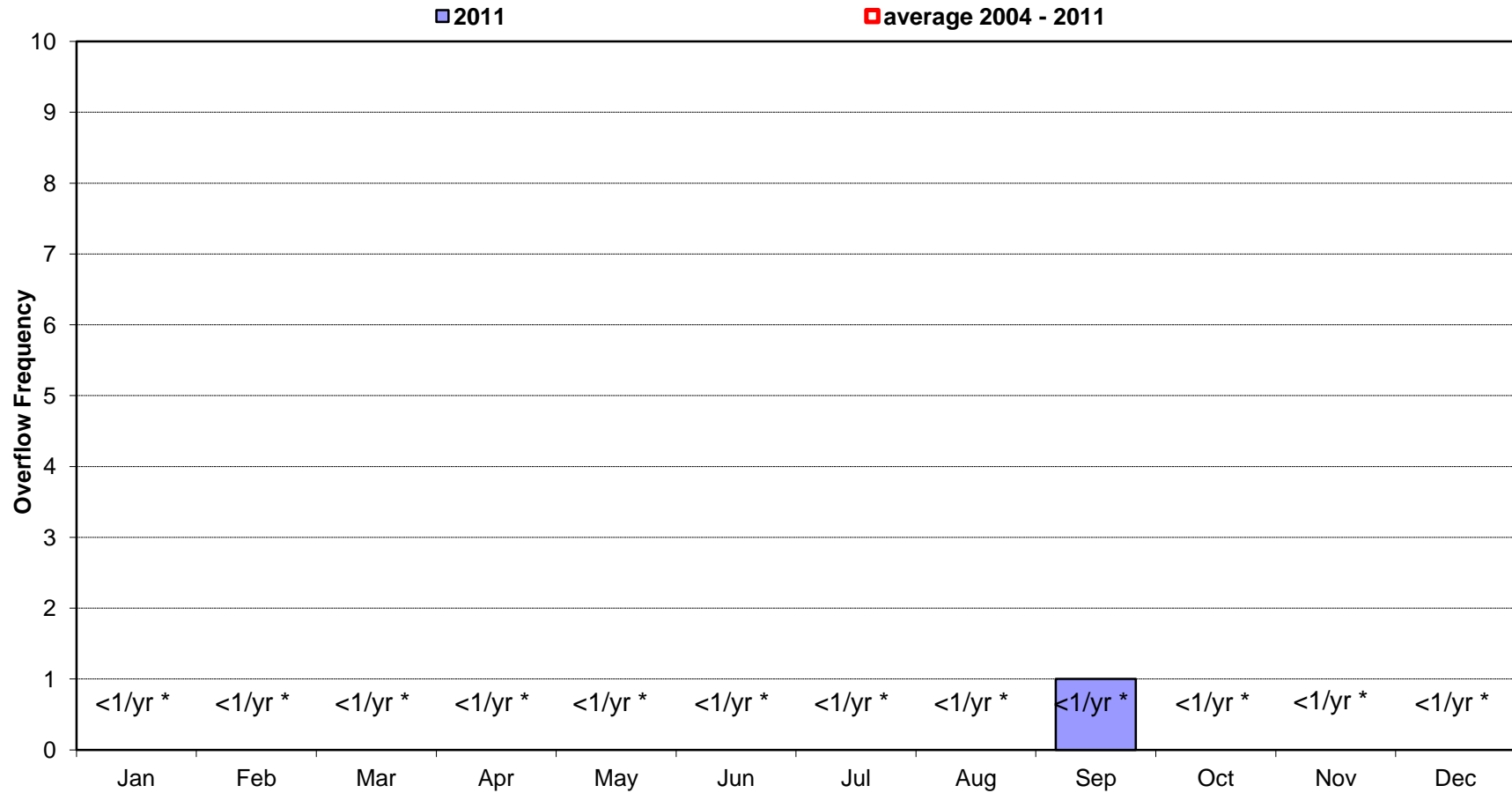
Date	Num of Overflows	Storm ⁽¹⁾ Total (in.)	Hours of Rainfall	Maximum Storm Intensity (in./hr.)	Volume of Overflow (MG)	Duration of Overflow (hrs.)
9/1/11						
9/2/11						
9/3/11						
9/4/11						
9/5/11						
9/6/11		4.78	45	1.09	none	none
9/7/11	1				0.03	2
9/8/11		1.28	2	1.10	none	none
9/9/11						
9/10/11						
9/11/11						
9/12/11						
9/13/11						
9/14/11						
9/15/11						
9/16/11						
9/17/11		0.04	2	0.03	none	none
9/18/11						
9/19/11						
9/20/11						
9/21/11		0.67	6	0.64	none	none
9/22/11						
9/23/11		0.47	15	0.15	none	none
9/24/11		0.03	2	0.02	none	none
9/25/11						
9/26/11						
9/27/11		1.57	8	1.01	none	none
9/28/11		0.08	1	0.08	none	none
9/29/11						
9/30/11		0.03	1	0.03	none	none

MONTH SUMMARY

Num of Overflows	Total Rain	Total Hours	Max Intensity	Total Volume	Total Duration
1	8.95	82	1.10	0.03	2

(1) Storm Total (in) data from National Weather Service, Wakefield Office, Richmond International Airport.

City of Richmond, Virginia
Overflow Frequency by Month
CSO10 - Gambles Hill 2004-2011



* Average Overflow Frequency is less than once per year (<1/yr)

Month

CSO11 - Park Hydro
Rainfall and Overflow Model Summary
Current Month: September 2011

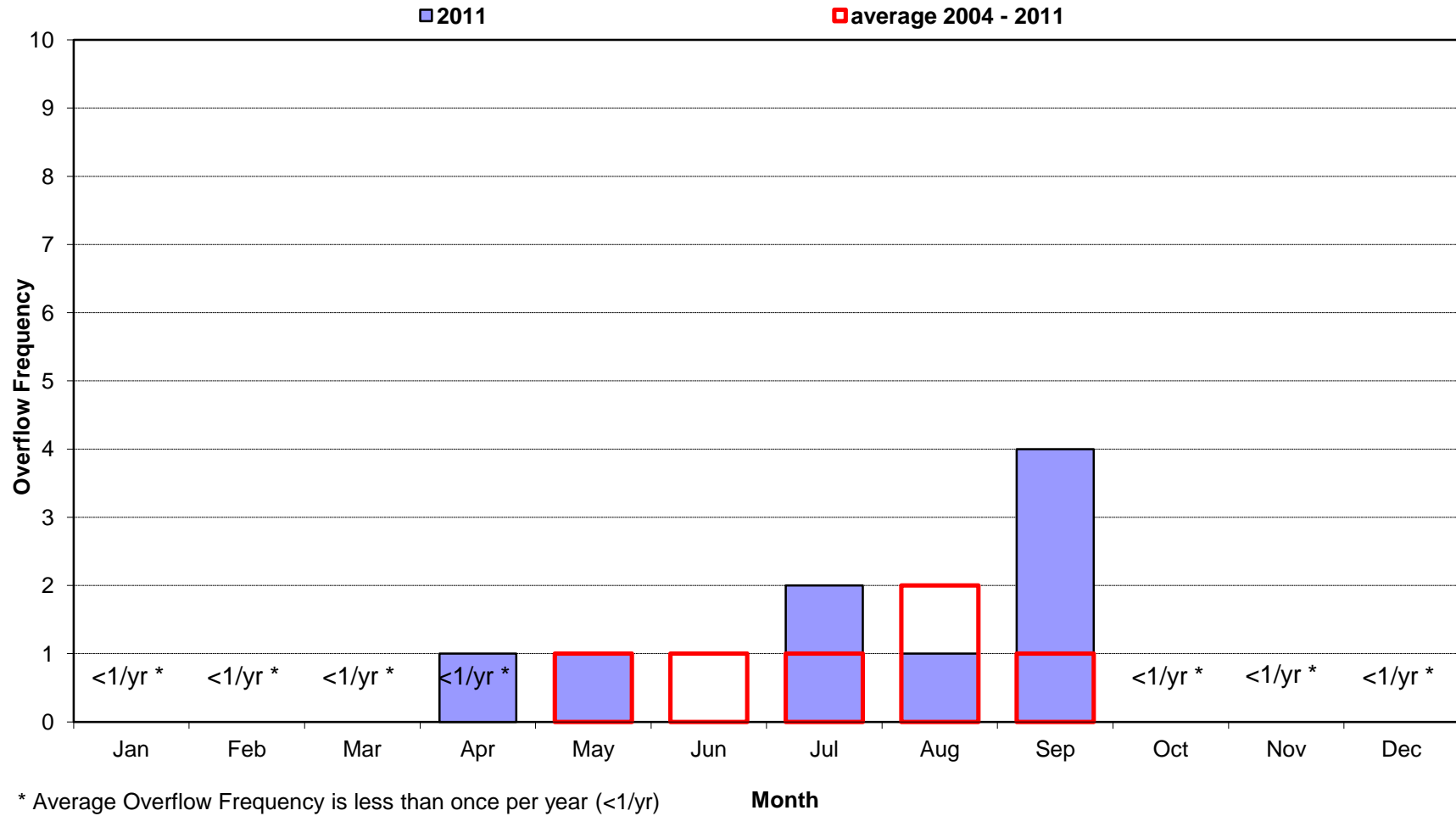
Date	Num of Overflows	Storm ⁽¹⁾ Total (in.)	Hours of Rainfall	Maximum Storm Intensity (in./hr.)	Volume of Overflow (MG)	Duration of Overflow (hrs.)
9/1/11						
9/2/11						
9/3/11						
9/4/11						
9/5/11						
9/6/11		4.78	45	1.09	none	none
9/7/11	1				2.21	2
9/8/11	1	1.28	2	1.10	1.54	2
9/9/11						
9/10/11						
9/11/11						
9/12/11						
9/13/11						
9/14/11						
9/15/11						
9/16/11						
9/17/11		0.04	2	0.03	none	none
9/18/11						
9/19/11						
9/20/11						
9/21/11	1	0.67	6	0.64	0.04	2
9/22/11						
9/23/11		0.47	15	0.15	none	none
9/24/11		0.03	2	0.02	none	none
9/25/11						
9/26/11						
9/27/11	1	1.57	8	1.01	1.28	2
9/28/11		0.08	1	0.08	none	none
9/29/11						
9/30/11		0.03	1	0.03	none	none

MONTH SUMMARY

Num of Overflows	Total Rain	Total Hours	Max Intensity	Total Volume	Total Duration
4	8.95	82	1.10	5.08	8

(1) Storm Total (in) data from National Weather Service, Wakefield Office, Richmond International Airport.

City of Richmond, Virginia
Overflow Frequency by Month
CSO11 - Park Hydro 2004-2011



CSO12 - Hilton Street
Rainfall and Overflow Model Summary
Current Month: September 2011

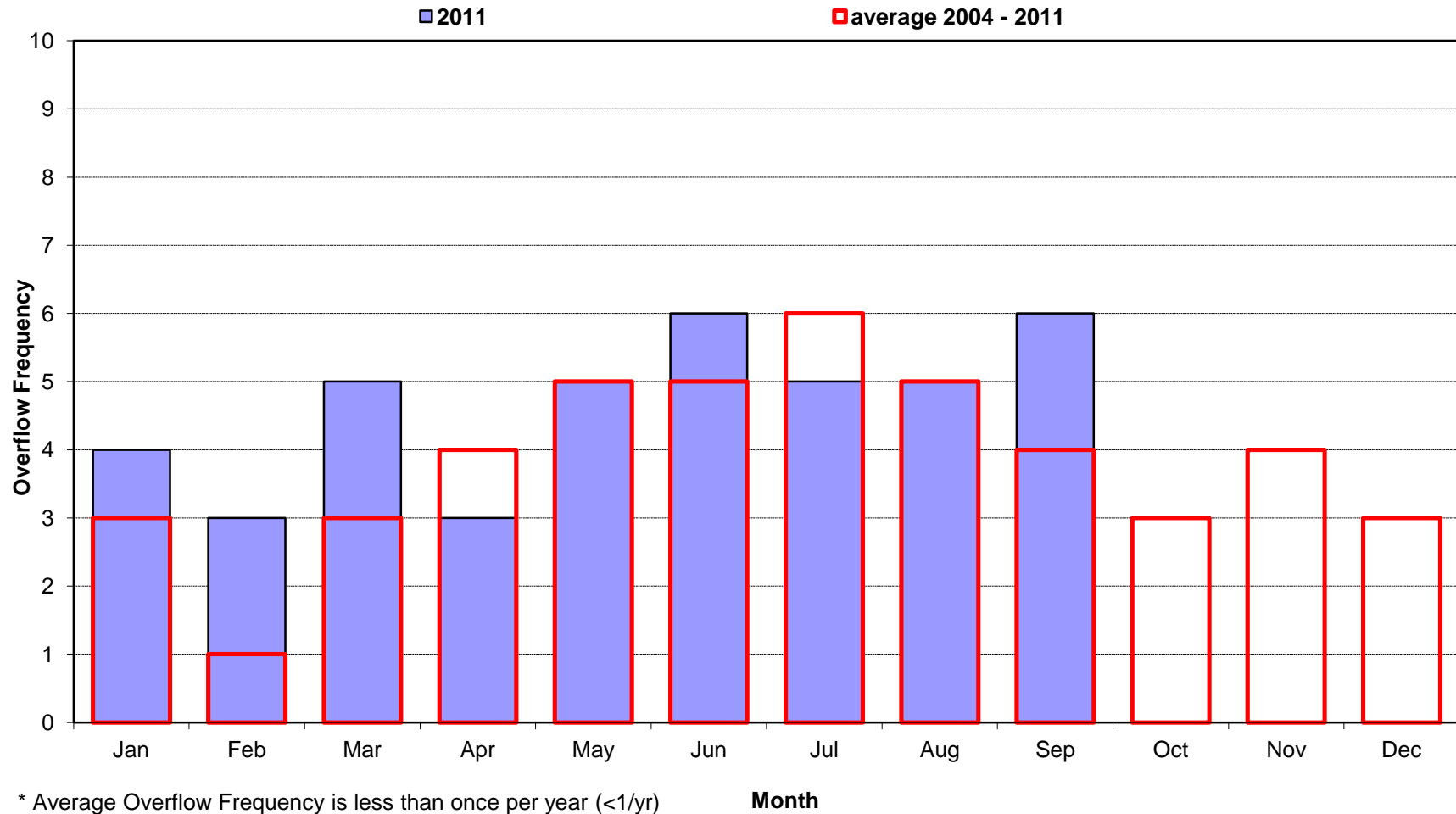
Date	Num of Overflows	Storm ⁽¹⁾ Total (in.)	Hours of Rainfall	Maximum Storm Intensity (in./hr.)	Volume of Overflow (MG)	Duration of Overflow (hrs.)
9/1/11						
9/2/11						
9/3/11						
9/4/11						
9/5/11						
9/6/11	1	4.78	45	1.09	0.12	13
9/7/11	1				3.61	21
9/8/11	1	1.28	2	1.10	0.76	3
9/9/11						
9/10/11						
9/11/11						
9/12/11						
9/13/11						
9/14/11						
9/15/11						
9/16/11						
9/17/11		0.04	2	0.03	none	none
9/18/11						
9/19/11						
9/20/11						
9/21/11	1	0.67	6	0.64	0.21	2
9/22/11						
9/23/11	1	0.47	15	0.15	0.01	2
9/24/11		0.03	2	0.02	none	none
9/25/11						
9/26/11						
9/27/11	1	1.57	8	1.01	0.58	8
9/28/11		0.08	1	0.08	none	none
9/29/11						
9/30/11		0.03	1	0.03	none	none

MONTH SUMMARY

Num of Overflows	Total Rain	Total Hours	Max Intensity	Total Volume	Total Duration
6	8.95	82	1.10	5.29	49

(1) Storm Total (in) data from National Weather Service, Wakefield Office, Richmond International Airport.

City of Richmond, Virginia
Overflow Frequency by Month
CSO12 - Hilton Street 2004-2011



CSO13 - Maury St
Rainfall and Overflow Model Summary
Current Month: September 2011

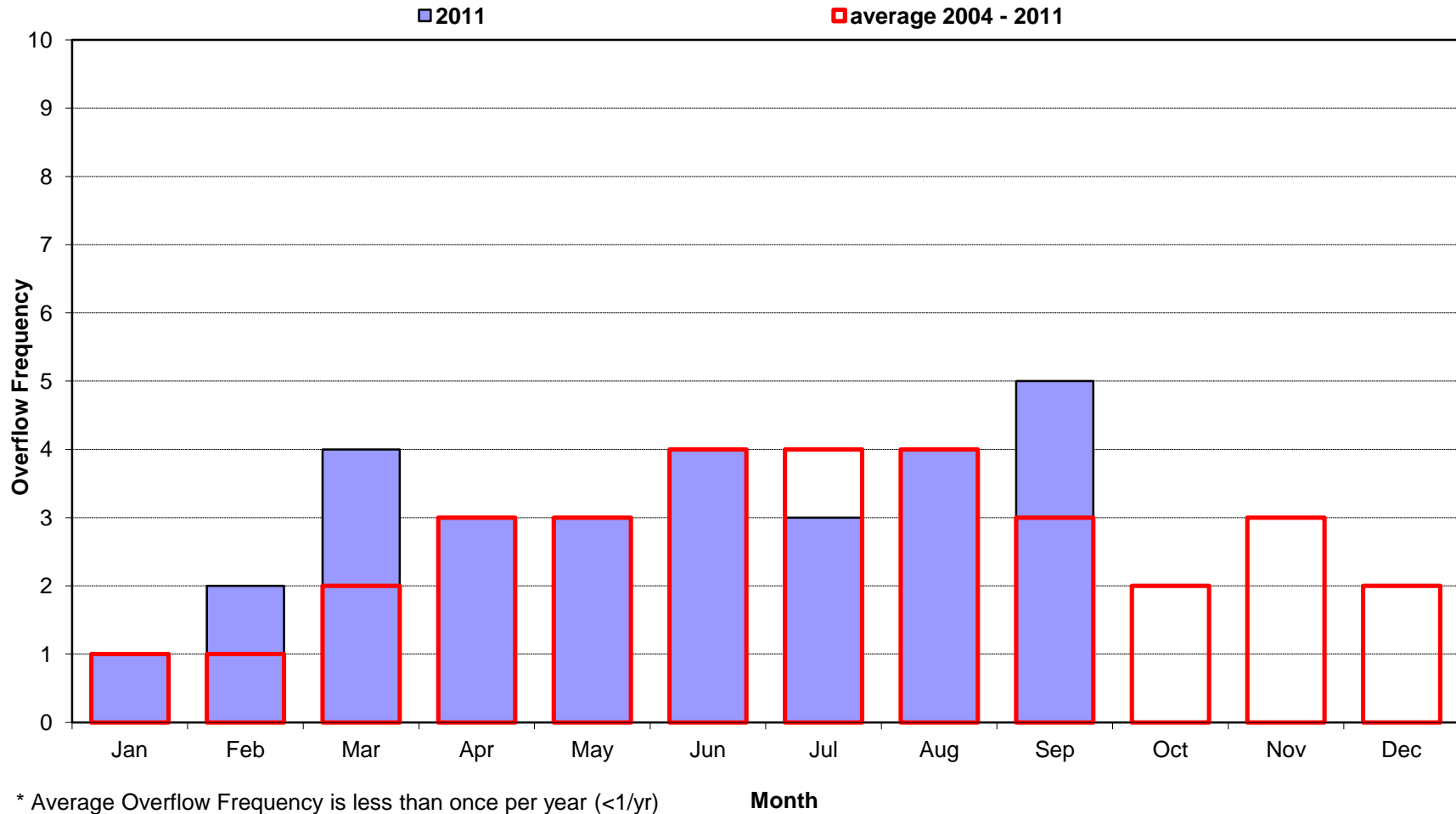
Date	Num of Overflows	Storm ⁽¹⁾ Total (in.)	Hours of Rainfall	Maximum Storm Intensity (in./hr.)	Volume of Overflow (MG)	Duration of Overflow (hrs.)
9/1/11						
9/2/11						
9/3/11						
9/4/11						
9/5/11						
9/6/11	1	4.78	45	1.09	0.01	2
9/7/11	1				0.51	15
9/8/11	1	1.28	2	1.10	0.24	2
9/9/11						
9/10/11						
9/11/11						
9/12/11						
9/13/11						
9/14/11						
9/15/11						
9/16/11						
9/17/11		0.04	2	0.03	none	none
9/18/11						
9/19/11						
9/20/11						
9/21/11	1	0.67	6	0.64	0.10	2
9/22/11						
9/23/11		0.47	15	0.15	none	none
9/24/11		0.03	2	0.02	none	none
9/25/11						
9/26/11						
9/27/11	1	1.57	8	1.01	0.26	6
9/28/11		0.08	1	0.08	none	none
9/29/11						
9/30/11		0.03	1	0.03	none	none

MONTH SUMMARY

Num of Overflows	Total Rain	Total Hours	Max Intensity	Total Volume	Total Duration
5	8.95	82	1.10	1.13	27

(1) Storm Total (in) data from National Weather Service, Wakefield Office, Richmond International Airport.

City of Richmond, Virginia
Overflow Frequency by Month
CSO13 - Maury St 2004-2011



CSO14 - Stockton
Rainfall and Overflow Model Summary
Current Month: September 2011

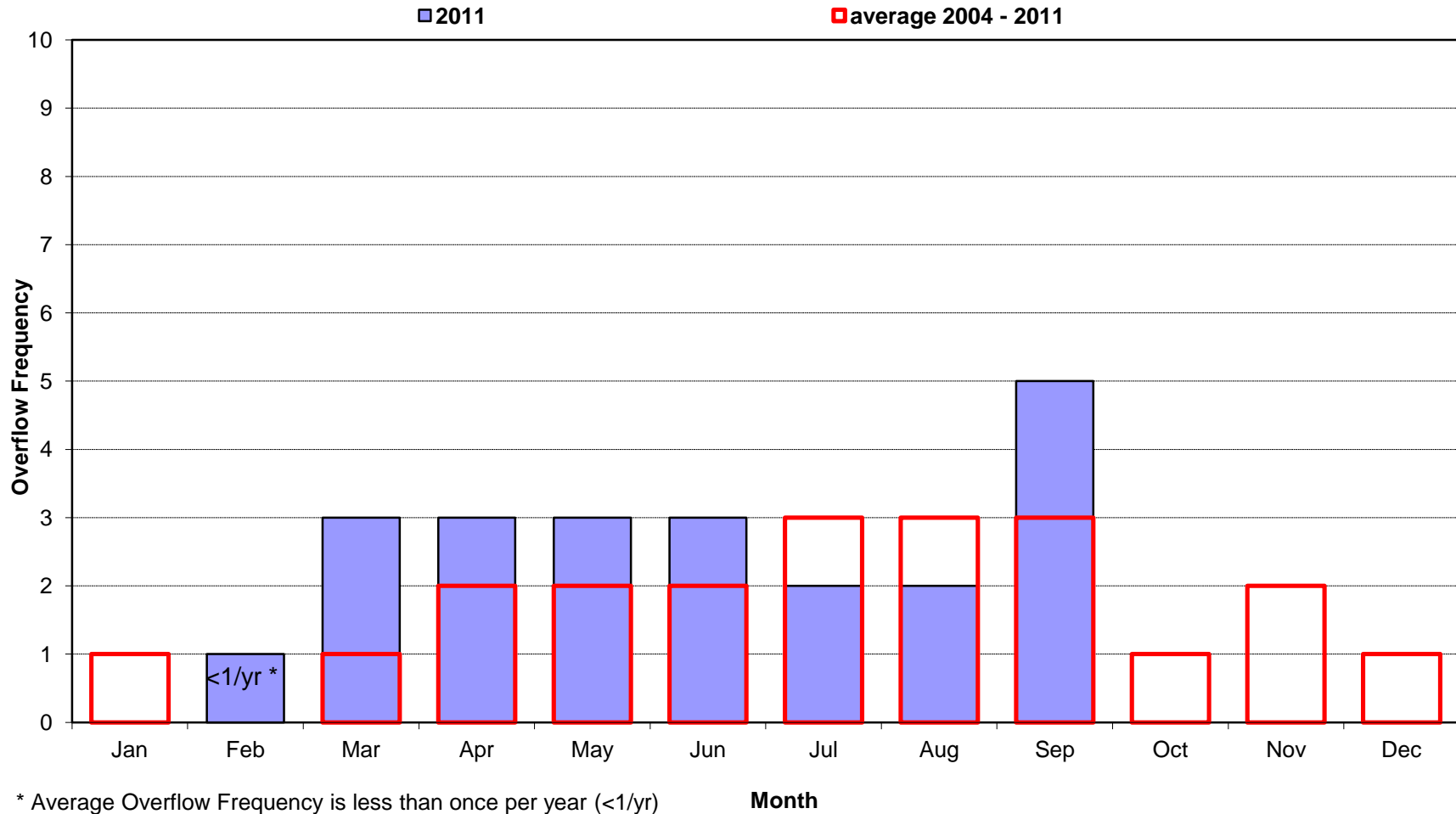
Date	Num of Overflows	Storm ⁽¹⁾ Total (in.)	Hours of Rainfall	Maximum Storm Intensity (in./hr.)	Volume of Overflow (MG)	Duration of Overflow (hrs.)
9/1/11						
9/2/11						
9/3/11						
9/4/11						
9/5/11						
9/6/11		4.78	45	1.09	none	none
9/7/11	2				8.22	6
9/8/11	1	1.28	2	1.10	4.74	2
9/9/11						
9/10/11						
9/11/11						
9/12/11						
9/13/11						
9/14/11						
9/15/11						
9/16/11						
9/17/11		0.04	2	0.03	none	none
9/18/11						
9/19/11						
9/20/11						
9/21/11	1	0.67	6	0.64	1.62	2
9/22/11						
9/23/11		0.47	15	0.15	none	none
9/24/11		0.03	2	0.02	none	none
9/25/11						
9/26/11						
9/27/11	1	1.57	8	1.01	4.53	6
9/28/11		0.08	1	0.08	none	none
9/29/11						
9/30/11		0.03	1	0.03	none	none

MONTH SUMMARY

Num of Overflows	Total Rain	Total Hours	Max Intensity	Total Volume	Total Duration
5	8.95	82	1.10	19.10	16

(1) Storm Total (in) data from National Weather Service, Wakefield Office, Richmond International Airport.

City of Richmond, Virginia
Overflow Frequency by Month
CSO14 - Stockton 2004-2011



CSO15 - Canoe Run
Rainfall and Overflow Model Summary
Current Month: September 2011

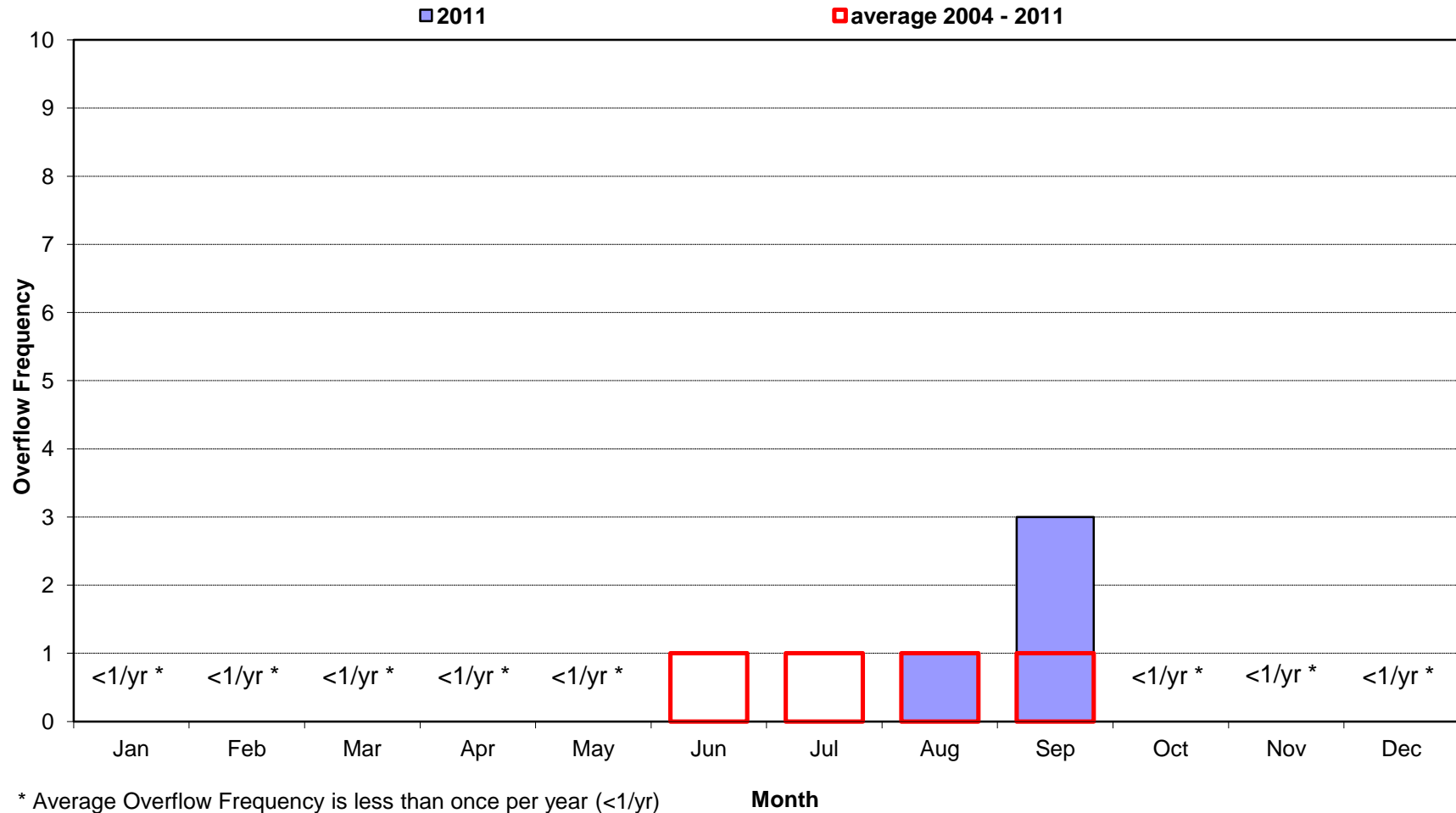
Date	Num of Overflows	Storm ⁽¹⁾ Total (in.)	Hours of Rainfall	Maximum Storm Intensity (in./hr.)	Volume of Overflow (MG)	Duration of Overflow (hrs.)
9/1/11						
9/2/11						
9/3/11						
9/4/11						
9/5/11						
9/6/11		4.78	45	1.09	none	none
9/7/11	1				11.67	2
9/8/11	1	1.28	2	1.10	1.17	2
9/9/11						
9/10/11						
9/11/11						
9/12/11						
9/13/11						
9/14/11						
9/15/11						
9/16/11						
9/17/11		0.04	2	0.03	none	none
9/18/11						
9/19/11						
9/20/11						
9/21/11		0.67	6	0.64	none	none
9/22/11						
9/23/11		0.47	15	0.15	none	none
9/24/11		0.03	2	0.02	none	none
9/25/11						
9/26/11						
9/27/11	1	1.57	8	1.01	0.61	2
9/28/11		0.08	1	0.08	none	none
9/29/11						
9/30/11		0.03	1	0.03	none	none

MONTH SUMMARY

Num of Overflows	Total Rain	Total Hours	Max Intensity	Total Volume	Total Duration
3	8.95	82	1.10	13.44	6

(1) Storm Total (in) data from National Weather Service, Wakefield Office, Richmond International Airport.

City of Richmond, Virginia
Overflow Frequency by Month
CSO15 - Canoe Run 2004-2011



CSO16 - Woodland
Rainfall and Overflow Model Summary
Current Month: September 2011

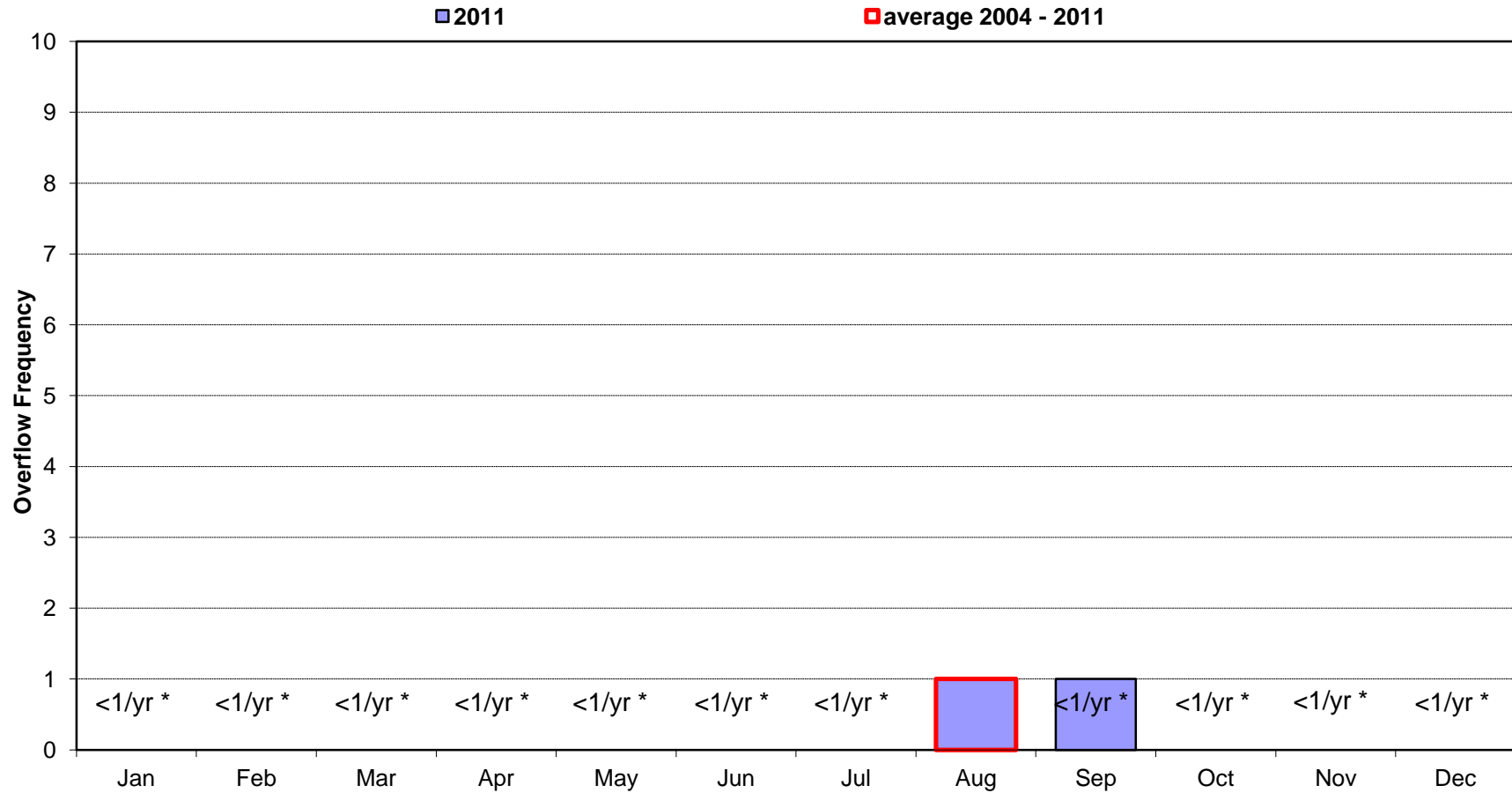
Date	Num of Overflows	Storm ⁽¹⁾ Total (in.)	Hours of Rainfall	Maximum Storm Intensity (in./hr.)	Volume of Overflow (MG)	Duration of Overflow (hrs.)
9/1/11						
9/2/11						
9/3/11						
9/4/11						
9/5/11						
9/6/11		4.78	45	1.09	none	none
9/7/11	1				0.36	2
9/8/11		1.28	2	1.10	none	none
9/9/11						
9/10/11						
9/11/11						
9/12/11						
9/13/11						
9/14/11						
9/15/11						
9/16/11						
9/17/11		0.04	2	0.03	none	none
9/18/11						
9/19/11						
9/20/11						
9/21/11		0.67	6	0.64	none	none
9/22/11						
9/23/11		0.47	15	0.15	none	none
9/24/11		0.03	2	0.02	none	none
9/25/11						
9/26/11						
9/27/11		1.57	8	1.01	none	none
9/28/11		0.08	1	0.08	none	none
9/29/11						
9/30/11		0.03	1	0.03	none	none

MONTH SUMMARY

Num of Overflows	Total Rain	Total Hours	Max Intensity	Total Volume	Total Duration
1	8.95	82	1.10	0.36	2

(1) Storm Total (in) data from National Weather Service, Wakefield Office, Richmond International Airport.

City of Richmond, Virginia
Overflow Frequency by Month
CSO16 - Woodland 2004-2011



* Average Overflow Frequency is less than once per year (<1/yr)

Month

CSO17 - Reedy Creek
Rainfall and Overflow Model Summary
Current Month: September 2011

Date	Num of Overflows	Storm ⁽¹⁾ Total (in.)	Hours of Rainfall	Maximum Storm Intensity (in./hr.)	Volume of Overflow (MG)	Duration of Overflow (hrs.)
9/1/11						
9/2/11						
9/3/11						
9/4/11						
9/5/11						
9/6/11		4.78	45	1.09	none	none
9/7/11						
9/8/11		1.28	2	1.10	none	none
9/9/11						
9/10/11						
9/11/11						
9/12/11						
9/13/11						
9/14/11						
9/15/11						
9/16/11						
9/17/11		0.04	2	0.03	none	none
9/18/11						
9/19/11						
9/20/11						
9/21/11		0.67	6	0.64	none	none
9/22/11						
9/23/11		0.47	15	0.15	none	none
9/24/11		0.03	2	0.02	none	none
9/25/11						
9/26/11						
9/27/11		1.57	8	1.01	none	none
9/28/11		0.08	1	0.08	none	none
9/29/11						
9/30/11		0.03	1	0.03	none	none

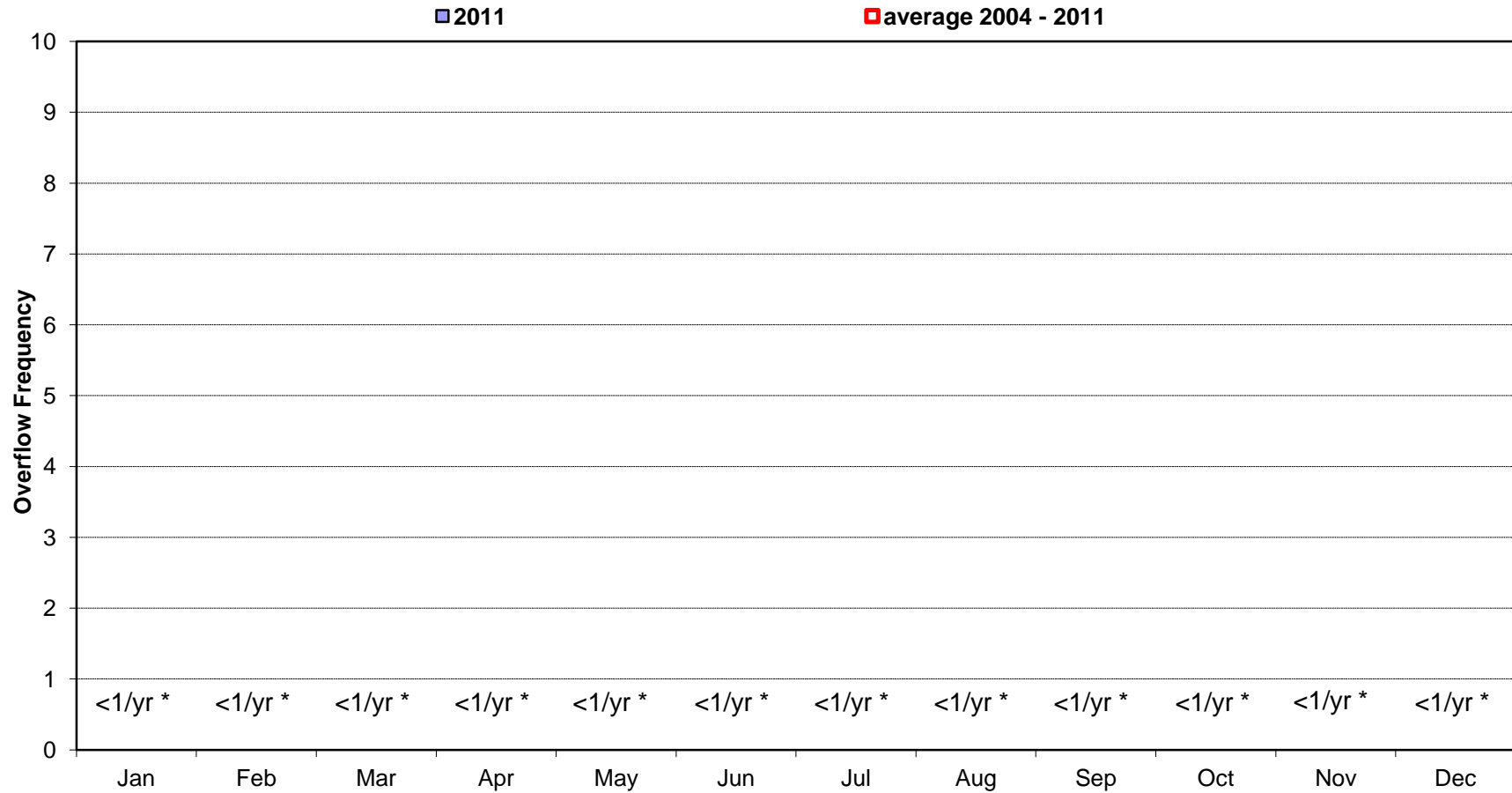
MONTH SUMMARY

Num of Overflows	Total Rain	Total Hours	Max Intensity	Total Volume	Total Duration
	8.95	82	1.10		

(1) Storm Total (in) data from National Weather Service, Wakefield Office, Richmond International Airport.

City of Richmond, Virginia
Overflow Frequency by Month

CSO17 - Reedy Creek 2004-2011



* Average Overflow Frequency is less than once per year (<1/yr)

Month

CSO18 - 42nd Street
Rainfall and Overflow Model Summary
Current Month: September 2011

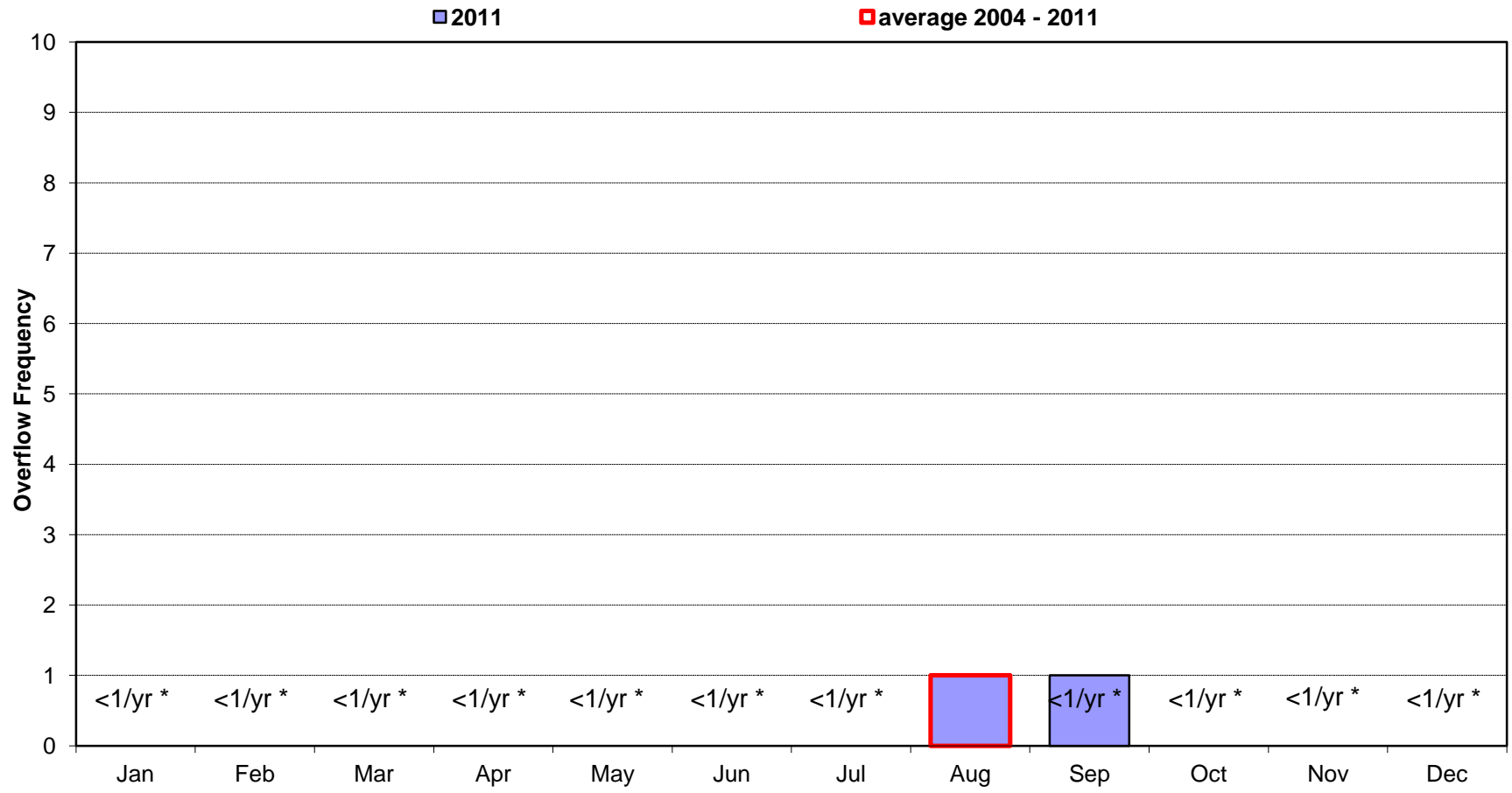
Date	Num of Overflows	Storm ⁽¹⁾ Total (in.)	Hours of Rainfall	Maximum Storm Intensity (in./hr.)	Volume of Overflow (MG)	Duration of Overflow (hrs.)
9/1/11						
9/2/11						
9/3/11						
9/4/11						
9/5/11						
9/6/11		4.78	45	1.09	none	none
9/7/11	1				0.18	2
9/8/11		1.28	2	1.10	none	none
9/9/11						
9/10/11						
9/11/11						
9/12/11						
9/13/11						
9/14/11						
9/15/11						
9/16/11						
9/17/11		0.04	2	0.03	none	none
9/18/11						
9/19/11						
9/20/11						
9/21/11		0.67	6	0.64	none	none
9/22/11						
9/23/11		0.47	15	0.15	none	none
9/24/11		0.03	2	0.02	none	none
9/25/11						
9/26/11						
9/27/11		1.57	8	1.01	none	none
9/28/11		0.08	1	0.08	none	none
9/29/11						
9/30/11		0.03	1	0.03	none	none

MONTH SUMMARY

Num of Overflows	Total Rain	Total Hours	Max Intensity	Total Volume	Total Duration
1	8.95	82	1.10	0.18	2

(1) Storm Total (in) data from National Weather Service, Wakefield Office, Richmond International Airport.

City of Richmond, Virginia
Overflow Frequency by Month
CSO18 - 42nd Street 2004-2011



* Average Overflow Frequency is less than once per year (<1/yr)

Month

CSO19 - Hampton NY
Rainfall and Overflow Model Summary
Current Month: September 2011

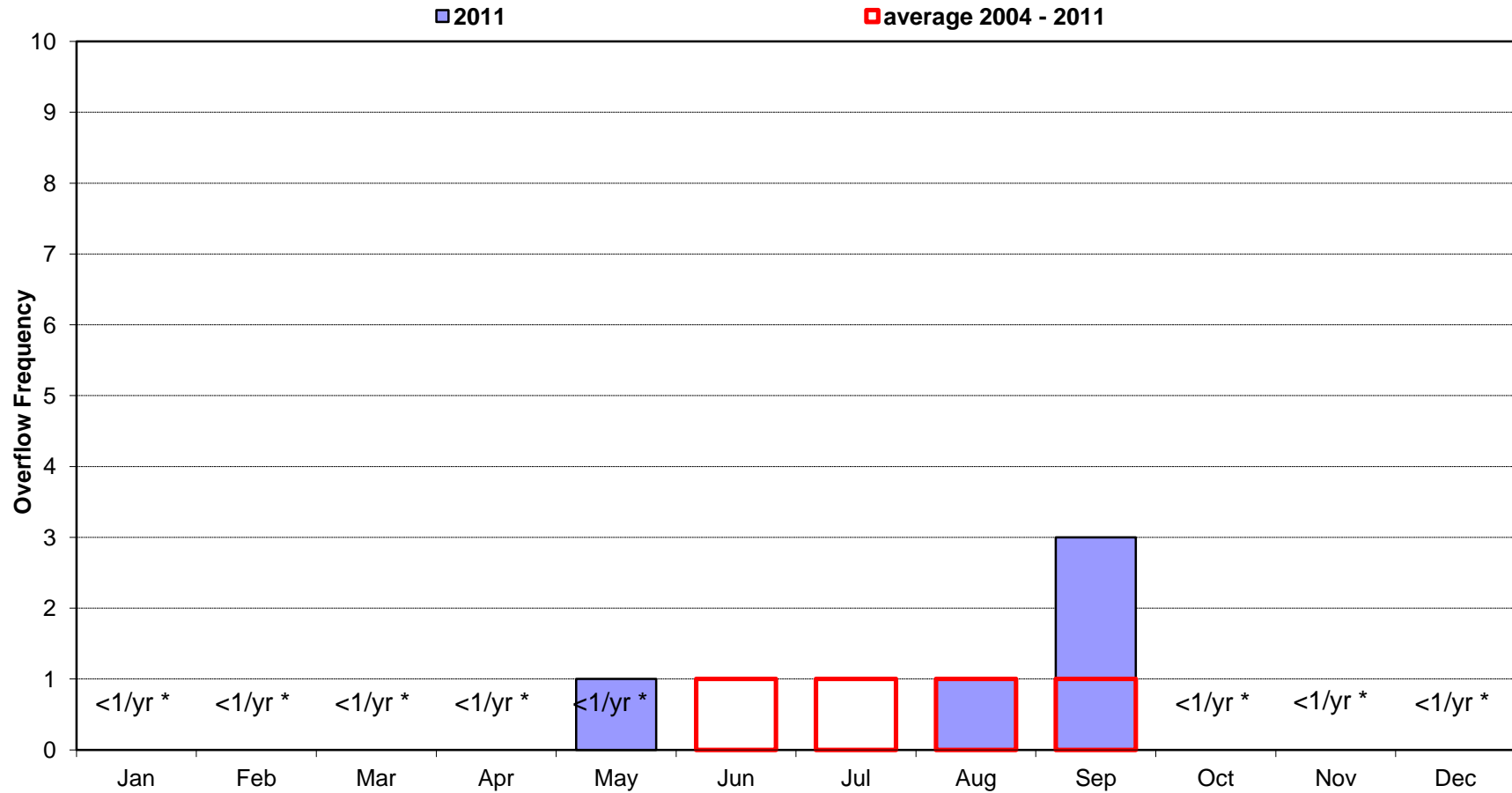
Date	Num of Overflows	Storm ⁽¹⁾ Total (in.)	Hours of Rainfall	Maximum Storm Intensity (in./hr.)	Volume of Overflow (MG)	Duration of Overflow (hrs.)
9/1/11						
9/2/11						
9/3/11						
9/4/11						
9/5/11						
9/6/11		4.78	45	1.09	none	none
9/7/11	1				13.81	14
9/8/11	1	1.28	2	1.10	2.99	3
9/9/11						
9/10/11						
9/11/11						
9/12/11						
9/13/11						
9/14/11						
9/15/11						
9/16/11						
9/17/11		0.04	2	0.03	none	none
9/18/11						
9/19/11						
9/20/11						
9/21/11		0.67	6	0.64	none	none
9/22/11						
9/23/11		0.47	15	0.15	none	none
9/24/11		0.03	2	0.02	none	none
9/25/11						
9/26/11						
9/27/11	1	1.57	8	1.01	0.42	2
9/28/11		0.08	1	0.08	none	none
9/29/11						
9/30/11		0.03	1	0.03	none	none

MONTH SUMMARY

Num of Overflows	Total Rain	Total Hours	Max Intensity	Total Volume	Total Duration
3	8.95	82	1.10	17.21	19

(1) Storm Total (in) data from National Weather Service, Wakefield Office, Richmond International Airport.

City of Richmond, Virginia
Overflow Frequency by Month
CSO19 - Hampton NY 2004-2011



* Average Overflow Frequency is less than once per year (<1/yr)

Month

CSO20 - Mc Cloy
Rainfall and Overflow Model Summary
Current Month: September 2011

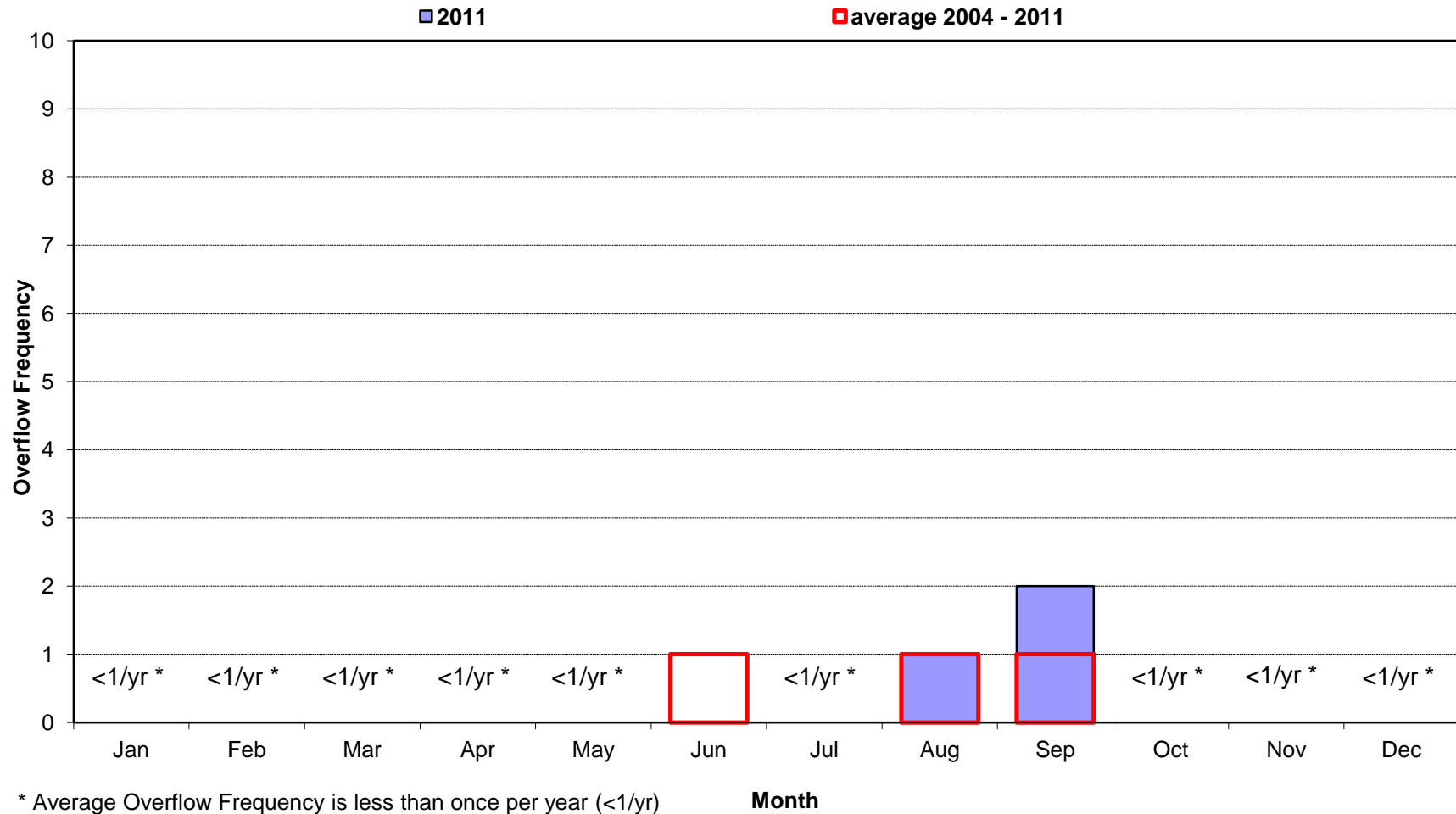
Date	Num of Overflows	Storm ⁽¹⁾ Total (in.)	Hours of Rainfall	Maximum Storm Intensity (in./hr.)	Volume of Overflow (MG)	Duration of Overflow (hrs.)
9/1/11						
9/2/11						
9/3/11						
9/4/11						
9/5/11						
9/6/11		4.78	45	1.09	none	none
9/7/11	1				7.43	14
9/8/11	1	1.28	2	1.10	1.24	3
9/9/11						
9/10/11						
9/11/11						
9/12/11						
9/13/11						
9/14/11						
9/15/11						
9/16/11						
9/17/11		0.04	2	0.03	none	none
9/18/11						
9/19/11						
9/20/11						
9/21/11		0.67	6	0.64	none	none
9/22/11						
9/23/11		0.47	15	0.15	none	none
9/24/11		0.03	2	0.02	none	none
9/25/11						
9/26/11						
9/27/11		1.57	8	1.01	none	none
9/28/11		0.08	1	0.08	none	none
9/29/11						
9/30/11		0.03	1	0.03	none	none

MONTH SUMMARY

Num of Overflows	Total Rain	Total Hours	Max Intensity	Total Volume	Total Duration
2	8.95	82	1.10	8.67	17

(1) Storm Total (in) data from National Weather Service, Wakefield Office, Richmond International Airport.

City of Richmond, Virginia
Overflow Frequency by Month
CSO20 - Mc Cloy 2004-2011



CSO21 - Gordon Ave
Rainfall and Overflow Model Summary
Current Month: September 2011

Date	Num of Overflows	Storm ⁽¹⁾ Total (in.)	Hours of Rainfall	Maximum Storm Intensity (in./hr.)	Volume of Overflow (MG)	Duration of Overflow (hrs.)
9/1/11						
9/2/11						
9/3/11						
9/4/11						
9/5/11						
9/6/11	1	4.78	45	1.09	2.61	16
9/7/11	1				18.21	21
9/8/11	1	1.28	2	1.10	6.49	3
9/9/11						
9/10/11						
9/11/11						
9/12/11						
9/13/11						
9/14/11						
9/15/11						
9/16/11						
9/17/11		0.04	2	0.03	none	none
9/18/11						
9/19/11						
9/20/11						
9/21/11	1	0.67	6	0.64	2.93	2
9/22/11						
9/23/11	1	0.47	15	0.15	0.72	5
9/24/11		0.03	2	0.02	none	none
9/25/11						
9/26/11						
9/27/11	1	1.57	8	1.01	7.35	8
9/28/11	1	0.08	1	0.08	0.01	2
9/29/11						
9/30/11		0.03	1	0.03	none	none

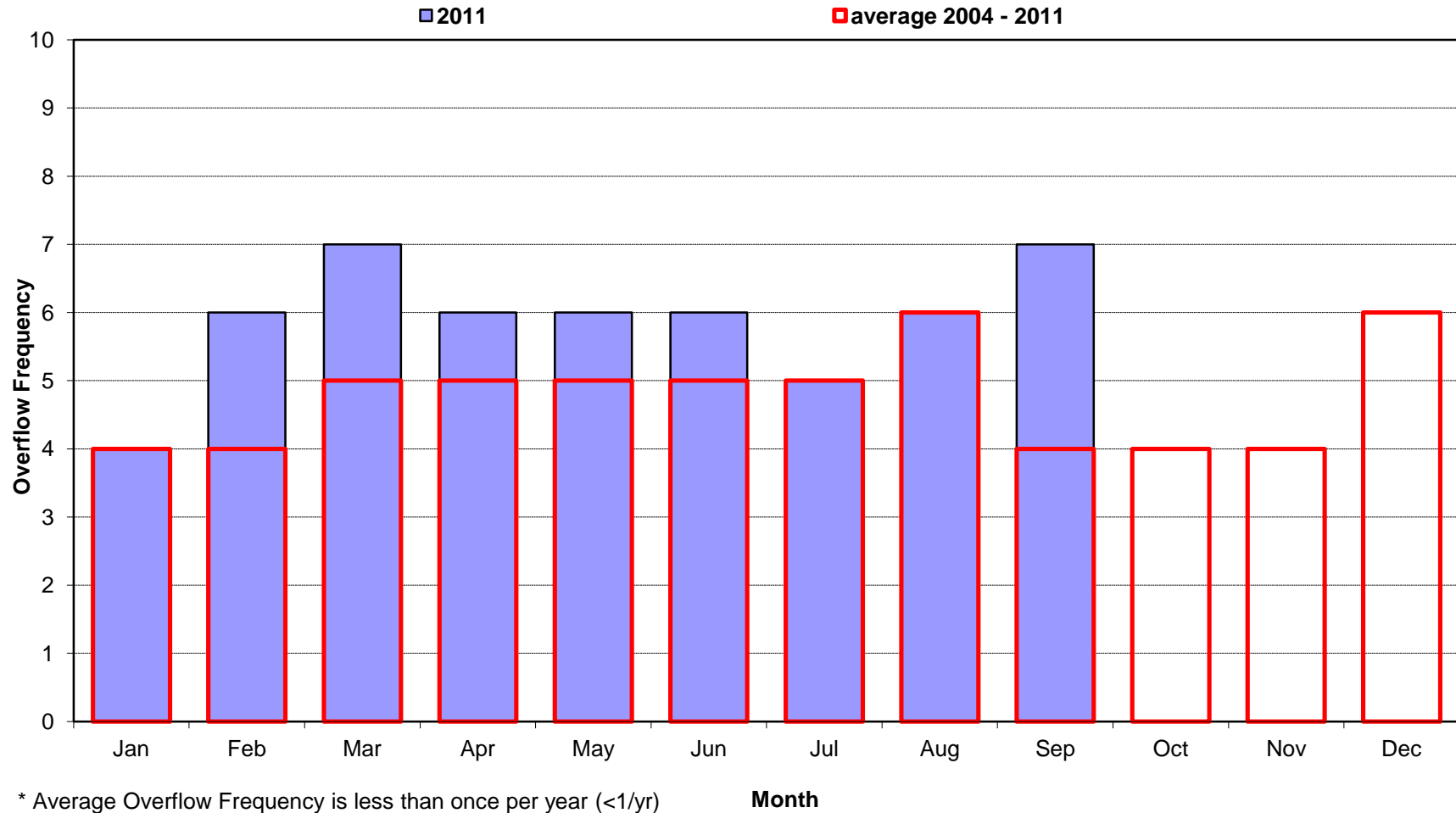
MONTH SUMMARY

Num of Overflows	Total Rain	Total Hours	Max Intensity	Total Volume	Total Duration
7	8.95	82	1.10	38.32	57

(1) Storm Total (in) data from National Weather Service, Wakefield Office, Richmond International Airport.

City of Richmond, Virginia
Overflow Frequency by Month

CSO21 - Gordon Ave 2004-2011



CSO23 - Old Ful St Bridge
Rainfall and Overflow Model Summary
Current Month: September 2011

Date	Num of Overflows	Storm ⁽¹⁾ Total (in.)	Hours of Rainfall	Maximum Storm Intensity (in./hr.)	Volume of Overflow (MG)	Duration of Overflow (hrs.)
9/1/11						
9/2/11						
9/3/11						
9/4/11						
9/5/11						
9/6/11		4.78	45	1.09	none	none
9/7/11						
9/8/11		1.28	2	1.10	none	none
9/9/11						
9/10/11						
9/11/11						
9/12/11						
9/13/11						
9/14/11						
9/15/11						
9/16/11						
9/17/11		0.04	2	0.03	none	none
9/18/11						
9/19/11						
9/20/11						
9/21/11		0.67	6	0.64	none	none
9/22/11						
9/23/11		0.47	15	0.15	none	none
9/24/11		0.03	2	0.02	none	none
9/25/11						
9/26/11						
9/27/11		1.57	8	1.01	none	none
9/28/11		0.08	1	0.08	none	none
9/29/11						
9/30/11		0.03	1	0.03	none	none

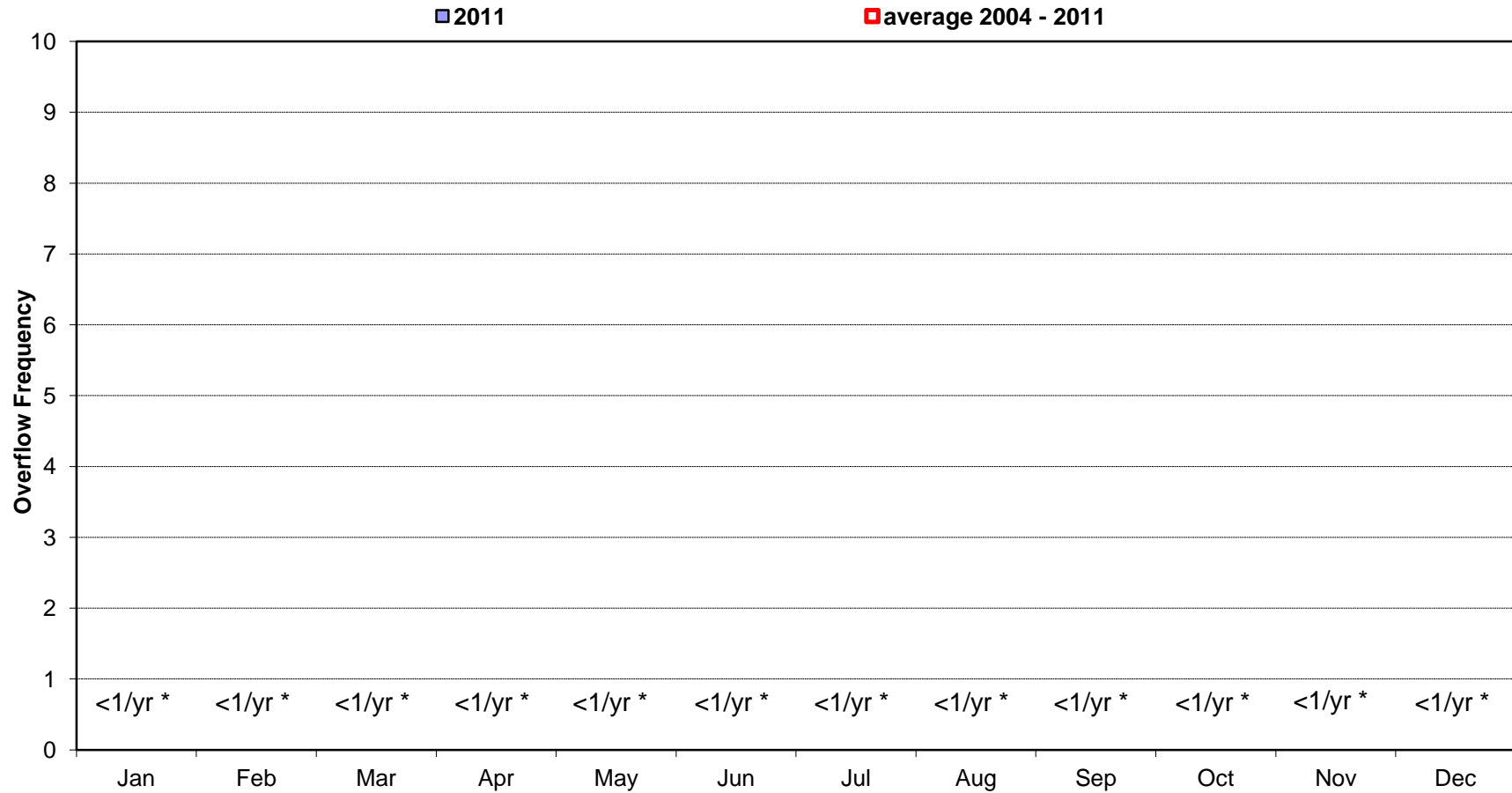
MONTH SUMMARY

Num of Overflows	Total Rain	Total Hours	Max Intensity	Total Volume	Total Duration
	8.95	82	1.10		

(1) Storm Total (in) data from National Weather Service, Wakefield Office, Richmond International Airport.

City of Richmond, Virginia
Overflow Frequency by Month

CSO23 - Old Ful St Bridge 2004-2011



* Average Overflow Frequency is less than once per year (<1/yr)

Month

CSO24 - Gillies & Varina
Rainfall and Overflow Model Summary
Current Month: September 2011

Date	Num of Overflows	Storm ⁽¹⁾ Total (in.)	Hours of Rainfall	Maximum Storm Intensity (in./hr.)	Volume of Overflow (MG)	Duration of Overflow (hrs.)
9/1/11						
9/2/11						
9/3/11						
9/4/11						
9/5/11						
9/6/11	1	4.78	45	1.09	0.26	15
9/7/11	1				3.09	21
9/8/11	1	1.28	2	1.10	1.15	3
9/9/11						
9/10/11						
9/11/11						
9/12/11						
9/13/11						
9/14/11						
9/15/11						
9/16/11						
9/17/11		0.04	2	0.03	none	none
9/18/11						
9/19/11						
9/20/11						
9/21/11	1	0.67	6	0.64	0.48	2
9/22/11						
9/23/11	1	0.47	15	0.15	0.03	2
9/24/11		0.03	2	0.02	none	none
9/25/11						
9/26/11						
9/27/11	1	1.57	8	1.01	1.30	8
9/28/11		0.08	1	0.08	none	none
9/29/11						
9/30/11		0.03	1	0.03	none	none

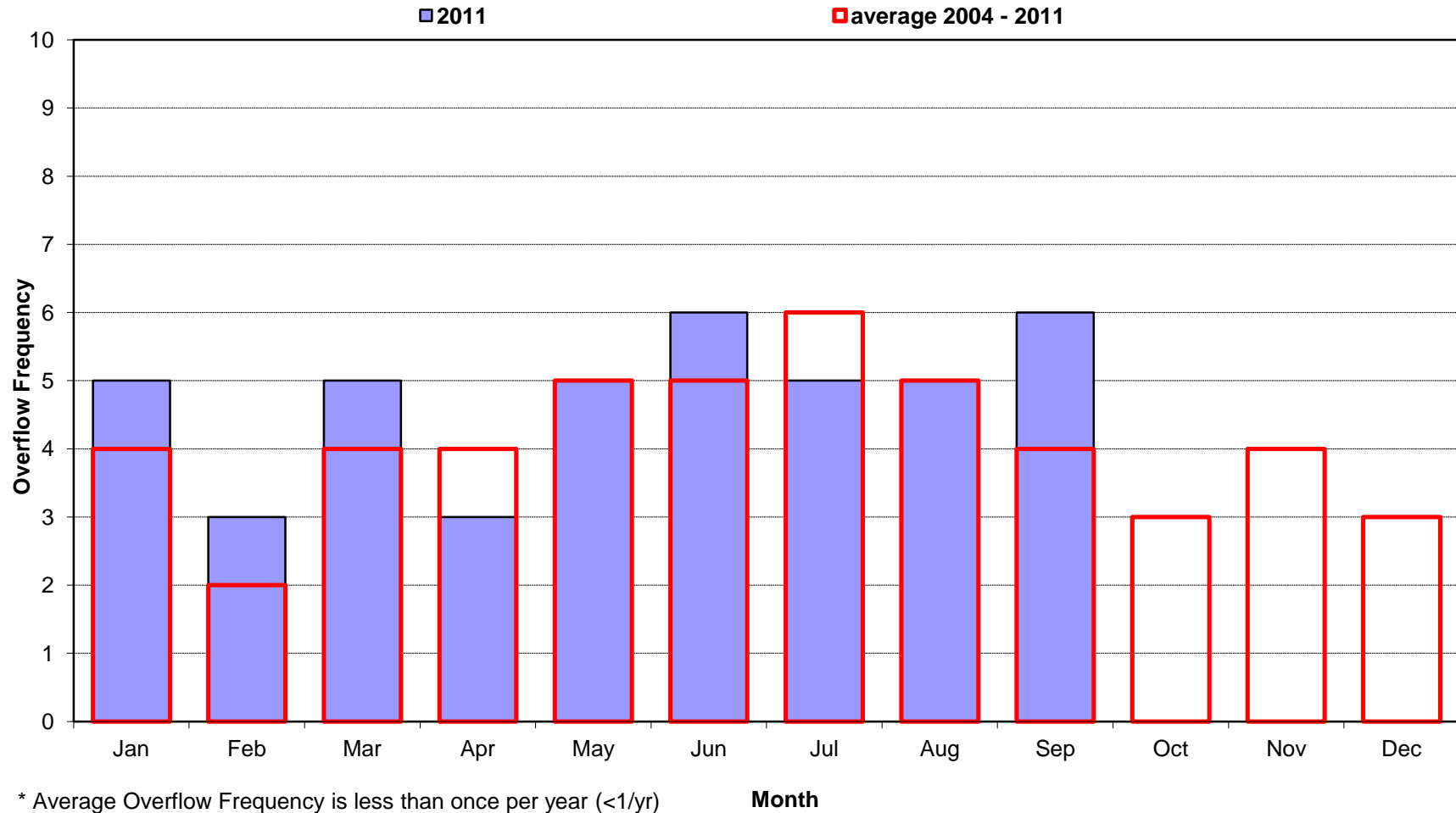
MONTH SUMMARY

Num of Overflows	Total Rain	Total Hours	Max Intensity	Total Volume	Total Duration
6	8.95	82	1.10	6.31	51

(1) Storm Total (in) data from National Weather Service, Wakefield Office, Richmond International Airport.

City of Richmond, Virginia
Overflow Frequency by Month

CSO24 - Gillies & Varina 2004-2011



CSO25 - Briel & Gillies Cr
Rainfall and Overflow Model Summary
Current Month: September 2011

Date	Num of Overflows	Storm ⁽¹⁾ Total (in.)	Hours of Rainfall	Maximum Storm Intensity (in./hr.)	Volume of Overflow (MG)	Duration of Overflow (hrs.)
9/1/11						
9/2/11						
9/3/11						
9/4/11						
9/5/11						
9/6/11	1	4.78	45	1.09	0.13	13
9/7/11	1				4.01	21
9/8/11	1	1.28	2	1.10	0.94	3
9/9/11						
9/10/11						
9/11/11						
9/12/11						
9/13/11						
9/14/11						
9/15/11						
9/16/11						
9/17/11		0.04	2	0.03	none	none
9/18/11						
9/19/11						
9/20/11						
9/21/11	1	0.67	6	0.64	0.28	2
9/22/11						
9/23/11	1	0.47	15	0.15	0.00	1
9/24/11		0.03	2	0.02	none	none
9/25/11						
9/26/11						
9/27/11	1	1.57	8	1.01	0.77	8
9/28/11		0.08	1	0.08	none	none
9/29/11						
9/30/11		0.03	1	0.03	none	none

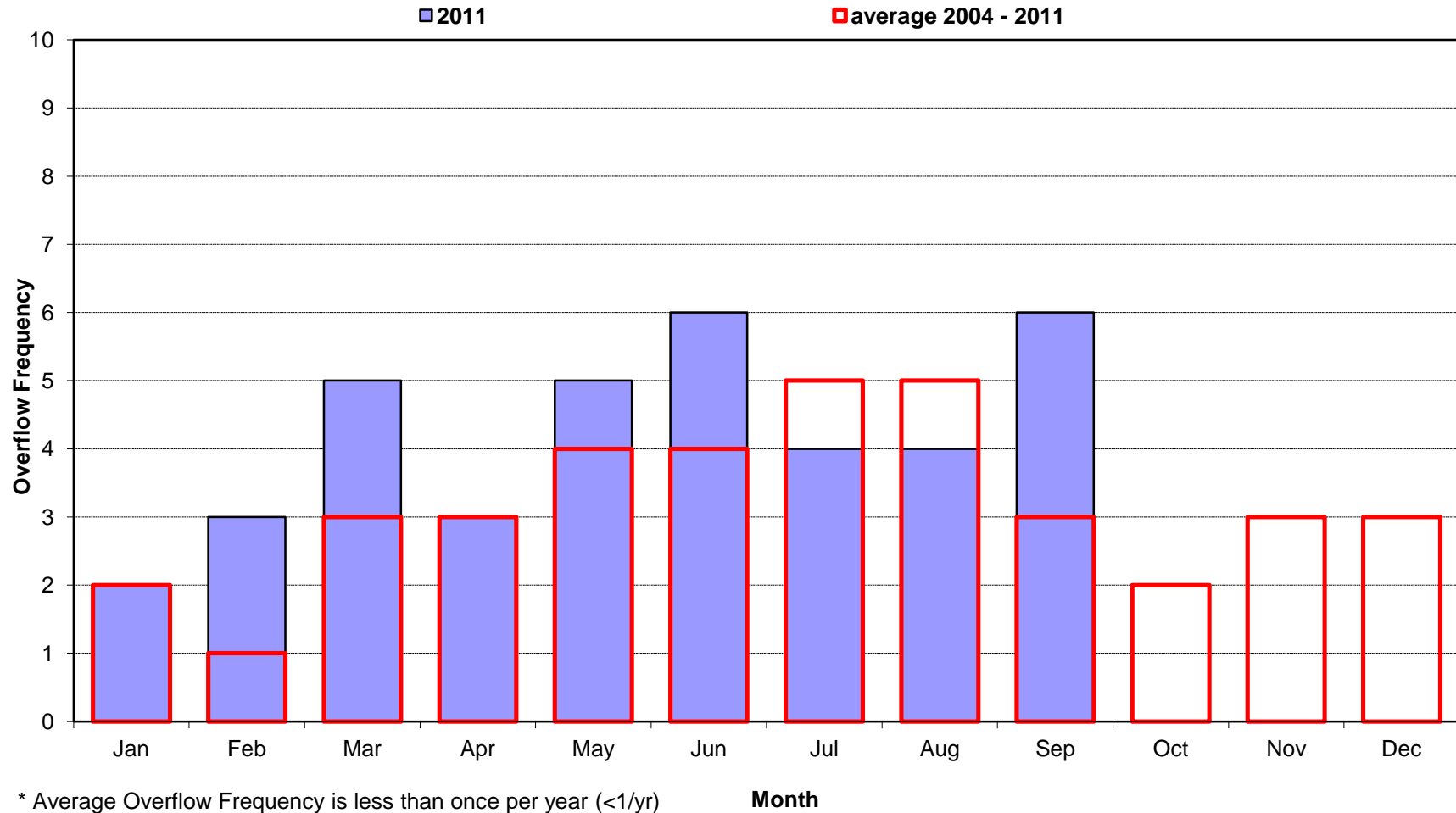
MONTH SUMMARY

Num of Overflows	Total Rain	Total Hours	Max Intensity	Total Volume	Total Duration
6	8.95	82	1.10	6.13	48

(1) Storm Total (in) data from National Weather Service, Wakefield Office, Richmond International Airport.

City of Richmond, Virginia
Overflow Frequency by Month

CSO25 - Briel & Gillies Cr 2004-2011



CSO26 - Gov't Road & NSRR
Rainfall and Overflow Model Summary
Current Month: September 2011

Date	Num of Overflows	Storm ⁽¹⁾ Total (in.)	Hours of Rainfall	Maximum Storm Intensity (in./hr.)	Volume of Overflow (MG)	Duration of Overflow (hrs.)
9/1/11						
9/2/11						
9/3/11						
9/4/11						
9/5/11						
9/6/11	1	4.78	45	1.09	0.05	13
9/7/11	1				1.04	20
9/8/11	1	1.28	2	1.10	0.37	2
9/9/11						
9/10/11						
9/11/11						
9/12/11						
9/13/11						
9/14/11						
9/15/11						
9/16/11						
9/17/11		0.04	2	0.03	none	none
9/18/11						
9/19/11						
9/20/11						
9/21/11	1	0.67	6	0.64	0.13	2
9/22/11						
9/23/11	1	0.47	15	0.15	0.00	1
9/24/11		0.03	2	0.02	none	none
9/25/11						
9/26/11						
9/27/11	1	1.57	8	1.01	0.42	8
9/28/11		0.08	1	0.08	none	none
9/29/11						
9/30/11		0.03	1	0.03	none	none

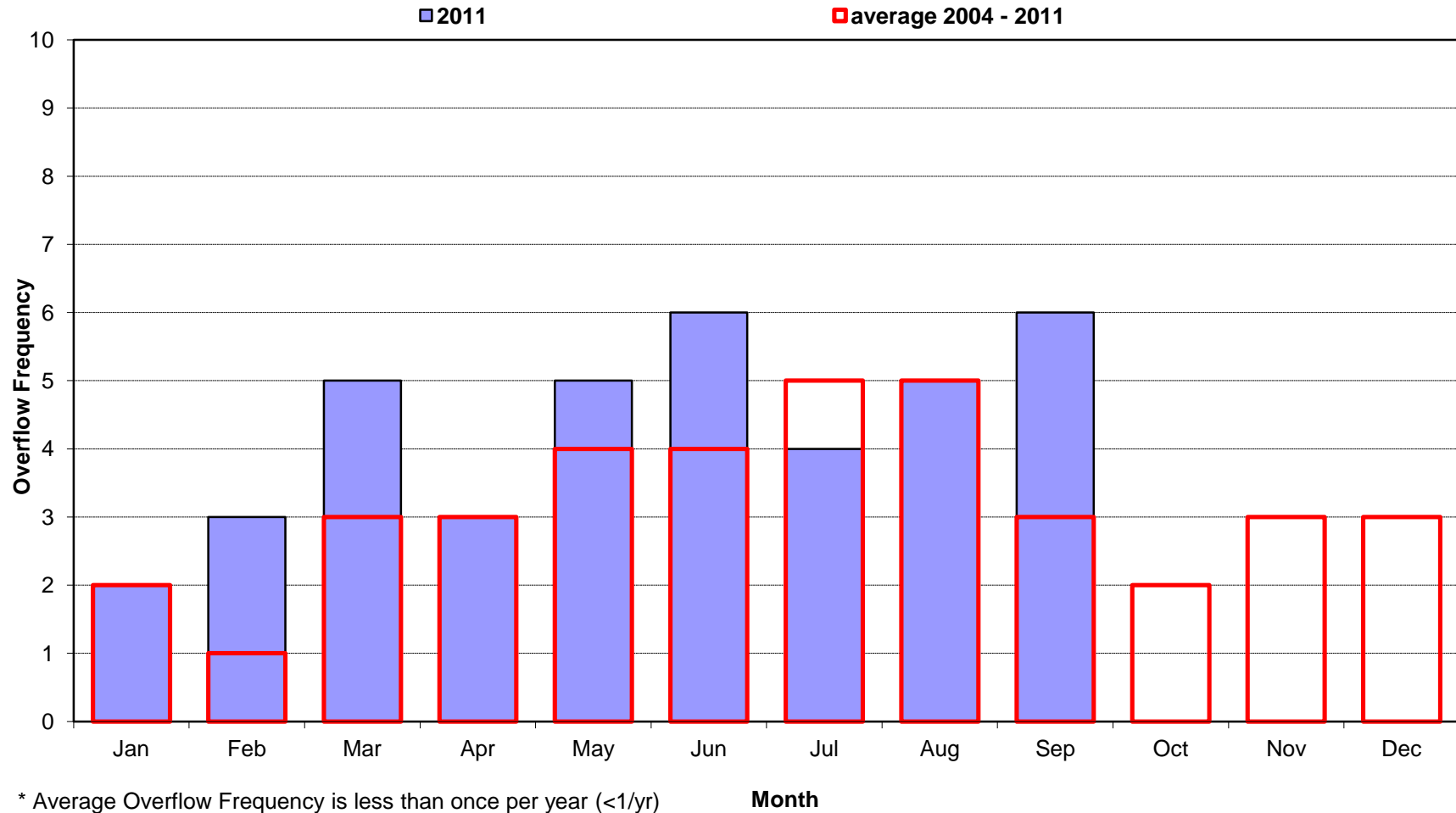
MONTH SUMMARY

Num of Overflows	Total Rain	Total Hours	Max Intensity	Total Volume	Total Duration
6	8.95	82	1.10	2.01	46

(1) Storm Total (in) data from National Weather Service, Wakefield Office, Richmond International Airport.

City of Richmond, Virginia
Overflow Frequency by Month

CSO26 - Gov't Road & NSRR 2004-2011



CSO27 - New W'Burg Road
Rainfall and Overflow Model Summary
Current Month: September 2011

Date	Num of Overflows	Storm ⁽¹⁾ Total (in.)	Hours of Rainfall	Maximum Storm Intensity (in./hr.)	Volume of Overflow (MG)	Duration of Overflow (hrs.)
9/1/11						
9/2/11						
9/3/11						
9/4/11						
9/5/11						
9/6/11		4.78	45	1.09	none	none
9/7/11						
9/8/11		1.28	2	1.10	none	none
9/9/11						
9/10/11						
9/11/11						
9/12/11						
9/13/11						
9/14/11						
9/15/11						
9/16/11						
9/17/11		0.04	2	0.03	none	none
9/18/11						
9/19/11						
9/20/11						
9/21/11		0.67	6	0.64	none	none
9/22/11						
9/23/11		0.47	15	0.15	none	none
9/24/11		0.03	2	0.02	none	none
9/25/11						
9/26/11						
9/27/11		1.57	8	1.01	none	none
9/28/11		0.08	1	0.08	none	none
9/29/11						
9/30/11		0.03	1	0.03	none	none

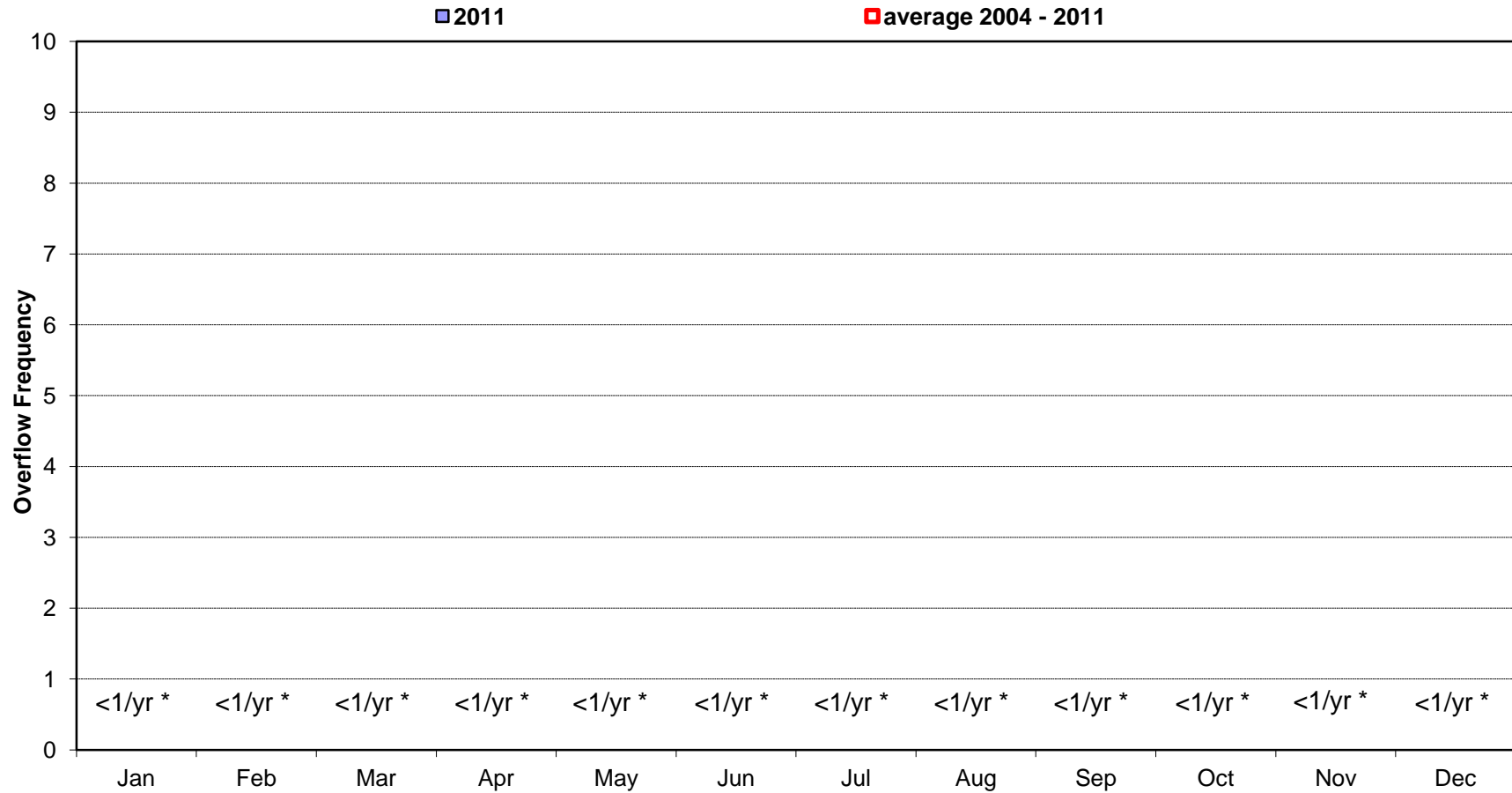
MONTH SUMMARY

Num of Overflows	Total Rain	Total Hours	Max Intensity	Total Volume	Total Duration
	8.95	82	1.10		

(1) Storm Total (in) data from National Weather Service, Wakefield Office, Richmond International Airport.

City of Richmond, Virginia
Overflow Frequency by Month

CSO27 - New W'Burg Road 2004-2011



* Average Overflow Frequency is less than once per year (<1/yr)

Month

CSO28 - W'Burg Road
Rainfall and Overflow Model Summary
Current Month: September 2011

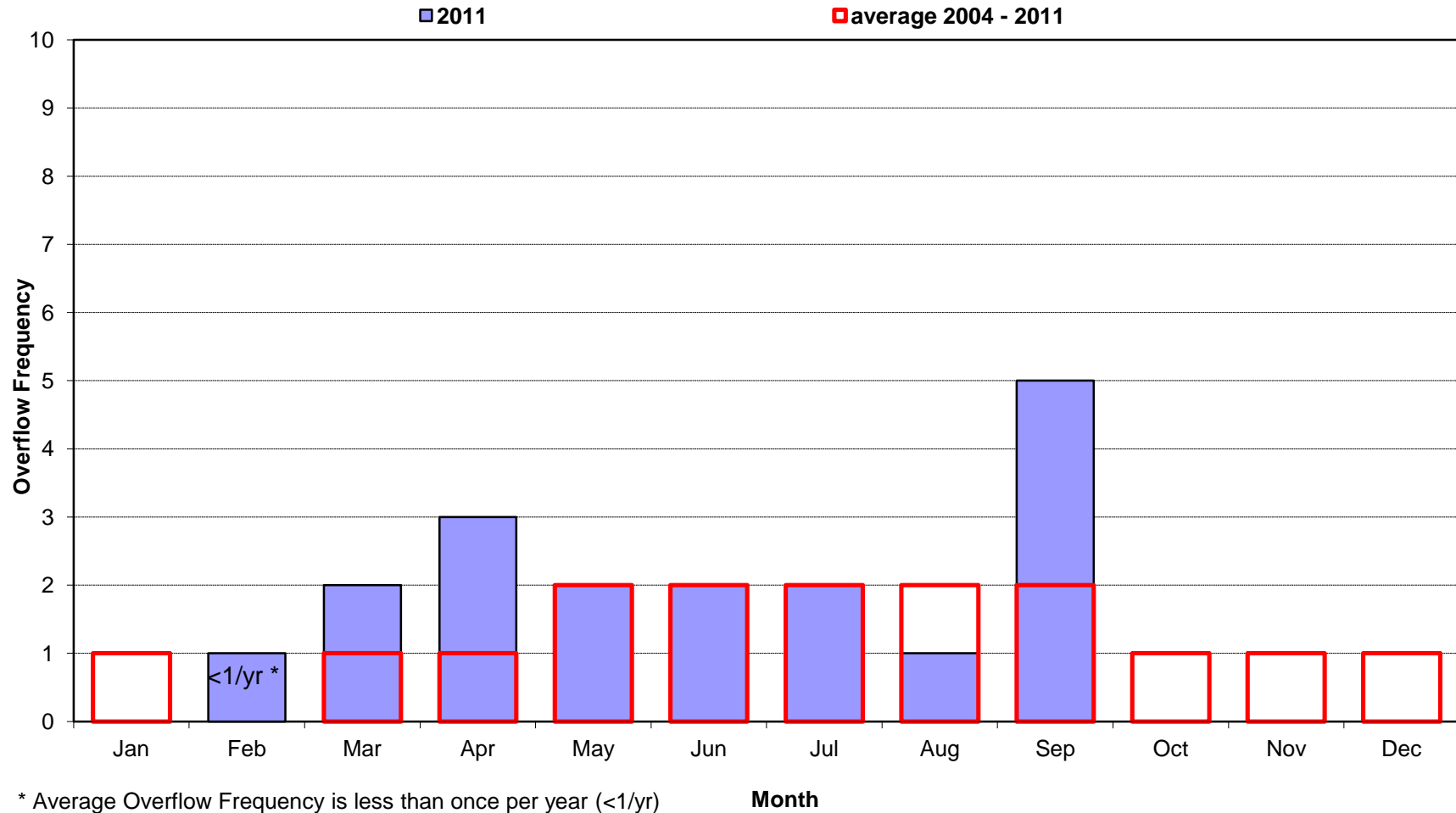
Date	Num of Overflows	Storm ⁽¹⁾ Total (in.)	Hours of Rainfall	Maximum Storm Intensity (in./hr.)	Volume of Overflow (MG)	Duration of Overflow (hrs.)
9/1/11						
9/2/11						
9/3/11						
9/4/11						
9/5/11						
9/6/11		4.78	45	1.09	none	none
9/7/11	2				5.02	9
9/8/11	1	1.28	2	1.10	0.76	3
9/9/11						
9/10/11						
9/11/11						
9/12/11						
9/13/11						
9/14/11						
9/15/11						
9/16/11						
9/17/11		0.04	2	0.03	none	none
9/18/11						
9/19/11						
9/20/11						
9/21/11	1	0.67	6	0.64	0.11	2
9/22/11						
9/23/11		0.47	15	0.15	none	none
9/24/11		0.03	2	0.02	none	none
9/25/11						
9/26/11						
9/27/11	1	1.57	8	1.01	0.46	6
9/28/11		0.08	1	0.08	none	none
9/29/11						
9/30/11		0.03	1	0.03	none	none

MONTH SUMMARY

Num of Overflows	Total Rain	Total Hours	Max Intensity	Total Volume	Total Duration
5	8.95	82	1.10	6.35	20

(1) Storm Total (in) data from National Weather Service, Wakefield Office, Richmond International Airport.

City of Richmond, Virginia
Overflow Frequency by Month
CSO28 - W'Burg Road 2004-2011



CSO31 - Oakwood Cem
Rainfall and Overflow Model Summary
Current Month: September 2011

Date	Num of Overflows	Storm ⁽¹⁾ Total (in.)	Hours of Rainfall	Maximum Storm Intensity (in./hr.)	Volume of Overflow (MG)	Duration of Overflow (hrs.)
9/1/11						
9/2/11						
9/3/11						
9/4/11						
9/5/11						
9/6/11		4.78	45	1.09	none	none
9/7/11	2				2.95	6
9/8/11	1	1.28	2	1.10	0.67	2
9/9/11						
9/10/11						
9/11/11						
9/12/11						
9/13/11						
9/14/11						
9/15/11						
9/16/11						
9/17/11		0.04	2	0.03	none	none
9/18/11						
9/19/11						
9/20/11						
9/21/11	1	0.67	6	0.64	0.08	2
9/22/11						
9/23/11		0.47	15	0.15	none	none
9/24/11		0.03	2	0.02	none	none
9/25/11						
9/26/11						
9/27/11	1	1.57	8	1.01	0.57	2
9/28/11		0.08	1	0.08	none	none
9/29/11						
9/30/11		0.03	1	0.03	none	none

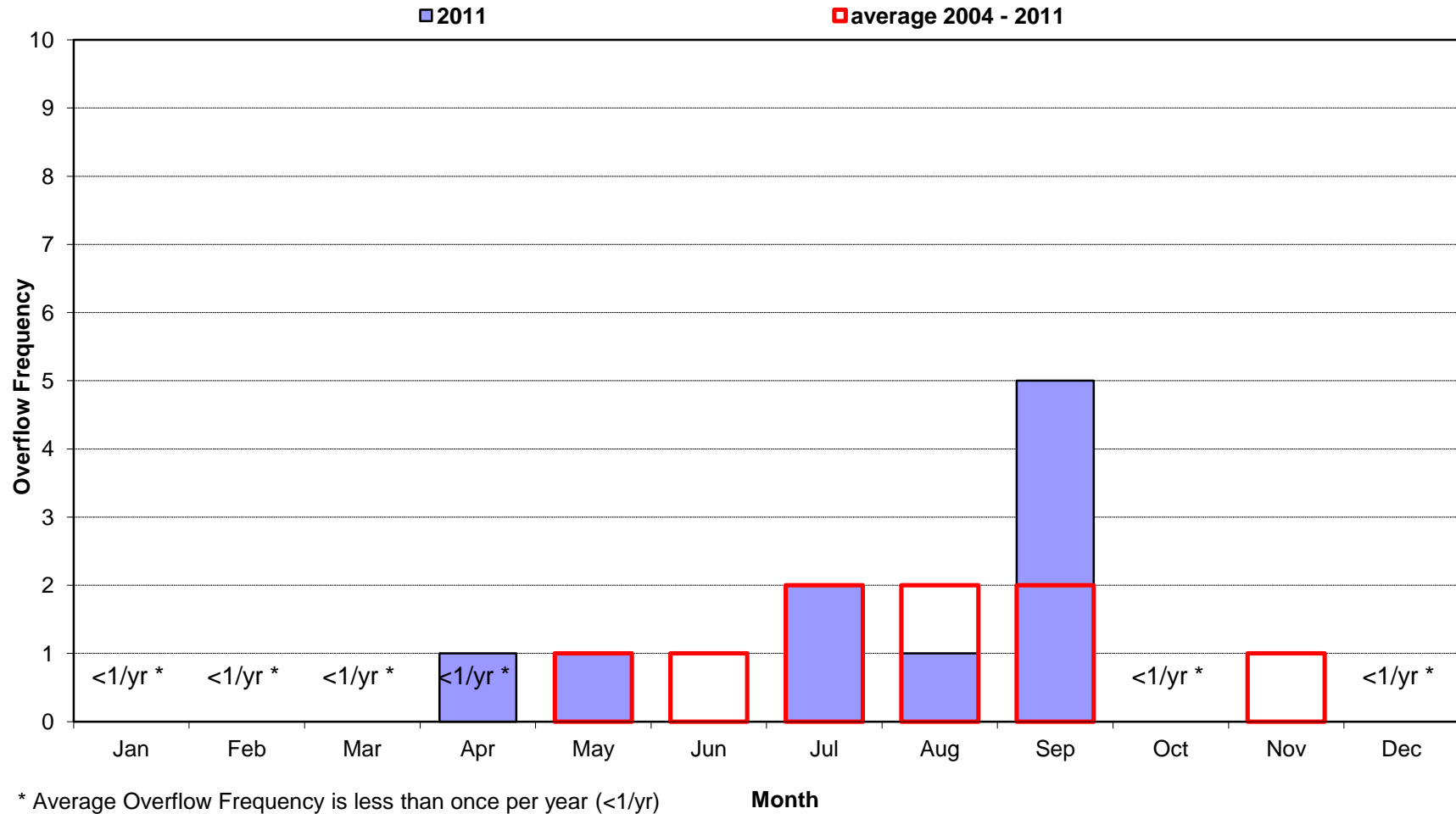
MONTH SUMMARY

Num of Overflows	Total Rain	Total Hours	Max Intensity	Total Volume	Total Duration
5	8.95	82	1.10	4.27	12

(1) Storm Total (in) data from National Weather Service, Wakefield Office, Richmond International Airport.

City of Richmond, Virginia
Overflow Frequency by Month

CSO31 - Oakwood Cem 2004-2011



CSO33 - Shields Lake

Rainfall and Overflow Model Summary

Current Month: September 2011

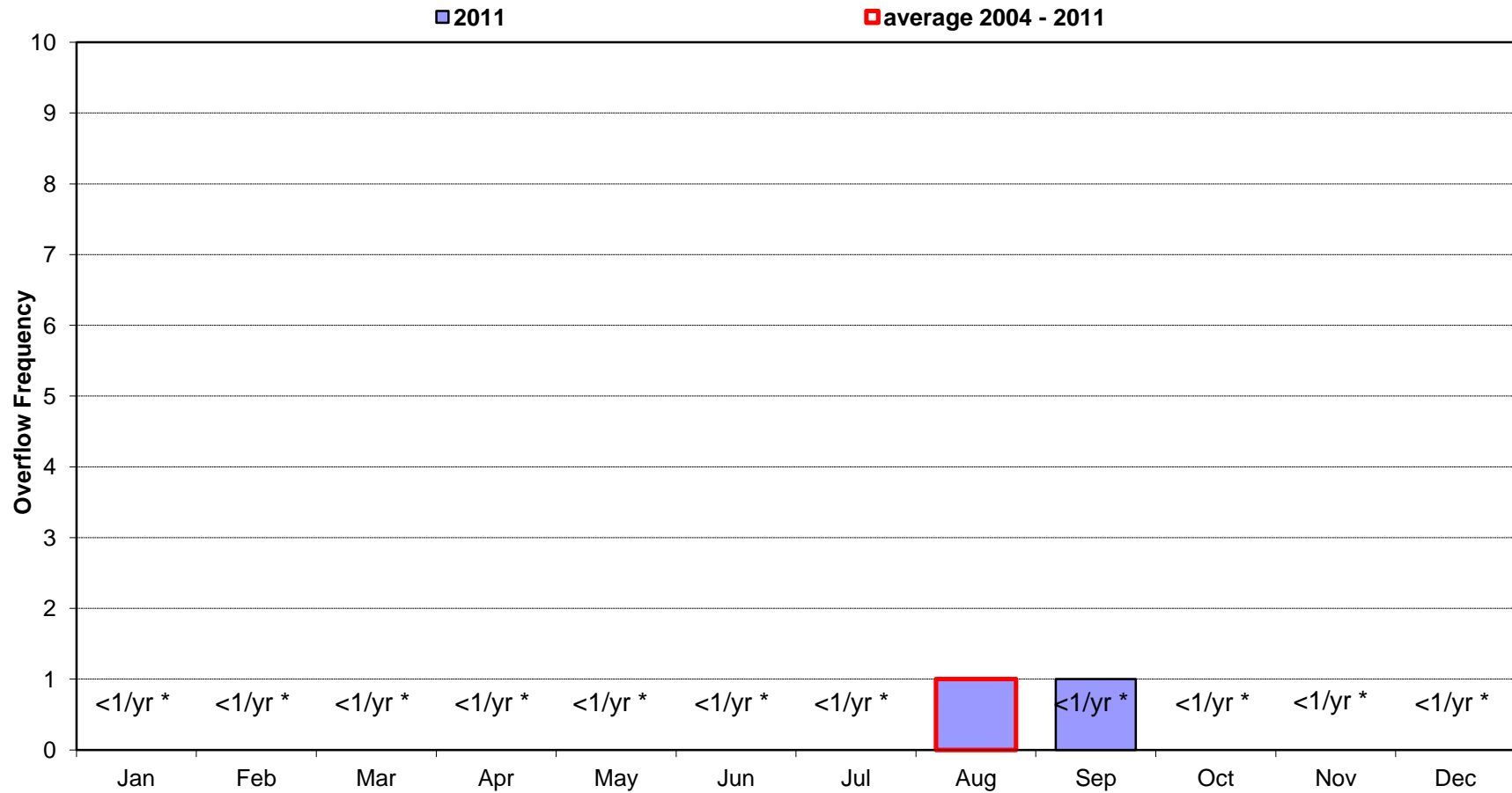
Date	Num of Overflows	Storm ⁽¹⁾ Total (in.)	Hours of Rainfall	Maximum Storm Intensity (in./hr.)	Volume of Overflow (MG)	Duration of Overflow (hrs.)
9/1/11						
9/2/11						
9/3/11						
9/4/11						
9/5/11						
9/6/11		4.78	45	1.09	none	none
9/7/11	1				0.70	2
9/8/11		1.28	2	1.10	none	none
9/9/11						
9/10/11						
9/11/11						
9/12/11						
9/13/11						
9/14/11						
9/15/11						
9/16/11						
9/17/11		0.04	2	0.03	none	none
9/18/11						
9/19/11						
9/20/11						
9/21/11		0.67	6	0.64	none	none
9/22/11						
9/23/11		0.47	15	0.15	none	none
9/24/11		0.03	2	0.02	none	none
9/25/11						
9/26/11						
9/27/11		1.57	8	1.01	none	none
9/28/11		0.08	1	0.08	none	none
9/29/11						
9/30/11		0.03	1	0.03	none	none

MONTH SUMMARY

Num of Overflows	Total Rain	Total Hours	Max Intensity	Total Volume	Total Duration
1	8.95	82	1.10	0.70	2

(1) Storm Total (in) data from National Weather Service, Wakefield Office, Richmond International Airport.

City of Richmond, Virginia
Overflow Frequency by Month
CSO33 - Shields Lake 2004-2011



* Average Overflow Frequency is less than once per year (<1/yr)

Month

CSO34 - 19th & Dock

Rainfall and Overflow Model Summary

Current Month: September 2011

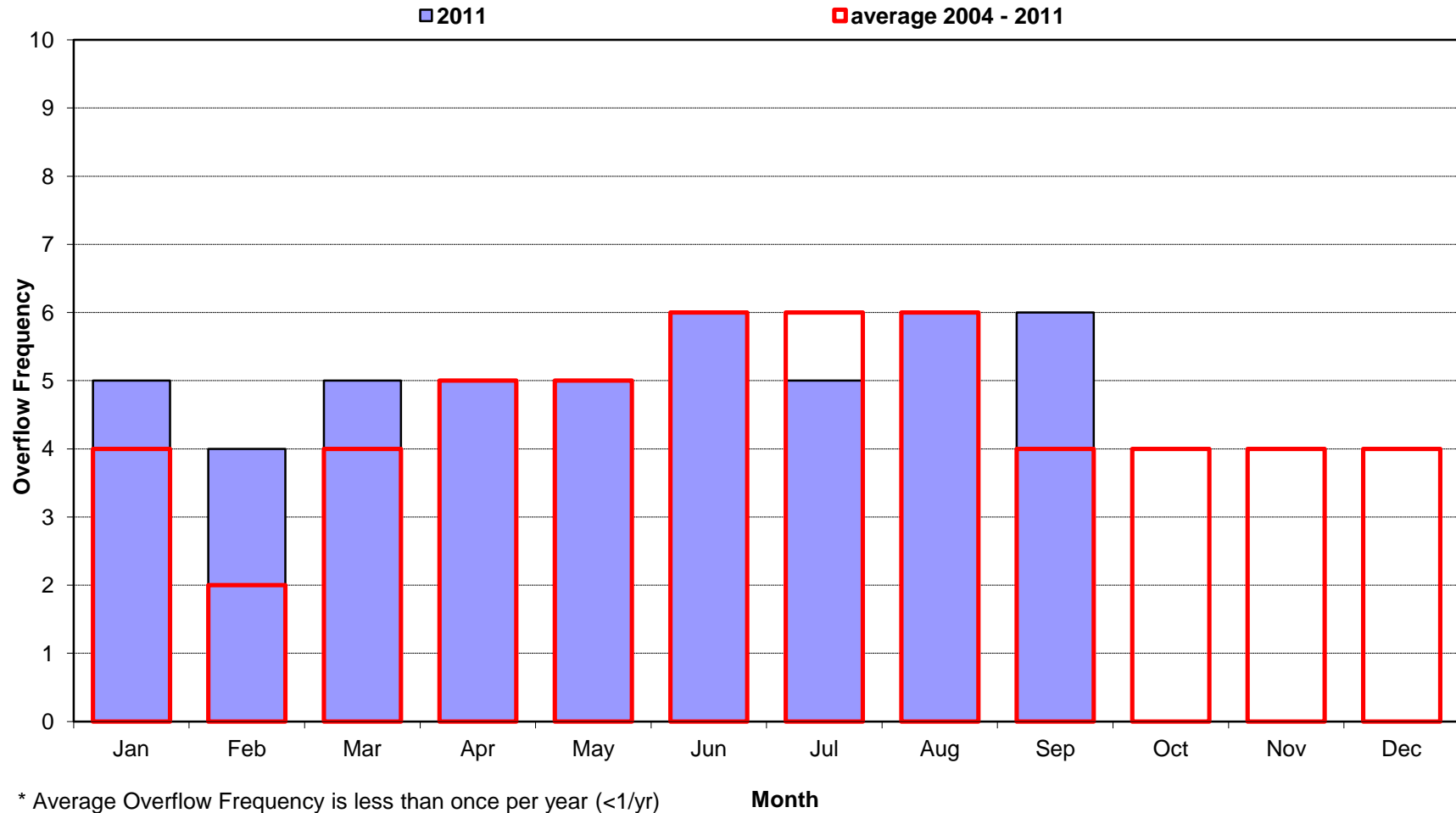
Date	Num of Overflows	Storm ⁽¹⁾ Total (in.)	Hours of Rainfall	Maximum Storm Intensity (in./hr.)	Volume of Overflow (MG)	Duration of Overflow (hrs.)
9/1/11						
9/2/11						
9/3/11						
9/4/11						
9/5/11						
9/6/11	1	4.78	45	1.09	1.00	15
9/7/11	1				9.10	21
9/8/11	1	1.28	2	1.10	3.42	3
9/9/11						
9/10/11						
9/11/11						
9/12/11						
9/13/11						
9/14/11						
9/15/11						
9/16/11						
9/17/11		0.04	2	0.03	none	none
9/18/11						
9/19/11						
9/20/11						
9/21/11	1	0.67	6	0.64	1.50	2
9/22/11						
9/23/11	1	0.47	15	0.15	0.14	5
9/24/11		0.03	2	0.02	none	none
9/25/11						
9/26/11						
9/27/11	1	1.57	8	1.01	3.83	8
9/28/11		0.08	1	0.08	none	none
9/29/11						
9/30/11		0.03	1	0.03	none	none

MONTH SUMMARY

Num of Overflows	Total Rain	Total Hours	Max Intensity	Total Volume	Total Duration
6	8.95	82	1.10	19.00	54

(1) Storm Total (in) data from National Weather Service, Wakefield Office, Richmond International Airport.

City of Richmond, Virginia
Overflow Frequency by Month
CSO34 - 19th & Dock 2004-2011



CSO35 - 29th & Dock

Rainfall and Overflow Model Summary

Current Month: September 2011

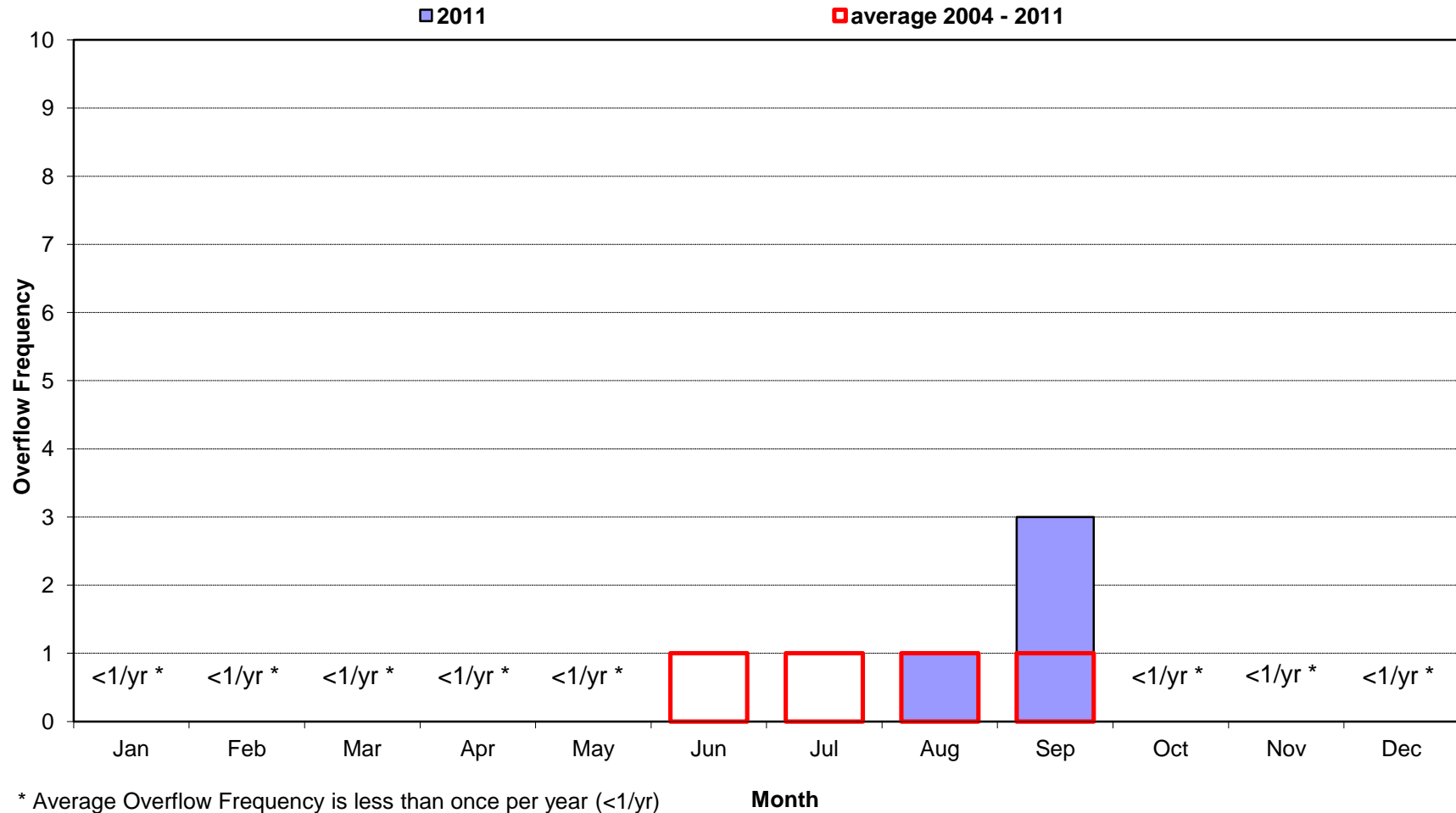
Date	Num of Overflows	Storm ⁽¹⁾ Total (in.)	Hours of Rainfall	Maximum Storm Intensity (in./hr.)	Volume of Overflow (MG)	Duration of Overflow (hrs.)
9/1/11						
9/2/11						
9/3/11						
9/4/11						
9/5/11						
9/6/11		4.78	45	1.09	none	none
9/7/11	1				0.10	2
9/8/11	1	1.28	2	1.10	0.02	2
9/9/11						
9/10/11						
9/11/11						
9/12/11						
9/13/11						
9/14/11						
9/15/11						
9/16/11						
9/17/11		0.04	2	0.03	none	none
9/18/11						
9/19/11						
9/20/11						
9/21/11		0.67	6	0.64	none	none
9/22/11						
9/23/11		0.47	15	0.15	none	none
9/24/11		0.03	2	0.02	none	none
9/25/11						
9/26/11						
9/27/11	1	1.57	8	1.01	0.02	2
9/28/11		0.08	1	0.08	none	none
9/29/11						
9/30/11		0.03	1	0.03	none	none

MONTH SUMMARY

Num of Overflows	Total Rain	Total Hours	Max Intensity	Total Volume	Total Duration
3	8.95	82	1.10	0.13	6

(1) Storm Total (in) data from National Weather Service, Wakefield Office, Richmond International Airport.

City of Richmond, Virginia
Overflow Frequency by Month
CSO35 - 29th & Dock 2004-2011



CSO39 - Gov't Road & Gillies
Rainfall and Overflow Model Summary
Current Month: September 2011

Date	Num of Overflows	Storm ⁽¹⁾ Total (in.)	Hours of Rainfall	Maximum Storm Intensity (in./hr.)	Volume of Overflow (MG)	Duration of Overflow (hrs.)
9/1/11						
9/2/11						
9/3/11						
9/4/11						
9/5/11						
9/6/11	1	4.78	45	1.09	0.37	15
9/7/11	1				3.84	21
9/8/11	1	1.28	2	1.10	1.39	4
9/9/11						
9/10/11						
9/11/11						
9/12/11						
9/13/11						
9/14/11						
9/15/11						
9/16/11						
9/17/11		0.04	2	0.03	none	none
9/18/11						
9/19/11						
9/20/11						
9/21/11	1	0.67	6	0.64	0.61	2
9/22/11						
9/23/11	1	0.47	15	0.15	0.04	2
9/24/11		0.03	2	0.02	none	none
9/25/11						
9/26/11						
9/27/11	1	1.57	8	1.01	1.57	9
9/28/11		0.08	1	0.08	none	none
9/29/11						
9/30/11		0.03	1	0.03	none	none

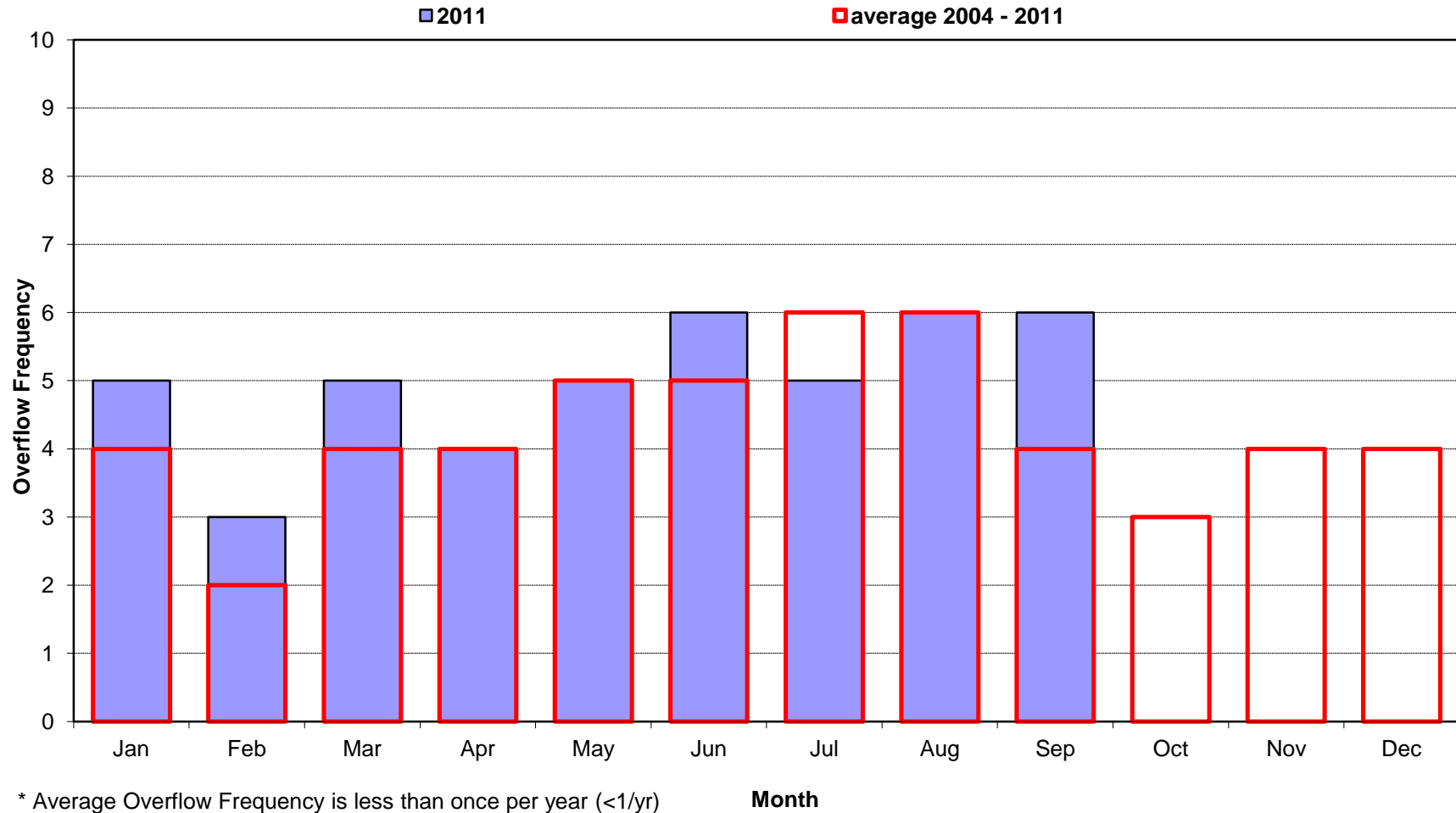
MONTH SUMMARY

Num of Overflows	Total Rain	Total Hours	Max Intensity	Total Volume	Total Duration
6	8.95	82	1.10	7.83	53

(1) Storm Total (in) data from National Weather Service, Wakefield Office, Richmond International Airport.

City of Richmond, Virginia
Overflow Frequency by Month

CSO39 - Gov't Road & Gillies 2004-2011



CSO40 - Diff User

Rainfall and Overflow Model Summary

Current Month: September 2011

Date	Num of Overflows	Storm ⁽¹⁾ Total (in.)	Hours of Rainfall	Maximum Storm Intensity (in./hr.)	Volume of Overflow (MG)	Duration of Overflow (hrs.)
9/1/11						
9/2/11						
9/3/11						
9/4/11						
9/5/11						
9/6/11	1	4.78	45	1.09	2.37	17
9/7/11	1				24.02	23
9/8/11	1	1.28	2	1.10	8.20	5
9/9/11						
9/10/11						
9/11/11						
9/12/11						
9/13/11						
9/14/11						
9/15/11						
9/16/11						
9/17/11		0.04	2	0.03	none	none
9/18/11						
9/19/11						
9/20/11						
9/21/11	1	0.67	6	0.64	3.05	4
9/22/11						
9/23/11	1	0.47	15	0.15	0.34	5
9/24/11		0.03	2	0.02	none	none
9/25/11						
9/26/11						
9/27/11	1	1.57	8	1.01	8.18	9
9/28/11		0.08	1	0.08	none	none
9/29/11						
9/30/11		0.03	1	0.03	none	none

MONTH SUMMARY

Num of Overflows	Total Rain	Total Hours	Max Intensity	Total Volume	Total Duration
6	8.95	82	1.10	46.17	63

(1) Storm Total (in) data from National Weather Service, Wakefield Office, Richmond International Airport.

City of Richmond, Virginia
Overflow Frequency by Month
CSO40 - Diff User 2004-2011

