



**City of Richmond**

# When it Rains – it Pours Why we need a Stormwater Utility

Bob Steidel - Deputy Director, DPU

Chris Beschler – Director, DPU



# Understanding Stormwater

---

## What is Stormwater?

Precipitation from rain/melting snow that DOES NOT soak into the ground. Impervious surfaces like driveways, parking lots, roads and roofs prevent stormwater from soaking in.

## Stormwater Issues:

- Flooding
- Pollution
- Poor Water Quality
- Soil Erosion





# Understanding Stormwater

---

## Where does it go?

Stormwater travels to the James River through...

35,000 catch basins

370 stormwater outfalls

200 private BMP's (example: retention pond)

50 public BMP's

608 miles of drainage ditches

178 miles of storm sewers

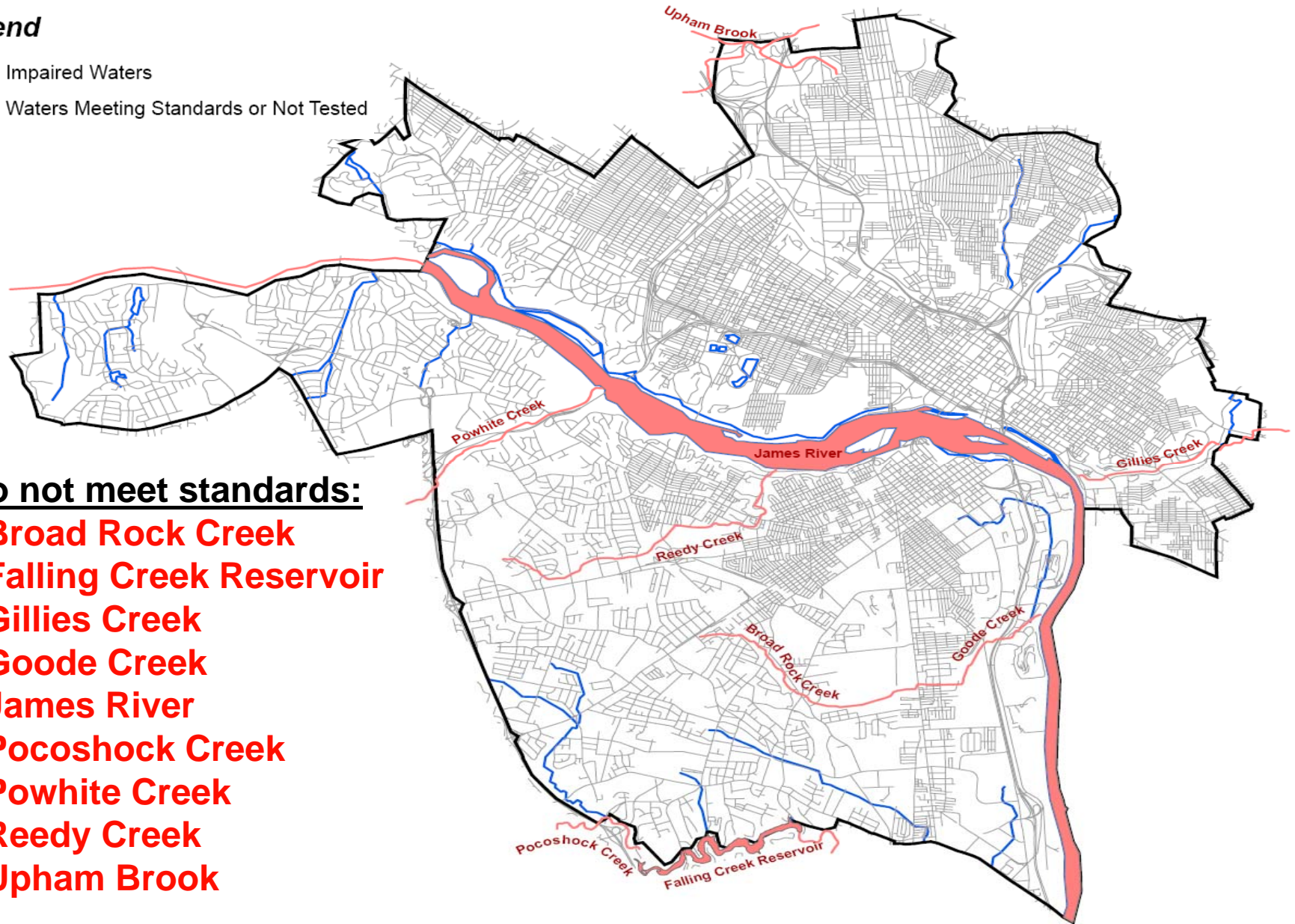
6.5 miles of polluted creeks and streams



# Understanding Stormwater Richmond's Polluted Waters

## Legend

- Impaired Waters
- Waters Meeting Standards or Not Tested



## Do not meet standards:

- Broad Rock Creek
- Falling Creek Reservoir
- Gillies Creek
- Goode Creek
- James River
- Pocoshock Creek
- Powhite Creek
- Reedy Creek
- Upham Brook



# Understanding Stormwater

---

What is the law?

We have to reduce/improve both

Quantity of Stormwater

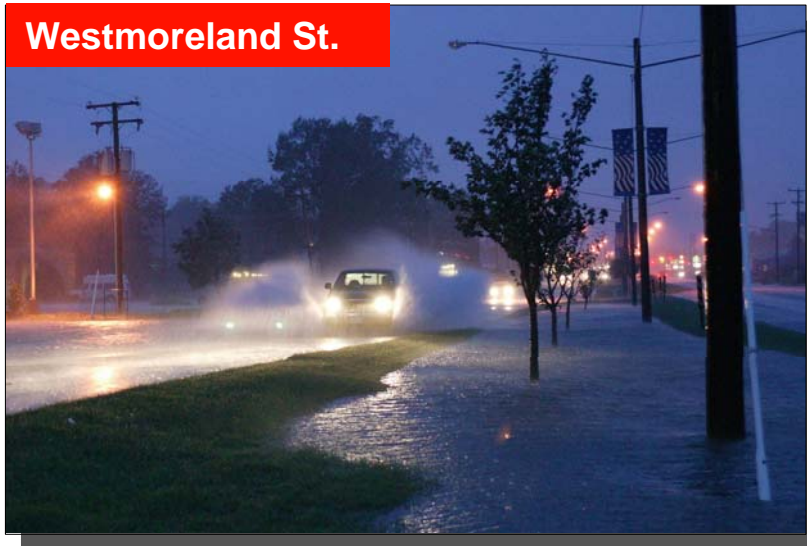
Quality of Stormwater





# Understanding Stormwater: Management Goals

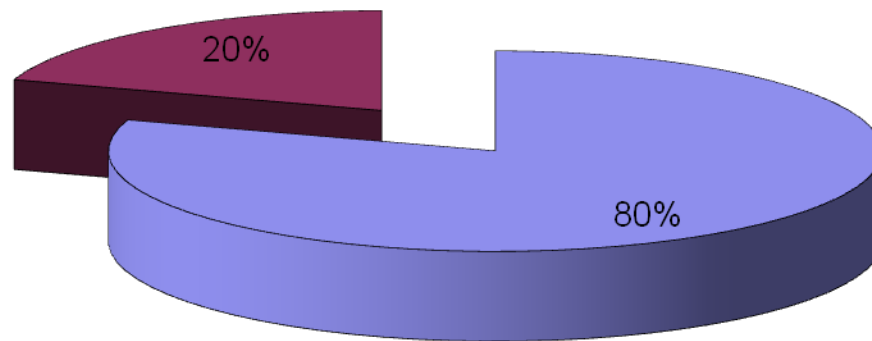
- Protect public and environmental health
- Protect residential, commercial, industrial & public properties
- Improve and protect public safety and mobility
- Improve economic opportunities with better drainage





# Understanding Stormwater: Pollution Sources

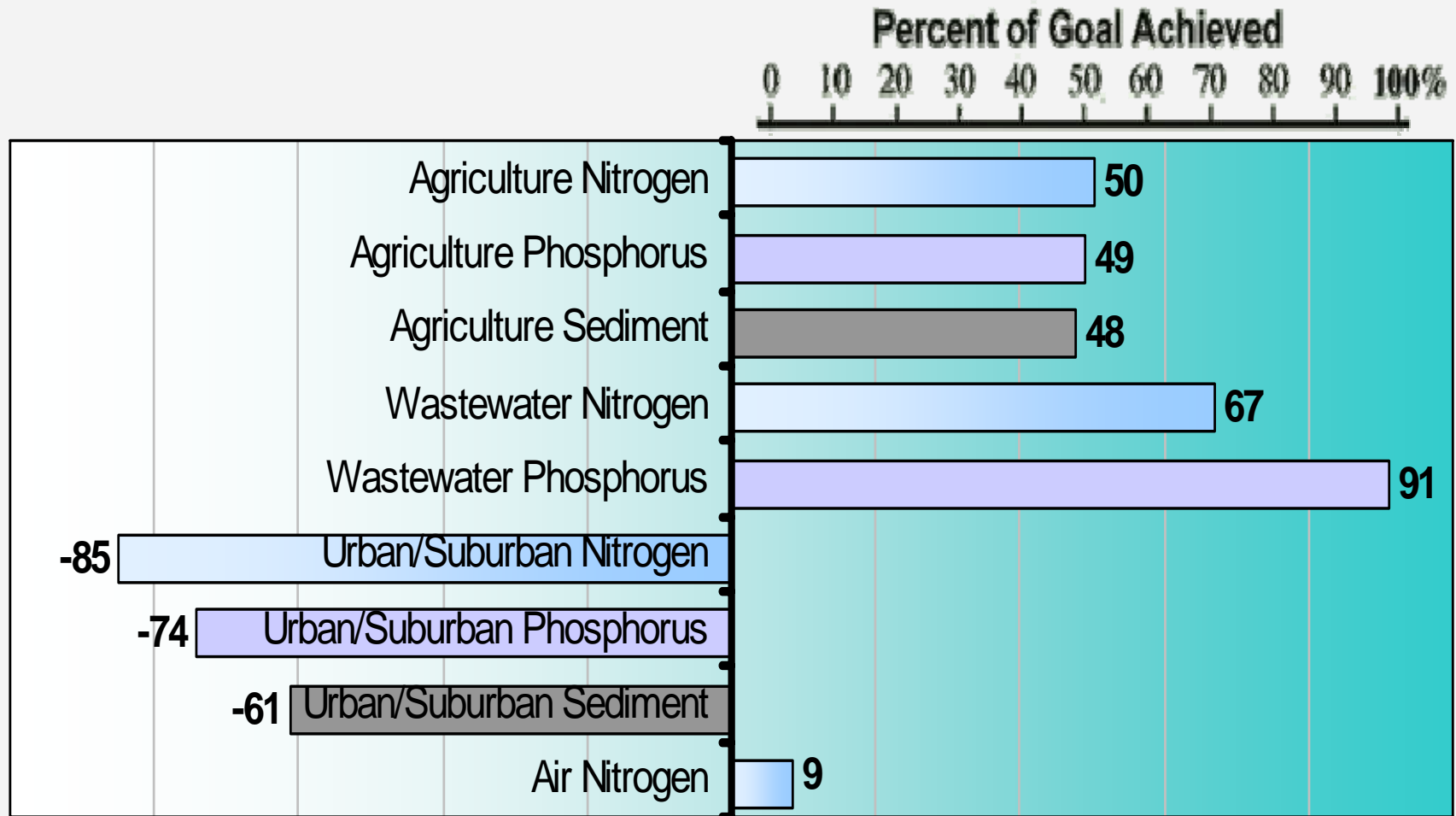
- Contributors to Chesapeake Bay Pollution



■ Agriculture & Stormwater Runoff  
■ Wastewater Treatment Plants and Industry



# Understanding Stormwater - Pollution Reduction Progress in the Chesapeake Bay Watershed

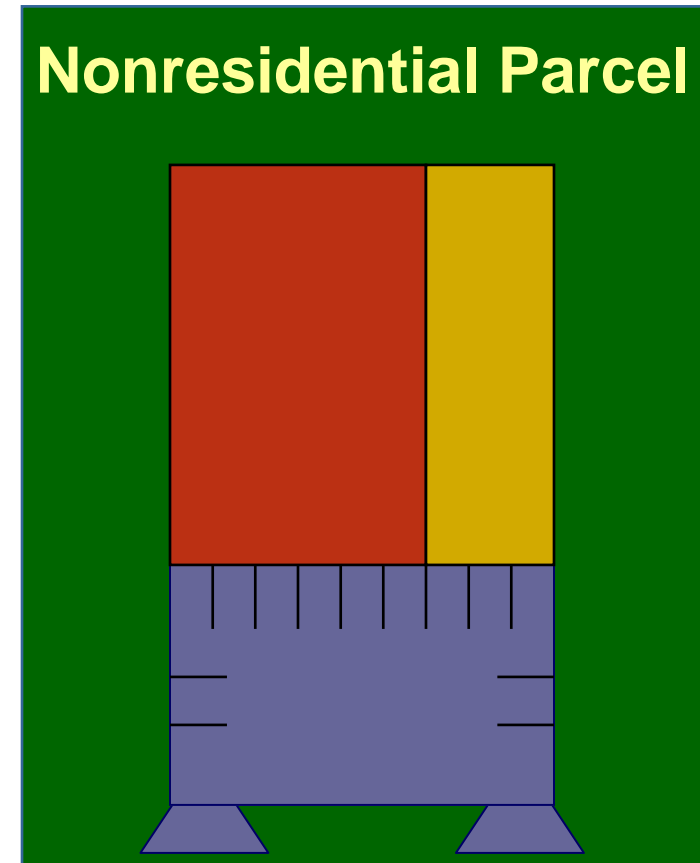


Data and Methods: [www.chesapeakebay.net/status\\_reducingpollution.aspx](http://www.chesapeakebay.net/status_reducingpollution.aspx)



# Understanding Stormwater Billing Unit Calculation

<b>Building Area</b>	10,000Ft <sup>2</sup>
<b>Parking</b>	3,250 Ft <sup>2</sup>
<b>Other Impervious Area</b>	1,000 Ft <sup>2</sup>
<b>Total</b>	14,250 Ft <sup>2</sup>



$$14,250 = 10 \text{ ERUs}$$

*1 Equivalent Residential Unit = 1,425 sq. ft*



# Understanding Stormwater Rates by Customer Category

We have a three tiered rate structure for single family residential (SFR) parcels based on the amount of impervious surface area :

Rates per SFR (*Impervious sq. ft*)

	<u>Annual Rates</u>	<u># Customers</u>
1,000 sq. ft. or less	\$25	7,906
1,001-2,399 sq. ft.	\$45	32,449
2,400 sq. ft. or more	\$70	7,609

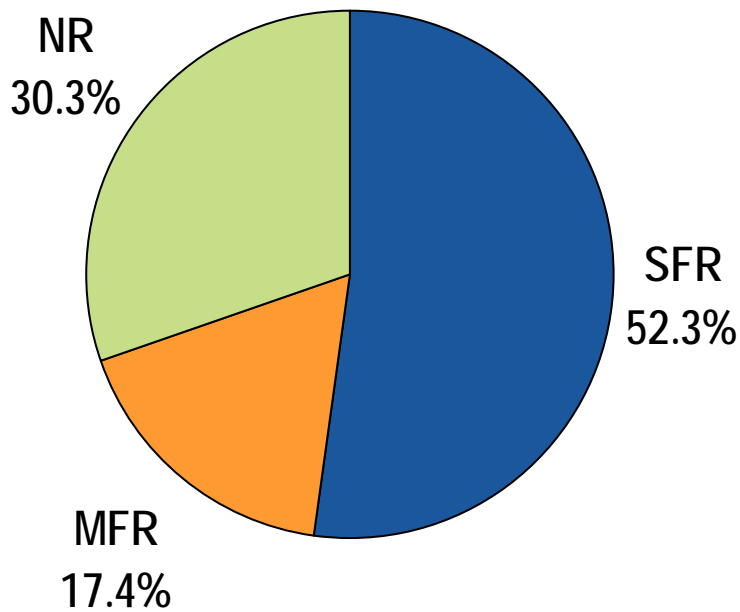
Non-residential properties are charged **per # of Equivalent Residential Units (ERU's)**. One ERU = 1,425 sq. ft.

Rates per ERU (*1 ERU =1,425 sq. ft*)

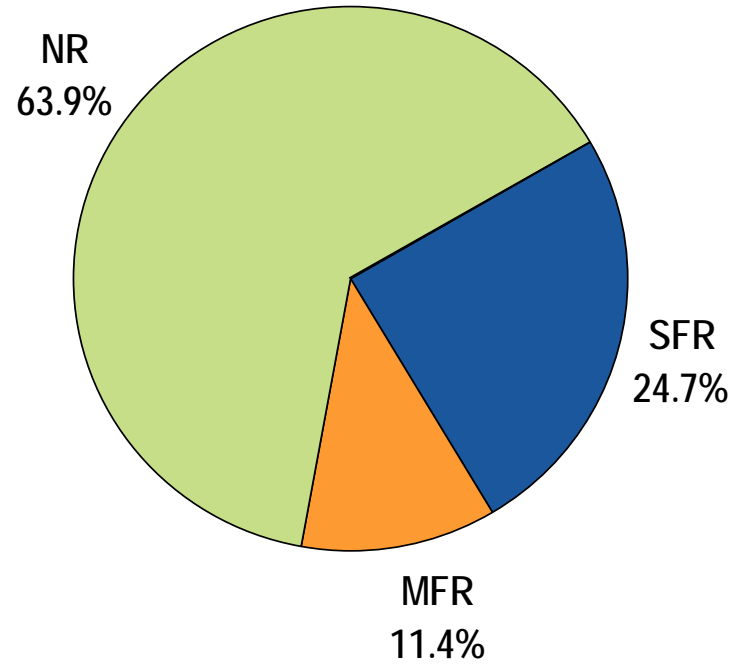
	<u>Annual Rates</u>	<u># Customers</u>
Multi-family Residential	\$45	11,220
Non-Residential ( <i>includes commercial, industrial, non-profits, churches</i> )	\$45	8,878



# Understanding Stormwater Taxes vs. Fees



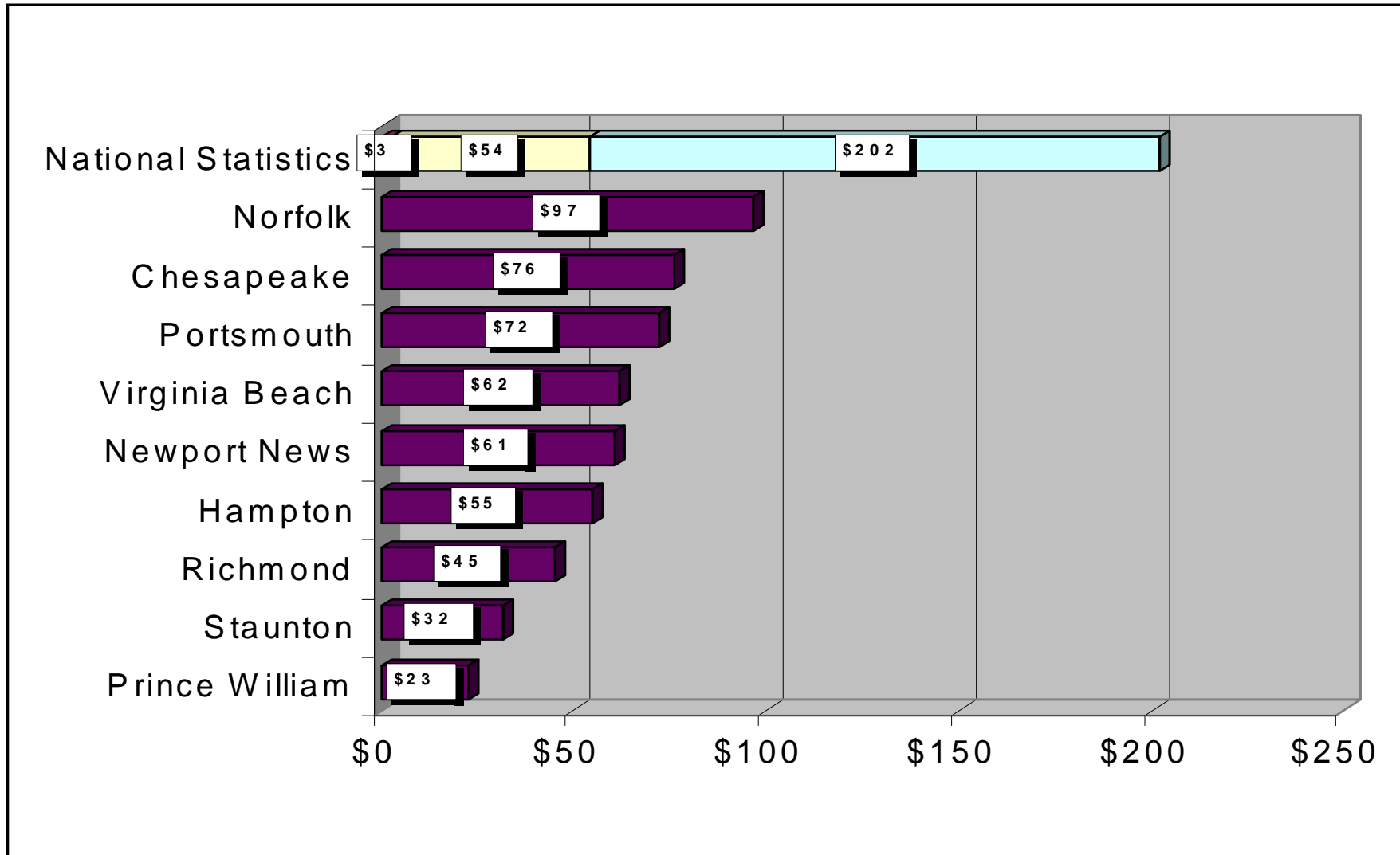
**Real Estate Taxes**



**Stormwater Utility Fees**



# Understanding Stormwater Fee Comparison to other localities



National Statistics Based on Survey of 70 Facilities (B&V, 2007)



# Understanding Stormwater Exemptions and Credits

- Non-residential properties are eligible for partial credits that meet defined criteria

Property Category	Onsite Facilities to Control Quantity	Low Impact Development (LID)	Participation in Pollution Prevention and/or Lawn Care Program	Maximum Allowable Credit
Non –Residential <i>(includes commercial, industrial, non-profit, churches)</i>	Up to 20%	Up to 20%	Up to 20%	50%





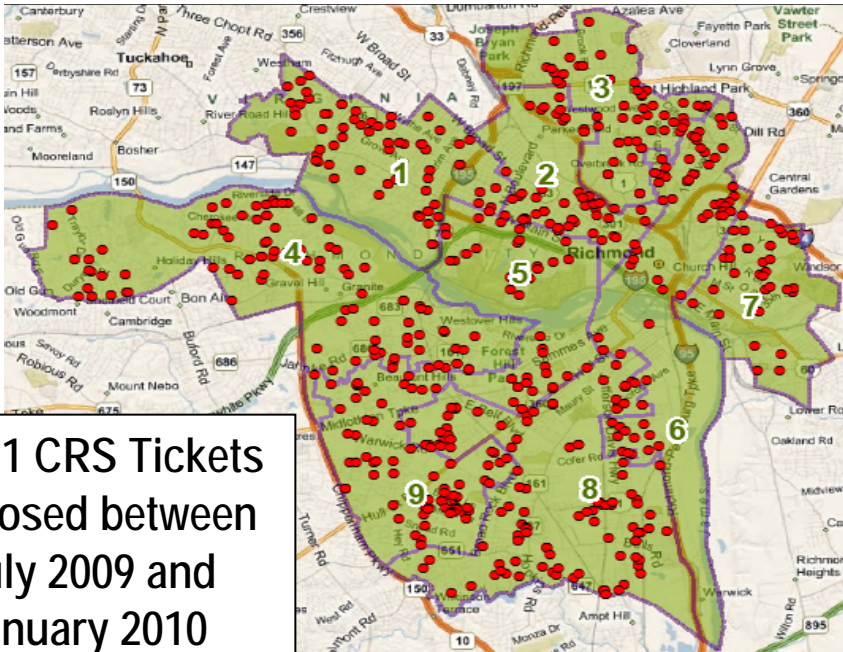
# Understanding Stormwater Payment Options

---

- How to pay
  - Mail in payment
  - Pay by credit card on City website
  - Pay in person at City Hall and East District Initiative
- Payment Assistance
  - Call 644-3000
  - Customized payment plan to fit your needs



# Understanding Stormwater Completed Maintenance Requests



611 CRS Tickets Closed between July 2009 and January 2010

Council District	# Closed Service Requests	Cost
1	70	\$240,830
2	55	\$192,195
3	55	\$182,595
4	95	\$329,355
5	41	\$130,269
6	67	\$220,703
7	37	\$122,633
8	119	\$405,571
9	72	\$247,048

**Total: \$2,071,199**