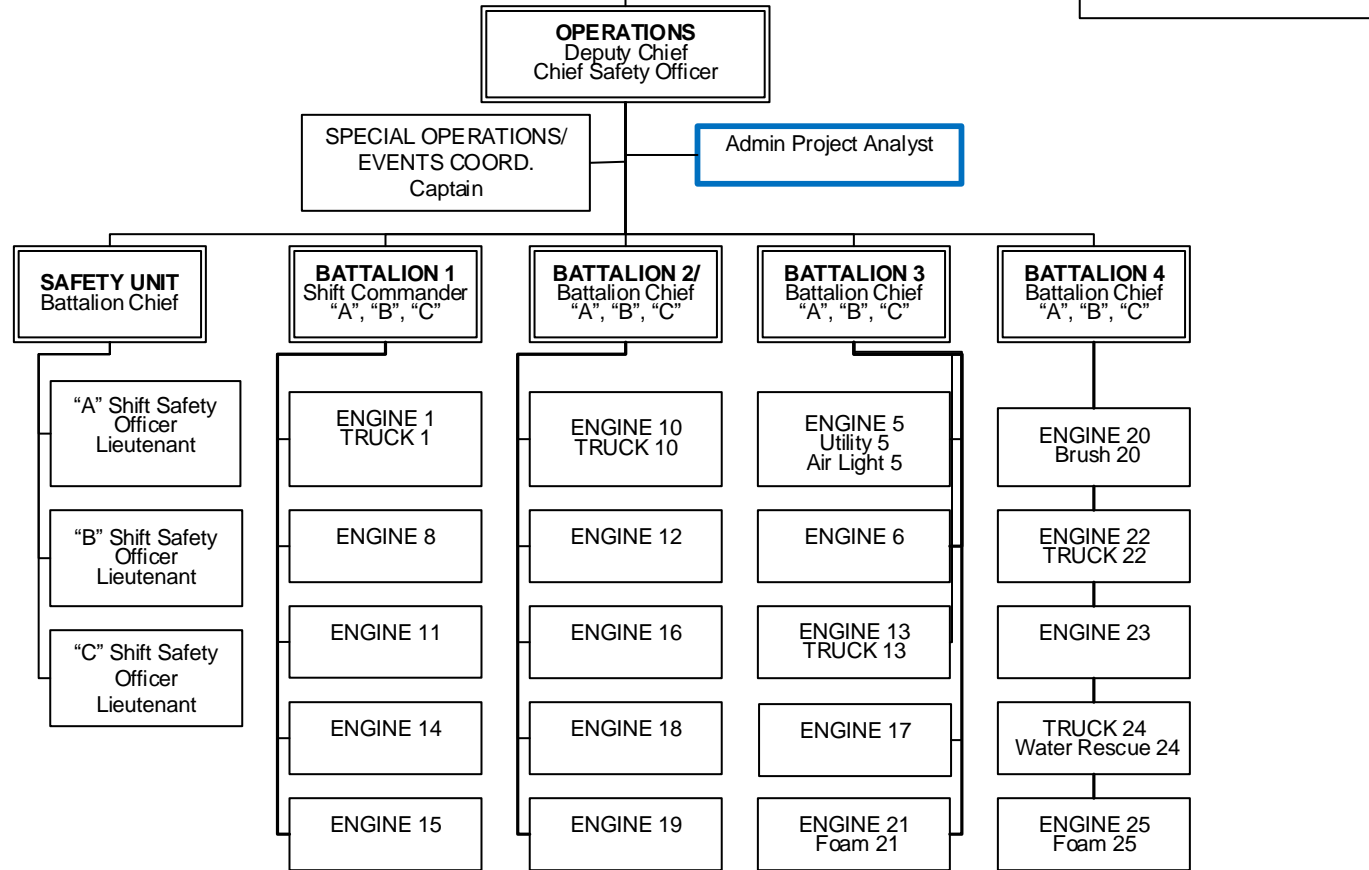
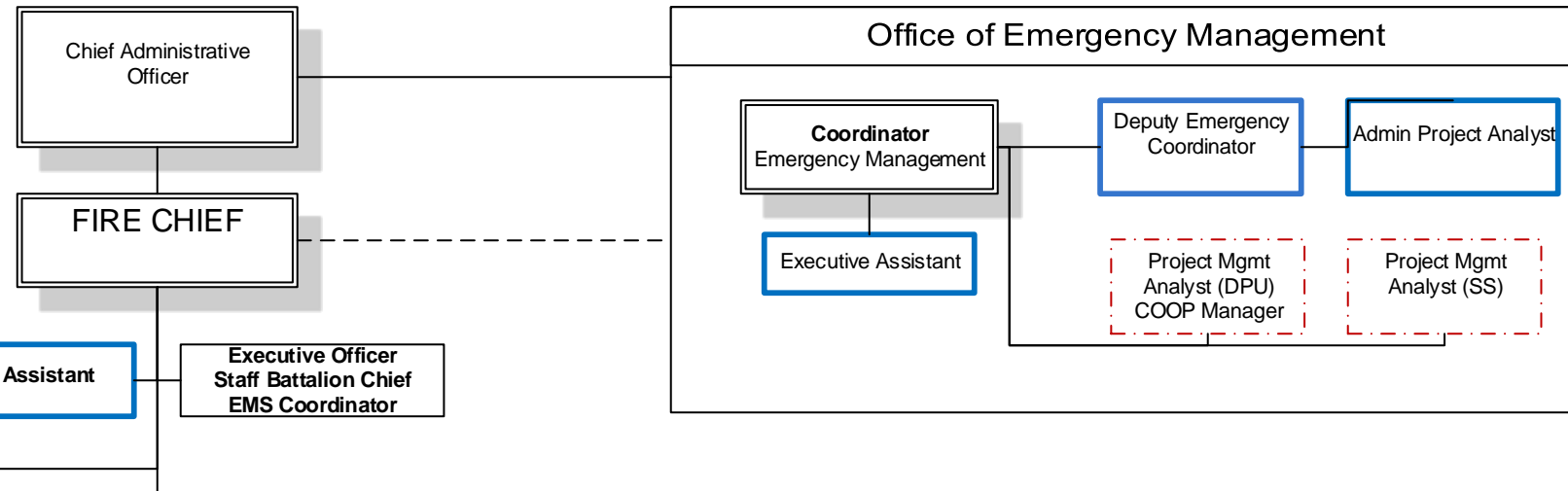




**Richmond Fire and Emergency Services**

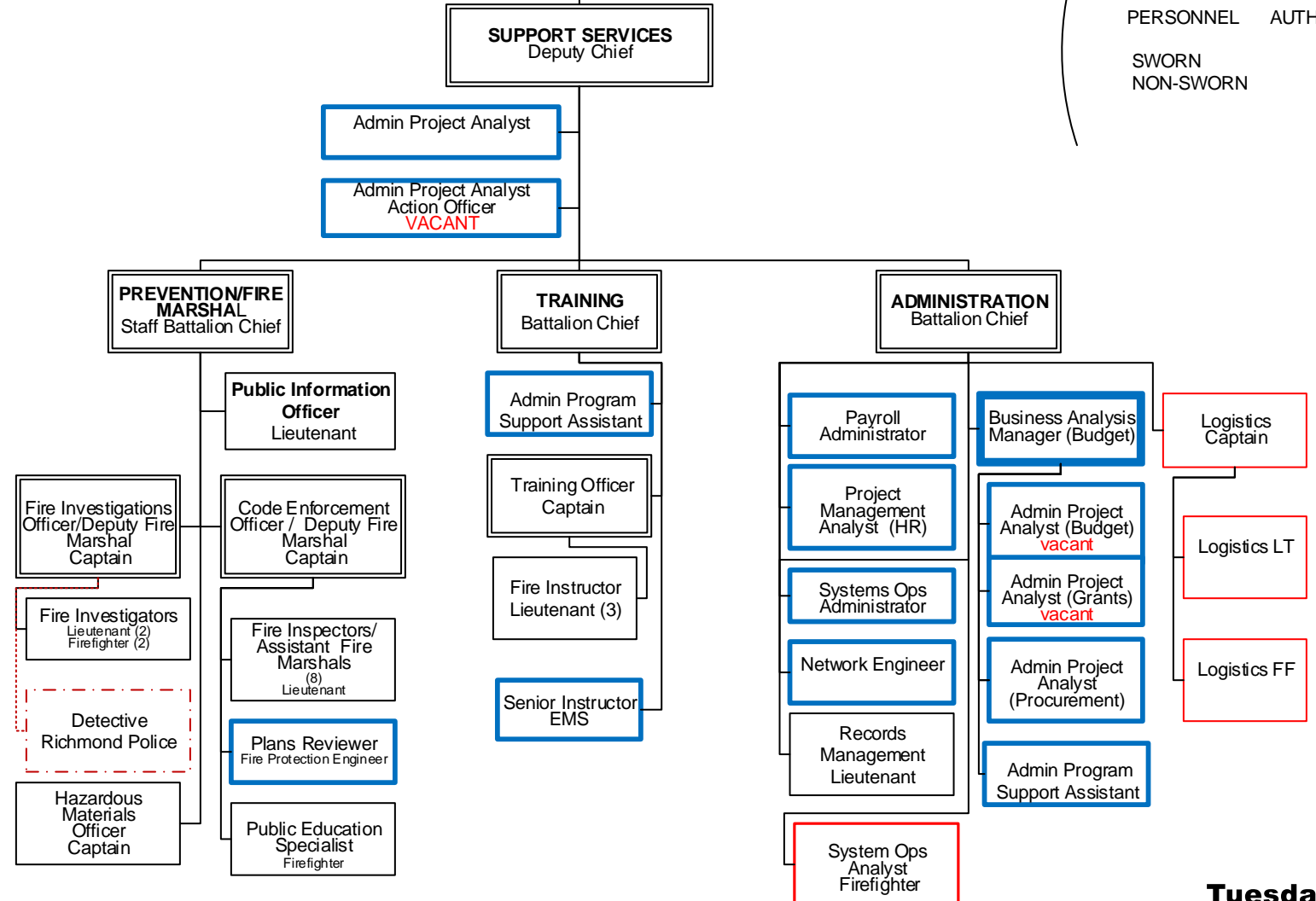
**MAR 2016**



Personnel in Solid Red are suppression personnel filling 40 hour assignments

Personnel in Blue are civilian/unsworn staff

Personnel in dashed red are funded by other departments



**AUTHORIZED/VACANT PERSONNEL TOTALS**

PERSONNEL	AUTHORIZED	VACANT
	433	13
SWORN	413	10
NON-SWORN	20	3