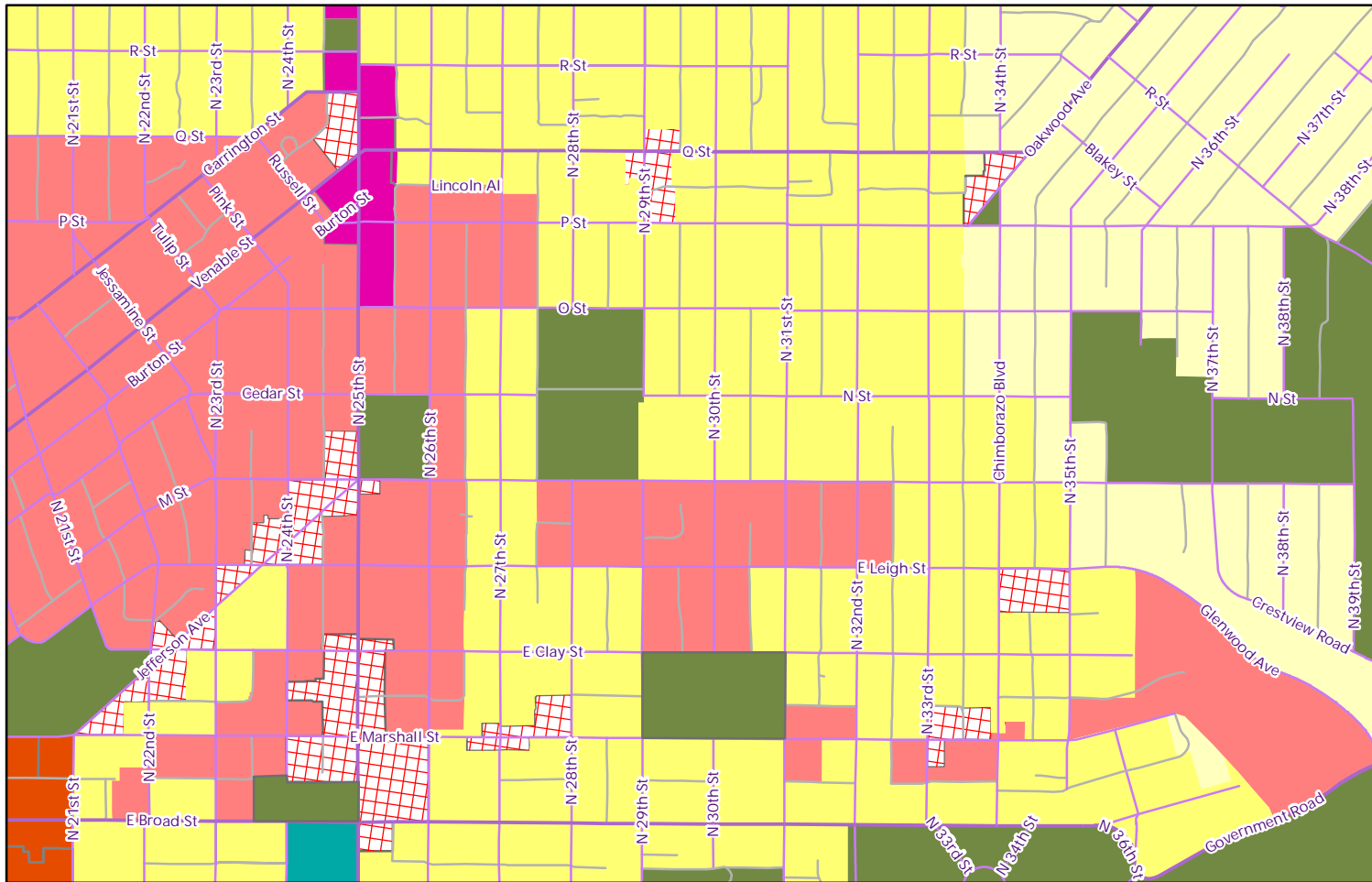


# Church Hill Neighborhood Master Plan Amendments



## Legend

- Single-Family (Low Density)
- Single-Family (Medium Density)
- Mixed Use Residential
- Neighborhood Commercial
- Mixed Use
- Downtown General Urban Area
- Institutional
- Public & Open Space



Department of Planning and Development Review  
 Division of Planning and Preservation  
 April 2010

